



Women's Studies Center
FLORIDA INTERNATIONAL UNIVERSITY

2010-2011 Annual Report

JUSTICE



&



EQUALITY



Table of Contents

Women's Studies Faculty & Staff Accomplishments

- 2 Director's Summary of Accomplishments
- 4 Women's Studies Staff Members
- 6 Women's Studies Faculty Achievements

Student Activities & Achievements

- 14 2010-2011 Graduates
- 15 Graduate Spotlight
- 16 Women's Studies Graduate Student Achievements
- 18 Scholarship & Award Recipients
- 19 Undergraduate Student Achievements & Internships
- 20 Women's Studies Alumni Accomplishments
- 22 Women's Studies Student Association (WSSA)
- 24 2011 Vagina Monologues
- 26 Women's Studies Graduate Student Association (WSGSA)
- 28 10th Annual Student Conference

WS Advisory Board & Fundraising Activities

- 30 Women's Studies Board of Advisors & Friends 2010-2011
- 33 Women's Studies Donors

Community Outreach & Extra-Curricular Activities

- 34 Fall 2010 Events
- 35 Women In Motion Exhibit at the Frost Museum
- 36 Spring 2011 Events
- 38 2011 Spring Gala

International Programs

- 40 Gender & Women's Studies Across Cultures International Co
- 41 GEMMA: Master's Degree in Women's and Gender Studies

Women's Studies Faculty

- 42 Women's Studies Core Faculty & Committees
- 43 Women's Studies Affiliated Faculty

Women's Studies Course Summaries

- 44 New Women's Studies Requirements
- 45 Queer Studies Certificate
- 46 2010-2011 Enrollment Summary

On the Cover...

Left: WSSA President and Vagina Monologues producer, Lupe Juarez, with Eve Ensler, author of *The Vagina Monologues*.

Top: WS intern, Maria "Muffy" Barbaran at Capitol Hill with Planned Parenthood supporters and Susannah Lindberg, Senator Scott Randolph's wife.

Bottom: Women's Studies faculty members at a welcoming reception for Lilly Ledbetter.

WOMEN'S STUDIES 2010-2011 ANNUAL REPORT

Layout & Design Christi M. Navarro

Contributing Editors Danielle Fox
Christi M. Navarro
Linda Smith

DIRECTOR'S SUMMARY OF ACCOMPLISHMENTS



By Laurie Shrage, Ph.D.

This past year, the Women's Studies Center co-sponsored events with FIU's African and African Diaspora Studies program, European Union Center, School of Music, Labor Center, The Frost and Wolfsonian Museums, the Religious Studies and Theatre departments, and Miami's AAUW chapter, Save Dade, International Visitors Bureau, and our own WS graduate and undergraduate student organizations (WSSA and WSGSA). One of the most memorable events was a campus lecture by Lilly Ledbetter (the inspiration behind the national "Lilly Ledbetter Fair Pay Act"). We were also fortunate to have visiting lecturers by author Arliss Ryan, Professors Ursula Goodenough, Emek Ucarer, Pasquale Tridico, Maria Zarzycka, and Maria Luisa Ortega Hernandez. At the WS Gala this year, FIU's alumna Alexandra Marie gave a wonderful concert of music by Latin American women composers. WSGSA organized an impressive conference in the fall, showcasing the work of graduate students across the campus on topics related to our program. WSSA produced another amazing performance of the Vagina Monologues, and raised money to help victims of sexual assault.

One of the big highlights of the past year for me was co-curating, with my colleagues Dionne Stephens (Psychology) and Jon Mogul (The

Wolfsonian), a teaching gallery at The Frost Museum using materials from the collection of The Wolfsonian Museum. Our exhibit, titled "Women in Motion: Fitness, Sport, and the Female Figure" examined visual strategies for representing active, athletic, and competitive women. We organized a number of panels in conjunction with the exhibit, with the expert help of Professor Cecile Houry (Honors College). Prof. Houry will teach a new course for our program titled "Gender and Sport in American Society."

We welcomed a new assistant professor, Maya Boutaghou, who joined our program after completing a two-year Mellon postdoctoral fellowship at UCLA. Her research focuses on women writers in North Africa, the Middle East, and Asia. We also welcomed two new graduate assistants: Linda Smith (PhD student in PIR), and LaToya Eaves (PhD student in GSS). In addition, we had great help from two undergraduate students, Danielle Fox (who now puts together the WS weekly digest) and Patrick St. Jean Taylor.

We have many new WS affiliated faculty who have joined FIU in the past few years. Some of our most active new faculty are assistant professors Steven Blevins (English), Whitney Bauman (Religious Studies), Caroline Faria (Global and Sociocultural Studies), and Asia Eaton (Psychology and SISH), who bring a wealth of expertise in Gender, Sexuality, and Women's Studies to our program. Our WS visiting scholar, Michaela Moura-Kocoglu, whose research focuses on indigenous women's writing in the South Pacific region, taught the first section of our new global learning course "Gender Issues across the Globe" this past summer.

Our main curriculum initiative this past year was to develop, and propose for approval, a new undergraduate certificate in Queer Studies. This certificate has now been approved by our university senate, and we will begin to implement it next year. WS professor Vrushali Patil, chair of the WS curriculum committee, led this effort, along with professors Blevins, Boutaghou, and Bauman.

Our WS Board member, Margaret McCaffery,

worked with Professor Phillip Church (Theatre) to produce the play “Body and Sold” at FIU, which shines a spotlight on the problem of human trafficking involving minors in the U.S. Margaret accompanied the production to Washington, D.C. this year where the cast of FIU students gave a performance at the Kennedy Center.

Through our internship program, Women’s Studies sends students into the community to work at organizations that serve marginalized groups and that promote the full participation of women in all spheres of our society. Our students have worked with the Women’s Park, Kristi House, “Terra Madre”—an FIU women’s music radio program, and Fraggdoll—an organization of women video gamers. WS professor Dawn Addy (Labor Studies), who teaches courses in prisons in South Florida, supervised one of our interns this year who worked with a prison education program.

A new “School of Integrated Science and Humanity” (SISH) was created in the College of Arts and Sciences this year, and the Women’s Studies Center is now part of SISH. Former WS Director, Professor Suzanna Rose, was appointed as the founding Director of SISH. Dr. Rose continues to be an active researcher in Women’s Studies and we are fortunate to have her as a core faculty member in our program, despite her heavy administrative responsibilities. SISH will promote collaboration among faculty whose research focuses on human health, and Women’s Studies will contribute to new initiatives in this area.

Having completed my third year as Director, I will be taking a research leave next year to take up residence at Princeton University’s Center for Human Values (<http://uchv.princeton.edu/>) as a Laurance S. Rockefeller Visiting Fellow. Professor Yesim Darici (Physics) will be Acting Director for 2011-12, and will bring new perspectives and expertise on gender issues in the sciences to our Center.

In the pages of this report, you can read more about the activities and people I have mentioned, and also about many additional faculty, students, and staff who contribute to the work of our Center.



Yesim Darici, Ph.D.

2011-2012 Women’s Studies Interim Director

Dr. Yesim Darici received her Ph.D. from University of Missouri-Columbia in 1985. She worked at Amoco Research Center, Naperville, IL and at West Virginia University, Morgantown before joining the Florida International University Physics Department in 1987. She is an experimental Solid state Physicist and her research interests are in SPR, nanotechnology and structural and electronic properties of complex materials.

She received two teaching awards one from the Florida International University Foundation in 1997 “ *Excellence in Teaching* ” award and one from Florida State University System *Teaching Incentive Award*, 1996. She served as the Elected Education Officer of National Society of Hispanic Physicists (NSHP). She is a former-reviewer for the National Science foundation (NSF) Graduate Research Fellowship Program (GRFP) and a serves on the Committee on Minorities (COM) for the American Physical Society (APS).

Dr. Darici’s work on Physics Education includes summer programs for minority 6 to 12 grade school kids and training programs for high school teachers. These programs are Switch on physics (State Funded), Upward Bound (DOE) and FL Promise. She was for many years the site coordinator for the Woodrow Wilson National Fellowship Foundation (WWNFF) Teacher Outreach (TORCH) Program.

WOMEN'S STUDIES STAFF MEMBERS



PAULA E. POWELL

Administrative Assistant

Paula joined the Women's Studies Center in 2008 and has since been an intergral cog in the workings of the department, coordinating student and faculty issues, as well as event planning.

She is originally from Kingston, Jamaica and just prior to immigrating to Florida in 1998, worked as a freelance writer at the *Gleaner* and *Sunday Herald* newspapers for eight years.

In Florida, her work experience has been focused in the Education field, having worked for over eight years at a private university and Miami Dade College prior to working with FIU. Paula produced "Real Talk, Real Issues," a community-service radio program, and has been a contributor to Florida's foremost Caribbean community newspaper, *Caribbean Today*. Paula is currently studying International Relations at FIU.

CHRISTI M. NAVARRO

Graduate Assistant

Christi has been working with the Women's Studies Center as a graduate advisor since Fall 2008. She has a Bachelor's degree in Biological Sciences from FIU and a Master's degree in Educational Leadership from Nova Southeastern University.

She is currently working on her Ph.D. in Public Health at the Robert Stempel College of Public Health & Social Work. Her doctoral research examines at the impact of gender and sex education on sexual risk behaviors among high school students in south Florida.

While dedicated to her studies, Christi has also been very involved in the Women's Studies program activities and student groups.



WELCOME TO OUR NEW WS STAFF MEMBERS!



LINDA D. SMITH

Graduate Assistant

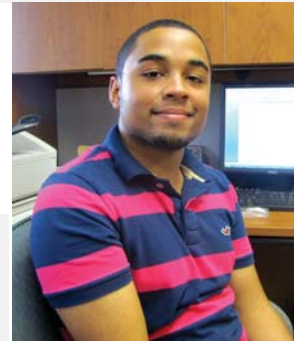
Linda D. Smith is a first year doctoral student in Political Science and also working on a graduate certificate in Africa and African Diaspora Studies. She also holds a Graduate Assistantship with the Women's Studies Center where she works as an Academic Advisor.

She holds a BA from Illinois State University with a double major in Spanish and Political Science. She has a Master's in Public Administration from Texas Southern University. Her current research interest include: black social movements in Latin America, the politics of inter-sectionality of race and gender, and comparative politics.

PATRICK ST. JEAN-TAYLOR

Student Assistant

Patrick joined the Women's Studies department in 2010. He is a first year student at FIU pursuing a degree in Marketing. He has been a very helpful addition to the Women's Studies front office operations.



LATOYA EAVES

Teaching Assistant

LaToya joined the Women's Studies department in Spring 2011 as a Teaching Assistant for Dr. Shrage's online Gay & Lesbian Across Societies course. She is currently pursuing her Ph.D. in Global and Sociocultural Studies and a Graduate Certificate in Women's Studies. Her research interests include racial identity, queerness, and life in the American South.

DANIELLE FOX

Student Assistant

Danielle's is the newest addition to the Women's Studies Center. She began in 2011 and hit the ground running with assisting with listserv communications, website maintenance, and taking photos at department events. Danielle is currently a Photography student at FIU.



BOOK PUBLICATIONS

Moura-Kocoglu, Michaela. *Narrating Indigenous Modernities: Transcultural Dimensions in Contemporary Māori Literature* (Amsterdam & New York: Rodopi, in print).

BOOK CHAPTERS

Boutaghou, Maya. "Peur de la fiction? Le cas de la modernité arabe", [Fear of Fiction? The Case of Arab Modern Culture] in *Fiction et cultures: la pensée de la fiction est-elle universelle ?*, éd. Françoise Lavocat et Anne Duprat, Paris, SFLGC – Lucie Éditions (Collection Poétiques comparatistes), 2010, p. 93-110.

Boutaghou, Maya. "Émergences littéraire et différenciation esthétique", [Literary Emergence and Aesthetic Differentiation] in *Mélanges offerts au Professeur Jean-Marie Grassin*, éd. Juliette Vion-Dury, Paris, Peter Lang, 2011, p. 41-48.

Patil, Vrushali, Stephens, Dionne P., & T. L. Thomas. In press. "STI Prevention & Control for Women: A Reproductive Justice Approach to Understanding Women's Experiences Globally." In J. Chrisler (Ed.) *Reproductive Justice: A Global Concern*. (Joint project of APA Division 52's International Committee for Women and APA Division 35's Global Issues Committee.) Santa Barbara, CA: Praeger Publishing.

Rose, Suzanna M. & Danner, M. (2010) Money matters: the art of negotiating the academic contract for women. In M. E. Lenning, Brightman, S., & S. Caringella (Eds.), *A Guide to Surviving a Career in Academia: Navigating the Rites of Passage* (pp. 33-56). NY: Routledge.

Stephens, Dionne P. (Invited chapter- Accepted for publication). The influence of mainstream Hip Hop's female sexual scripts on African American women's dating relationship experiences. In M. Paludi (Ed.) *The Psychology of Love*. Santa Barbara, CA: Praeger Publishing.

JOURNAL PUBLICATIONS

Barrett, Lynne. "Black Velvet," (essay) *The Written Wardrobe*, Feb 2011.

Barrett, Lynne. "What Editors Want," (essay) *The Review Review*, April 2011.

Barrett, Lynne. "Alchemy," (short story) *Pig in a Poke*, Oct. 2010.

Barrett, Lynne. "Hatteras Bride, Knitting," (poem) in the *Southern Women's Review* 32, electronic edition July 2011.

Barrett, Lynne. "Macy Is The Other Woman," (short story in audio form) in *The Drum Audio Journal*, June 2010.

Eaton, Asia & Rose, Suzanna M. "Has heterosexual dating become more egalitarian? A 35-year review

using Sex Roles" in *Sex Roles* 2011.

Faria, Caroline. "Staging a new South Sudan in the US: Men, Masculinities and Nationalist Performance" (accepted with *Gender, Place and Culture*).

Faria, Caroline. (2011) "We want empowerment for our women: Transnational Feminism, Neoliberal Citizenship, and the Gendering of Women's Political Subjectivity in Post-conflict South Sudan" *Signs: Journal of Women in Culture and Society* Vol. 36(3) (equal contribution).

Faria, Caroline. (2010) "Contesting Miss South Sudan: Gender and Nation Building in Diasporic Discourse" *The International Feminist Journal of Politics* Vol. 2(2): 222-243.

Gillis, Marin & Hanrahan, J. "Search of an Author: Exciting Collaboration or Unethical Conduct?" *Med Ed Portal* (Sept 2010).

Patil, Vrushali. 2011. "Transnational Feminism in Sociology: Articulations, Agendas, Debates." *Sociology Compass*.

Patil, Vrushali. 2011. "Narrating political history about contested space: Tourism websites for India's Northeast." *Annals of Tourism Research*.

Patil, Vrushali. 2011. "Reproducing-Resisting Race and Gender Difference: Examining India's Online Tourism Campaign from a Transnational Feminist Per-

spective." *Signs*.

Shrage, Laurie. 2011 (2010 online pre-print) "Does the Government Need to Know Your Sex?" *Journal of Political Philosophy*.

Stephens, Dionne P., & Thomas, T. (In press). Hispanic women's expectations of campus-based health clinics addressing sexual health concerns. *American Journal of Sexuality Education*, 6.

Strycharski, Andrew. (2010) "Pedagogical Affect in the Early Sidney-Languet Correspondence." *Sidney Journal* 28.1 (2010): 25-51.

Weeks, Ophelia, et al., (2011) QBIC, an interdisciplinary and quantitative biological sciences curriculum: concept to implementation, *Journal of Science Education*, 12 (1):11-14.

Valdés, James J., and **Weeks, Ophelia I.** (2010) Combined estradiol and lithium increase ER- α mRNA in embryonic C57Bl/6J primary hippocampal cultures, *Acta Neurobiologiae Experimentalis* 70 (3):288-296

Valdés, James J., Ramirez, Franchesca Juarez, M., Barbara and **Weeks, Ophelia I.** (2010) Lithium enhances object recognition and cortical mRNA expression in ovariectomized C57Bl/6J mice, *Acta Neurobiologiae Experimentalis* 70 (3): 297-302.

BOOK REVIEWS & OTHER PUBLICATIONS

Addy, Dawn. (2011) Behind the Kitchen Door: The Social Impact of Inequality in Miami's Growing Restaurant Industry.

Boutaghou, Maya. (forthcoming 2011) "Elles-mêmes comme des autres : Toru Dutt (1856-1877) et Mayy Ziyadha (1886-1941)," [Themselves as Others : Toru Dutt (1856-1877) and Mayy Ziyadha (1886-1941)] in *Dislocation culturelle et construction identitaire en littérature et dans les arts*, Nancy, Presses de l'Université.

Boutaghou, Maya. (2010) "Alger montre ses marges: la mère, la fille et la prostituée dans Viva Laldjérie de Nadir Moknèche", [Algiers shows its margins: the Mother, the Daughter and the Prostitute] *Femmes marginalisées et Insertion sociale*, éd. Fatima Sadiqi, Fès [Maroc], *Imprimerie Imagerie Pub Neon*, 33-46.

Rochelson, Meri-Jane. "Israel Zangwill and Oscar Wilde." Revised and reprinted from *A Jew in the Public Arena: The Career of Israel Zangwill* (2008): 79-81. *The Oscholars*, online journal. Special issue on Oscar

Wilde and the Jews. September 2010.

Rochelson, Meri-Jane. "Reaching the Reader in Scholarly Nonfiction." "From the Masters," September 2010. Online essay published simultaneously on the websites of *Screw Iowa* and *Bridle Path Press*.

Stephens, Dionne P. (2010). Examining global youth development through a camera's eye [Review of the book *Youth Culture in Global Cinema*]. *Journal of Adolescent Research*, 25: 885 - 888

Stephens, Dionne P. (2010, Fall). Reviewing the research on Black women's mentoring experiences. *Psychology of Black Women*, 4:12.

Stephens, Dionne P. (2010, Summer). Enjoying your colleagues, enjoying your job. *Psychology of Black Women*, 3:11-12.

RECOGNITION

Shrage, Laurie. FIU President's Access and Equity Award 2010

Stephens, Dionne. 2011 FIU Online Exemplary Course Award for Instructional Development.

CONFERENCE PAPERS

Barrett, Lynne. "The New World of Online Publishing," *Florida Gulf Coast University Sanibel Writers Conference*, Big Arts Center, Sanibel, FL, Nov. 6, 2010.

Barrett, Lynne. "Who's Southern Now? Re-imagining the literature of the Gulf States in the light of immigration, emigration, development, ruins, spills, storms, and other transformations." *Gulf Coast Association of Creative Writing Teachers Conference*, University of South



Michaela Moura-Kocoglu

Alabama-Baldwin Campus, Fairhope, AL, April 9, 2011.

Barrett, Lynne. "The Writer Who Can't Sit Still" *Gulf Coast Association of Creative Writing Teachers Conference*, University of South Alabama-Baldwin Campus, Fairhope, AL, April 9, 2011.

Boutaghou, Maya. 2011 (April 6) - Round Table "The Life of the Mind : Art and Culture as a Strategic Resource" organized by the College of Arts and Sciences, with Samina Quraeshi (public speaker).

Boutaghou, Maya. 2011 (March 31- April 3) - "Thinking about World Literature Upside-Down : Nineteenth Century Arab and Indian perspectives on World Literature", seminar American Comparative Literature Association, "Where in World Literature is the Postcolonial?" organized by Julietta C. Singh, University of Richmond.

Boutaghou, Maya. 2011 February - Round Table organized by SIPA (School of International and Public Affairs, Florida International University): "Egypt Teach-In".

Boutaghou, Maya. 2010 December - "Being cosmopolitan in nineteenth century Bengal ? The case of Toru Dutt (1856-1877), Bengali poetess", University of Orleans, France.

Boutaghou, Maya. 2010 October - "Secularism and Islam", Lecture given in the seminar of Professor Laurie

Shrage, Florida International University, "Feminism and Philosophy".

Eaton, Asia. (May, 2011). "Teaching off the track: A roundtable discussion on the perils and pay-offs of graduate student teaching and adjunct teaching". *Society for the Teaching of Psychology Program* at the annual meeting of the *Mid-western Psychological Association*, Chicago, IL.

Eaton, Asia & Rose, Suzanna. (2011, March). "Dating scripts among young heterosexuals today: Is dating becoming more egalitarian?" at the annual meeting of the *Association for Women Psychologists*, Philadelphia, PA.

Eaton, Asia. (2011, March). "Has Feminism changed the dissemination of psychological science? An analysis of introductory psychology textbooks" at the annual meeting of the *Association for Women Psychologists*, Philadelphia, PA.

Eaton, Asia. (2011, March). "The Power of a co-witness" at the *AP-LS International Conference*, Miami, FL.

Faria, Caroline. 2010. "Paper Session: Launching the Movement on-line: cyber solidarity and surveillance in South Sudanese diasporic medias Association of African Studies (ASA)." *Annual Conference*, San Francisco, USA (November).

Faria, Caroline. 2010. "Paper Session: Launching the Movement on-line:

cyber solidarity and surveillance in South Sudanese diasporic medias Association of American Geographers (AAG)." *Annual Conference*, Washington D.C, USA (April).

Faria, Caroline. 2010. "Panel Session (Co-organizers with Ryan Good): Fieldwork in an African Setting Association of American Geographers (AAG)." *Annual Conference*, Washington D.C, USA (April).

Faria, Caroline. 2010. "Panel session (organizer): On Faith, Place and Feminism Association of American Geographers (AAG)." *Annual Conference*, Washington D.C, USA (April).

Gillis, Marin. "The Use of the Arts in the Self-Care of Health Practitioners" *American Society of Bioethics and Humanities*. San Diego CA. Oct 2010.

Gillis, Marin. "Ethics Consultations & Medical Education: Starting an Innovative Program at Wertheim College of Medicine" *International Clinical Ethics Consultation Conference*. Amsterdam, May 2011.

Moura-Kocoglu, Michaela. "Fighting the 'double inheritance of racism and sexism': Australian Aboriginal Literature, Domestic Violence, and Indigenous Feminist Responses" (European Association for Literature and Language Studies, Istanbul/Turkey, April 2011).

Moura-Kocoglu, Michaela. "Indigenous modernities challenging established categories of gender, race and ethnicity in recent Māori narratives" (United States Association for Literature and Language Studies, Boca Raton/Florida, April 2011).

Patil, Vrushali. "Cross-group connectivities, institutional divides: some thoughts on racial and ethnic studies in the United States academy."

Rose, Suzanna M. Career and Leadership Strategies for Women in Academe. International Congress of Applied Psychology. Melbourne, Australia, July 2010.

Shrage, Laurie. December 28, 2010, Organizer and Chair, "APA Committee Session: Author Meets Critics: Bruce Kuklick, Black Philosopher, White Academy: The Career of William Fontaine"

Stephens, Dionne. (2010, April). Developing a fully online class in the social sciences. Presentation in M. Whiddon (Symposium Chair), Online Learning: A New Generation of Learning. Annual School of Education Pedagogy Conference, Miami, FL.

Thomas, T., **Stephens, Dionne** & *Higgins, M. (2011, April). Taking the Shot: Hispanic males' perceptions of HPV infection and HPV Vaccination. Presented at Emory University Research Day.

Stephens, Dionne. (2011, February). African American adolescent female identity development in Hip Hop cultural contexts. Innovative Session presentation for The Annual meeting of the Society for Research on Identity Formation.



Dionne Stephens, Laurie Shrage, & Cathy Leff

Daytona, FL.

Stephens, Dionne, & Fernandez, P. (January 2011) Examining the influence of skin color values on Hispanic women's identity beliefs. Paper presentation for The Qualitative Report Annual Conference, Fort Lauderdale, FL.

Garcia, D., Gonzalez, R., **Stephens, Dionne,** & Thomas, T.L. (2010, November). Hispanic college women's HPV vaccination beliefs. Poster Presentation for the 10th Annual Women, Gender and Sexuality Student Conference. Florida International University Women's Studies Program, Miami, FL.

Sanchez, J., **Stephens, Dionne,** & Thomas, T.L. (2010, November). Hispanic college men's HPV knowledge and self perceptions of risk. Poster Presentation for the 10th Annual Women, Gender, and Sexuality Student Conference. Florida International University Women's Studies Program, Miami, FL.

Stephens, Dionne. (2010, August). Cultivating a Sister Circle: Developing and maintaining healthy relationships among Black Women. Invited presentation in G. Nicols (Symposium Chair), Promoting the Mental Health and Physical Health of Black Women. Annual meeting of the American Psychological Association- Division 35, Section 1: The Psychology of Black Women. San Diego, CA.

Strycharski, Andrew. "Paradox, Genre, Misreading: Philip Sidney's Ethical Defense" Forty-Sixth International Congress on Medieval Studies. May 12 - 15, 2011. Kalamazoo, MI.

FUNDING/GRANTS

Eaton, Asia. 2011 Kauffman Professor, Florida International University (FIU), February 2011-present. Selected by the Pino Global Entrepreneurship Center at FIU as a Kauffman Entrepreneurial Professor for 2011, receiving an award of \$15,000 to

foster entrepreneurial research.

Faria, Caroline. 2010. Tucker Foundation, Dartmouth College. Grant to develop a community-based service learning course. Joint application with Professor Jennifer Fluri.

Patil, Vrushali. College of Arts and Sciences Summer Development Grant, FIU, 2010.

Rose, Suzanna M. (Co-PI) U. S. Department of Education Title V Grant (Co-PIs: Kenneth Furton, Douglas Robertson, Gisela Casines, FIU). Opening the Gateways: The High Tech-High Touch Initiative: Improving Student Success in Math, Writing, and Reading, 10/2010-9/2015, \$4.2M. (Awarded)



Maya Boutaghou & Aurora Morcillo

Rose, Suzanna M. (PI). Parents as Teachers, The Children's Trust, 8/1/11-7/31/14, \$260,000 per year for 3 years, Grant total = \$780,000. Awarded.

Through Psychology: **Rose, Suzanna M.** (PI). The LEAN Project: Lifestyle, Exercise, Attitude & Nutrition. The Children's Trust. \$149,999 per year/ \$448,472.32 for 3 years. Awarded.

Stephens, Dionne & Shrage, Laurie. 2011 Andrew Mellon Teaching Gallery Award, Wolfsonian Museum, Frost Museum and Andrew W. Mellon Foundation.

Strycharski, Andrew. Summer, 2010. Franklin Fund Research Grant, American Philosophical Association. \$5,000.00.

Strycharski, Andrew. Summer 2010. Folger Institute Seminar: Reading, Writing and Erasmus. \$3,000.00.

FELLOWSHIPS

Patil, Vrushali. School of International and Public Affairs Broad Research Fellowship Award, FIU, 2011

Shrage, Laurie. Laurance S. Rockefeller Fellowship at Princeton University's Center for Human Values for 2011-12.

Stephens, Dionne. 2010 Advanced Training Institute in Health Behavior Theory Fellowship, National Cancer

Institute and the National Institute on Drug Abuse.

INVITED ADDRESSES

Addy, Dawn. Southern School for Women Workers, National Labor College, Silver Spring Maryland. "Developing Female Leadership in Your Organization" August 5, 2010.

Addy, Dawn. Southern School for Women Workers, National Labor College, Silver Spring Maryland. "Addressing Women's Issues and Diversity in the Workplace" August 4-8, 2010.

Barrett, Lynne. "Storytelling For Social Impact," Visiting Writer, Barry University, Miami, FL, Sept. 13, 2010.

Barrett, Lynne. "May's Story," and "Spinning Fact Into Fiction," *International Women's Writing Guild Conference*, Brown University, Providence, RI, August 3 & 4, 2010.

Barrett, Lynne. "The Thread of Story," Keynote Address, *Mendocino Coast Writers Conference*, College of the Redwoods, Fort Bragg, CA, July 31, 2010.

Barrett, Lynne. "Flash Forms," *Mendocino Coast Writers Conference*, College of the Redwoods, Ft. Bragg, CA, July 29, 2010.

Barrett, Lynne. "Understanding Plot: The Fundamentals of Story" and "Understanding Plot, Presentation and Time," *Muse &*

the *Marketplace Conference*, Park Plaza Hotel, Boston, MA, May 1 & 2, 2010.

Barrett, Lynne. "The Borges Cure," Lip Service Stories (curated nonfiction reading series), Books & Books, Coral Gables, FL, April 24, 2010.

Boutaghou, Maya. 2011, May 11 – Presentation of her book in progress, *A Poetics of the Trans-cultural Subject*, "Littératures et théories postcoloniales", organized by Laetitia Zecchini (CNRS) et Lise Guilhamon (Université de Versailles – Saint Quentin – SUDS), à l'École Normale Supérieure (Rue d'Ulm).

Gillis, Marin. Keynote Speaker at "Promotion of Infant Formula in the Healthcare Setting: Some Ethical Considerations" for the Southern Nevada Academy of Pediatrics. Las Vegas April 2011.

Patil, Vrushali. "Thinking Critically about Western Beauty Ideals," Presented at Love your Body Event at FIU, October 12, 2010.

Rochelson, Meri-Jane. Public Lecture, "Israel Zangwill: A Jew in the Public Arena." Presented at the Jewish Museum London, co-sponsored by the Jewish Historical Society of England. May 27, 2010.

Rochelson, Meri-Jane. Public Lecture, "Zangwill and the Jewish East End." Presented at Toynbee Hall, London, for the Jewish East End Celebration Society. May 30, 2010.

Rose, Suzanna. 2011 Invited Speaker, Alliance for the Advancement of Florida's Academic Women in Chemistry & Engineering.

Shrage, Laurie. April 8, 2011, Invited Speaker, "Reinventing

the Sexual Contract: Marriage, Sex, and Autonomy," Philosophy Department, University of Miami, Coral Gables, FL

Shrage, Laurie. November 26, 2010, Invited Speaker, "Let's Talk About Sex" Lecture Series, Cape Breton University, Sydney, Nova Scotia, "Sexual Orientation and Gender Variance"

Shrage Laurie. November 24, 2010, Invited Speaker, "Sex and the Citizen" Lecture Series, Mount Saint Vincent University and the Canadian Center for Ethics in Public Policy, Halifax, Nova Scotia, "Reinventing the Sexual Contract."

Stephens, Dionne. 2011 In a Woman's Body: Contemporary images of women in sport. Frost Museum and Florida International University Women's Studies Program.

Stephens, Dionne. 2010 Hip Hop in Miami: The role of Hip Hop in Miami's youth cultures. Historical Museum of Southern Florida Teen Miami Project.

Strycharski, Andrew. Respondent. David Gardiner, "Yeats, Heaney and the Russian Cyber Militia." FIU Humanities Center's Humanities and the Urban Environment Lecture Series. January 20, 2011. Miami, FL.

Weeks, Ophelia. Guest Speaker, Rotary Club of Monrovia, at *The Point*, Mamba Point, Liberia, "The Road Back Home - Our Responsibility as Educators", 4 February 2011.

EDITORIAL BOARDS

Barrett, Lynne. Editor, *The Florida Book Review*.

Rose, Suzanna. *Sex Roles*, Editorial Board Member, reviewed 4

manuscripts in 2010-11; Distinguished Reviewer, *Psychology of Women Quarterly*, reviewed 2 ms; Editorial Board for the *International Journal for Women and Gender Research*, 2007-present; Editorial Board, *Women's Forum* (Research Journal, Univ. of Sindh, Pakistan), 2007-present; Member, Scientific Committee, International Congress of Psychology Conference.

FILMS/MEDIA

Shrage, Laurie. Co-Curated (with Prof. Dionne Stephens and Jon Mogul): "Women in Motion: Fitness, Sport, and the Female Figure," Wolfsonian Teaching Gallery Exhibit at the Frost Museum, spring 2011

Shrage, Laurie & Stephens, Dionne. "And the Women Gather" [television program] broadcast on Channel 8 Miami. Topic: Cultural representations of women's bodies in sports and physical activities.

Stephens, Dionne. 2011 Let's talk about it [live radio program] broadcast on WZAB 880 AM. Topic: Ethnic differences in beauty standards and plastic surgery decision making

Stephens, Dionne. 2010 The Root Magazine. Topic: Video Vixens' influence on Black women over the age of thirty's engagement in plastic surgery.

Weeks, Ophelia. One of 16 faculty members showcased in a 16-day advertising series in the Miami Herald (May 17-31, 2011). The Division of External Relations designed the ads as part of FIU's Worlds Ahead brand campaign.

PROFESSIONAL SERVICE

Addy, Dawn. Member and Treasurer of UALE (United Association for Labor Educators) Women's Committee; NWSA Member; CLUW (Coalition of Labor Union Women) Miami Chapter Secretary.

Barrett, Lynne. Board Member, The International Women's Writing Guild; Advisory Board, Gulf Coast Association of Creative Writing Teachers; 2011 Fiction Judge, The Ernest Svenson Prize in Fiction, University of New Orleans M.F.A. Program.

Eaton, Asia. Ad Hoc Reviewer for Time-Sharing Experiments for the Social Sciences (TESS); Ad Hoc Reviewer for Psychology of Women Quarterly (PWQ); Reviewer for Association for Women in Psychology (AWP) Annual Conference.

Faria, Caroline. Student Coordinator, Africa Speciality Group, 2008-2011 term.

Gillis, Marin. Executive Member, for the Association for Feminist Ethics and Social Theory (FEAST); Reviewer for the International Feminist Association of Bioethics Journal; Chair for the Committee for Non-Academic Philosophy Careers. American Philosophical Association; Member (Ex Officio) of the Committee on Academic Careers and Placement. American Philosophical Association.

Patil, Vrushali. Co-Chair, Sister-to-Sister Committee, Sociologists for Women in

Society, 2011-13; Member, Nominations Committee, Sex and Gender Section of American Sociological Association, 2010-2011; Organizer and Discussant, Panel titled "Militarism/War, Empire and Gender: Transnational Feminist Perspective" at the Annual Meeting, American Sociological Association, Atlanta, GA, 2010; Member, Awards Committee, Sociologists for Women in Society, 2010; Reviewer, Gender and Society; Wagadu: A Journal of Transnational Women's and Gender Studies

Rochelson, Meri-Jane. President, Nineteenth-Century Studies Association; Division Coordinator: Modern Jewish Literature, Association for Jewish Studies; Manuscript reviewer, university press (unnamed to preserve confidentiality)

Rose, Suzanna. Executive Committee Member, Div. 35 (Psych of Women), APA, 2007-present; Treasurer, Div. 35 (Psychology of Women), American Psychological Association, 2007-present.

Shrage, Laurie. Completed three-year term as American Philosophical Association's Ombuds for Nondiscrimination 2008-2011.

Stephens, Dionne. Newsletter Editor- Section 1: Psychology of Black Women, Division 35: Society for the Psychology of Women, American Psychological Association.



Lauren Christos

Strycharski, Andrew. Council, International Sidney Society; Referee, Sidney Journal.

Weeks, Ophelia I. TOKTEN (Transfer of Knowledge through Expatriate Nations) Program beneficiary for positions at the University of Liberia (UL), West Africa (sponsored by the Civil Service Agency of the Republic of Liberia & the United Nations Development Program [UNDP]) as *Visiting Professor of Anatomy*, A.M. Dogliotti College of Medicine (AMDCM-UL) – teaching a *Neuroanatomy* course to 1st year medical students; *Visiting Professor of Biology*, Department of Biology – teaching a *HIV/AIDS: Science, Society & Global Issues* course to freshmen & sophomores; *Technical Advisor* to the AMDCM Dean

COMMUNITY SERVICE

Addy, Dawn. Chair of the Miami-Dade Commission on Ethics and Public Trust; Member of the Citizen's Independent Transportation Trust Nominations Commit-

tee for Miami-Dade County; Member of the South Florida Prisoner Re-Entry Task Force; Advisory Board of ROC (Restaurant Occupational Center) Miami.

Gillis, Marin. Executive Member of Moments of Memory: Art from the Hearts of Alzheimer's Artists (5013c); Advisory Board for Florida Bioethics Network; Board Member for University of Miami Ethics Programs: Bioethics.

Rose, Suzanna. Board Member, Miami-Dade Women's History Coalition, 2009-present.

FIU SERVICE

Addy, Dawn. Senator and Secretary of the FIU Faculty Senate; IRB (Institutional Review Board) member for both boards: Social Sciences (member) and Medical/Clinical (Prison Representative); CAS Curriculum Committee; WST Assessment and Evaluation Committee; WST Nomination Committee; various search & screen committees.

Barrett, Lynne. Advisory Board, Women's Studies Center.

Boutaghou, Maya. Member of the Curriculum Committee in Women's Studies; Member of a Search Committee for a position in Chinese Language and Culture in Modern Languages; Committee member for the creation of a Master Degree in Modern Languages at FIU.

Christos, Lauren. Women's Studies Liaison for the FIU Library.

Eaton, Asia. On Dissertation Committee for Tanisha Drummond in the College of Education; On Survey Task Force

headed by Irma Becerra-Fernandez.

Faria, Caroline. 2011 Co-organizer with Heather Russell, Maya Boutaghou, Jean Rahier and David Rifkind of "Crossing the Sahara and Back: African Feminisms in Dialogue" *A symposium on Transnational African Feminisms*, Nov. 2011.

Gillis, Marin. Faculty Advisor for AMSA (American Medical Students Association). Appointed Director of Integrated Ethics and Medical Humanities, Wertheim College of Medicine, FIU.

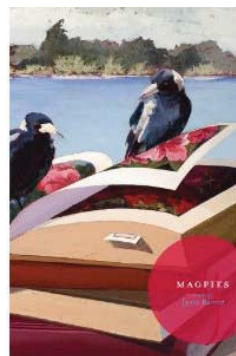
Patil, Vrushali. Member, Ad hoc Committee on Curriculum, Global & Sociocultural Studies, 2010; Chair, Curriculum Committee, Women's Studies Center, FIU, 2009-2011; Discussant, AADS Works in Progress, 2011; Member, College Curriculum Committee, Women's Studies Center, FIU, 2009-2011; Discussant, AADS Event, 2010.

Rochelson, Meri-Jane. Associate Chair, Department of English; Member, Women's Studies Advisory Committee; Head Advisor, English, Biscayne Bay Campus (also available to advise for Women's, Sexuality, and Gender Studies); Chair, Undergraduate Curriculum Committee, English; Member, By-Laws Revision Committee, English; Member, Salary Committee, English; Member, Judaic Studies Advisory Committee; Safe Zone office certification

Shrage, Laurie. Chair of the Chairs Advisory Council (CAC) 2010-11; Member, FIU's Institutional Review Board for the Health Sciences; Vice President, FIU's Phi Beta Kappa chapter; Humanities in the Urban Envi-

ronment Advisory Board; Academy for the Art of Teaching Advisory Board

Rose, Suzanna. Senior Associate Dean, Sciences, 2010 and Founding Director, SISH, 2011 – separate report to Dean; Board Member, FIU Research Foundation, 2010-present; Board Member, FIU COM-Health Care Network, Inc., 2011-present; Member, University-Wide Building Committee, Graduate Science Complex, 2009-present; Member, Core Facilities Committee, Division of Research, 2011-present; Academic Advisory Board, Center for Leadership, College of Business Administration, 2009-present; Member, Women's Studies Donor Board.



New collection of short stories, *Maggies*, by Professor Lynne Barrett, will be published September 2011

2010-2011 WOMEN'S STUDIES GRADUATES



FALL 2010

Bachelor of Arts
Nicole Ceusters
Zahra Farooq
Terrica Merritt
Melinda Moyston

WS Certificate
Melissa Del Rey
Kimberly Ferguson
Anam Khan
Lauren Northover

Second Majors
Stephanie Lozada
Evelyn Melgar

SPRING 2011

Bachelor of Arts
Marlyne Charles
Mariella Toribio
Julia Williams

Second Majors
Nicole Albanese
Cathleen Chambless
Lauren Digiovanni
Lesline Fleurinord
Angelina Gaspard
Rebecca Peterson

Graduate Certificate
Julio Capo, Jr.

SUMMER 2011

Bachelor of Arts
Jason Valdivia

WS Certificate
Maria Murriel

Second Majors
Yagen Gutierrez

Graduate

Spotlight on our recent Women's Studies graduates and their experience with the department.

SPOTLIGHT

Crystal Ferro (Spring 2011)

Degree: Psychology & Religious Studies/Women's Studies Certificate

Honors: Dean's List; Summa Cum Laude; Theta Alpha Kappa (National Honor Society for Religious Studies & Theology)

"FIU Women's Studies increased my knowledge of women's issues as well as those of other minorities. The courses I took also expanded my view of our society and it's problems. All of this information will definitely be applicable in my own life as well as in my career as I pursue a Master's degree in Marriage and Family Therapy."



Julia Williams (Spring 2011)

Degrees: Social Work & Women's Studies

"I had a great experience with the Women's Studies Center. The advisors were very helpful and understanding and assisted me in all of my needs."

Lis-Marie Alvarado (Fall 2010)

Degrees: Women's Studies & Sociology/Anthropology/Latin American & Caribbean Center & Africa and African Diaspora Studies Certificates/International Relations & Mass Communications Minors

Awards: Excellence in Civic Engagement Medallion, 2010

Honors: Phi Beta Kappa, Alpha Kappa Delta, Sigma Iota Rho, Omicron Delta Kappa, Golden Key Honor Society, Delta Epsilon Iota, Lambda Alpha, and the National Scholars Honor Society.

"I have cherished the sisterhood and the nurturing atmosphere at the Women's Studies Center. I especially enjoyed learning about women's struggle for equality, feminist theories, and the significance of gender and sexual orientation globally using a social justice framework. My gratitude to all the staff, faculty, fellow classmates and the women leaders from the Women Studies Student Association. As well, I would like to acknowledge Dr. Shrage, Paula Powell, Dr. Patil, and Dr. Morcillo, for their mentorship. They are powerful, intelligent, extraordinary, and non-conforming women who have made a difference in my academic career and personal growth. I regard them dearly."



Lis-Marie in La Guajira, Colombia. She was invited by the Organization Wayuu Munsurat (Women Waiving Peace) to speak representing the department and our work. The event was on November 25, 2010 during the International Day for the Elimination of Violence Against Women.

student activities & achievements

Women's Studies Graduate Student Achievements

JOURNAL PUBLICATIONS

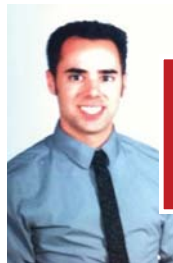
Bares, Bronwen C. & Onorato, SM (2010). Women Who Lead: Utilizing a Strong Collaboration between Student Affairs and Academic Affairs to Facilitate the Professional Development of Our Students. *NASPA Journal About Women in Higher Education*, 3(1), 261-263.

Whitehead, Chandra L. (In press). "Brick by brick: Women and barriers to nontraditional / vocational education." *Making Waves*, 9.

Whitehead, Chandra L. (2011). Women in nontraditional career and technical education. In M. S. Plakhotnik, S. M. Nielsen, & D. M. Pane (Eds.), *Proceedings of the Tenth Annual College of Education & GSN Research Conference* (pp. 226-231). Miami: Florida International University. http://coeweb.fiu.edu/research_conference/

RECOGNITION

Capo, Julio. Winner of the Carlton Qualey Best Article Award of the Immigration and Ethnic History Society and FIU's First Annual University Graduate School Provost Award for Outstanding Paper or Manuscript for "Queering Mariel: Mediating Cold War Foreign Policy and U.S. Citizenship among Cuba's Homosexual Exile Community (2010).



Julio Capo Jr

AWARDS/SCHOLARSHIP

Bares, Bronwen. FIU Division of Student Affairs Distinguished Performance Award for Professional Development.

Eaves, LaToya E. 2011 Honorable Mention, Ford Foundation Pre-doctoral Fellowship Competition

Eaves, LaToya E. 2011 University Graduate School Scholarly Forum "Best of" Award Recipient, Florida International University,

Eaves, LaToya E. 2011 Willie E. Williams Endowment Award, Florida International University, Miami, Florida

Eaves, LaToya E. 2010 Selected Participant, Queering the Countryside Writing Workshop, Indiana University

Whitehead, Chandra L. Willie D. Lawson, Jr. Memorial Scholarship, National Black Graduate Student Association, 2011.

CONFERENCE PAPERS

Eaves, LaToya E. "Finding Place in Cyberspace – Rurality, Social Networking, and Black Queer Women." Presented at the annual meeting of the Association of American Geographers, Seattle, WA.

Eaves, LaToya E. 2011. "Locating Place, Negotiating Space: Black Queer Women in the Rural / American South." International Conference of the Collegium for African American Research. Presented at the 9th meeting in Paris, France.

Eaves, LaToya E. (March 2011) "Wide Open (Cyber) Spaces: Queer Black Women, Rurality, and the U.S. South." Presented at the Annual Graduate Scholarly Forum at FIU, Miami, Florida.

Eaves, LaToya E., Annice Fisher, & Juan Guardia. 2011. Colorblindness Now: Educating with Purpose Towards Social Justice." Presented at the annual meeting of the National Assoc. Student Personnel Administrators, Philadelphia, PA.

Eaves, LaToya E. 2011. "Black Women and Queerness in the Rural South." Presented at the State of African and African Diaspora Studies Conference, New York, New York.

Eaves, LaToya E. 2010. "Missed Connections: Locating Black Queer Women in the Rural American South." Presented at the 10th Annual Women, Gender, and Sexuality Student Conference, Florida International University, Miami, Florida.

Kersjes, Elizabeth. (March 2011) "Human Rights Violations in Colombia - Solutions to the Continued Problem" Presented at the Annual Graduate Scholarly Forum at Florida International University, Miami, Florida.

Meeker, Carolyn. (April 2011). "Bondage and Discipline, Dominance and Submission, and Sadism and Masochism (BDSM) Identity Development." 10th Annual College of Education Research Conference. Florida International University, Miami, FL.



LaToya E. Eaves



Carolyn Meeker

Meeker, Carolyn (November 2010). "Dominance and Submission in Adult Relationships." Presented at the 10th Annual Women, Gender, and Sexuality Student Conference. Florida International University, Miami, FL.

Navarro, Christi M. "Sexual risk behaviors in gendered context among high school students." Presented at the 2011 National HIV Prevention Conference, Atlanta, GA.

Navarro, Christi M. "Gender Differences in Protective Sexual Health Behaviors among High School Students in Florida." Presented at the 2011 McKnight Doctoral Mid-Year Research and Writing Conference, Tampa, FL.



Navarro, Christi M. "Young Women & MENA: Sexuality and Reproductive Health Challenges in Contemporary Morocco." Presented at the Women, Gender, and Sexuality Student Conference, Miami, FL.

Whitehead, Chaundra L. (2011). "A Dream Deferred? An Evaluation of the Effects of an Unplanned Pregnancy Crisis on Women's Education Continuation." Presented at the Florida International University Annual Scholarly Forum, Miami, Florida.

Whitehead, Chaundra L. (2011). "Promoting Equity in Your Adult Education Classroom." Presented at the 27th Annual Florida Literacy Conference, St. Mary, Florida.

Whitehead, Chaundra L. (2011). "Resources for Corrections Educators." Presented at the 27th Annual Florida Literacy Conference, St. Mary, Florida.

FELLOWSHIPS

Capo, Julio. 2011-2012 Yale University Postdoctoral Associate, Ethnicity, Race, and Migration Program, American Studies

Navarro, Christi M. McKnight Doctoral Fellowship, 2008-12

FILM/MEDIA

Navarro, Christi M. Interview for La Ley Webinars on GenTV, February 11, 2011. Topic: College Brides Walk Miami. Available online at <http://youtu.be/v4zPVB3vfV0>

FIU SERVICE

Bares, Bronwen. Omega Phi Chi Sorority, Inc. Advisor 2010-2011; Student Life Awards Committee 2007-2011; University Wide Scholarship Selection Committee 2010; International Education Week Committee 2009-2011; International Women's Week Committee 2009-2010; Diversity Day Committee 2007-2010; SafeZone Committee 2007-2011

Eaves, LaToya E. WSGSA Conference Chair; Sociology, Anthropology, and Geography Graduate Student Association (SAGGSA) Colloquium Vice President; University Graduate

School Grievance Committee Student Member.

Meeker, Carolyn. 2011 Diversity Week committee

Navarro, Christi M. FIU co-organizer College Brides Walk Miami, February 11, 2011.

Navarro, Christi M. Associate Editor, *Making Waves Journal*, Summer 2010

Whitehead, Chaundra L. College of Education Graduate Colloquium Development Committee, Invited Committee Member.

Whitehead, Chaundra L. Women, Sexuality and Gender Association- FIU, 2008-Present / Vice-President (2011-2012), Council of Student Organizations Representative (2010-2011)

Whitehead, Chaundra L. College Of Education Graduate Student Network, 2009- Present / President (2011-2012), Secretary (2010- 2011).

Whitehead, Chaundra L. American Educational Research Association, 2011 / FIU Campus Liaison (2011)



COMMUNITY SERVICE

Bares, Bronwen. Strong Women, Strong Girls - Jump Into Spring Event, April 9, 2011.

Lewis, Makissa. Mentor, Strong Women, Strong Girls.

Meeker, Carolyn. Safe Zone Ally and 2011 FIU Women's Center Mentoring Partnerships Program

Navarro, Christi M. "Rios Project" organizer with WSSA

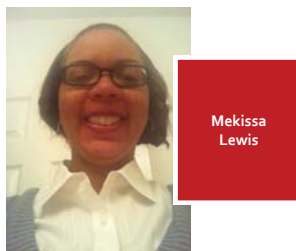
Whitehead, Chaundra L. Project L.E.A.D (Literacy for Every Adult in Dade).

Whitehead, Chaundra L. College Summit, NSU Miami, Florida, Summer 2010 and Summer 2011.

PROFESSIONAL SERVICE

Bares, Bronwen. NASPA Journal About Women in Higher Education manuscript reviewer

Meeker, Carolyn. Florida Career Professionals Association Annual Conference 2011 Programs Committee.



student activities & achievements

THE ELAINE GORDON SCHOLARSHIP



The Elaine Gordon Scholarship program was established in 1999 to honor the life and work of Elaine Gordon (1931-2000), a former state legislator who, for 22 years, championed equal rights for women. Rep. Gordon was a pioneering feminist elected to the Florida House in 1972. She sponsored and passed legislation that included the attempted ratification of the Equal Rights

Amendment, and legislation to protect women and children through child support enforcement and protection from domestic violence. In 1982, she was one of the first six women

inducted into the Florida Women's Hall of Fame in Tallahassee. She was the voice and guardian of abused children, victims of sexual assault, the elderly, the indigent and the mentally ill. She also introduced the terms "Ms." and "chairperson" to the legislature and had smoking banned in the House chamber and committee rooms more than 30 years ago. In the early 1980s she crafted and sponsored Florida's Patients' Bill of Rights legislation, and was the leading sponsor in the House of Representatives for CS/CS/HB 109, which led to the formation of the Florida Commission on the Status of Women. She was a champion of Florida's 1989 hate crimes law, which became a model for the nation. After retiring from the legislature in 1994, Ms. Gordon worked for FIU as an Assistant Vice-President until 1999.

2011 Scholarship Winner

Chelsea Klaiber

Chelsea Klaiber is a Women's Studies and Journalism double major. She works as a peer educator for the FIU's Victim Advocacy Center giving presentations on sexual assault, domestic violence, and stalking and as a Resident Assistant at the Biscayne Bay campus. Chelsea's goals are to "educate the masses" about issues relating to women through her work in journalism and to, in a way, even out the playing field in an industry that is "notoriously sexist". Chelsea has already started making a difference in educating others about Women's issues and will continue to have an impact in the community speaking out for women's rights and on issues of sexual and domestic abuse.



Left to Right: 2011-2012 Elaine Gordon Scholarship winner Chelsea Klaiber; Women's Studies Director, Dr. Laurie Shrage; 2001-2002 Elaine Gordon Scholarship winner, Maria Ortiz; Elaine Gordon's daughter, Pam Gadinsky; granddaughter, Brooke Gadinsky; and son, Brian Gadinsky.

2010-2011 College of Arts and Sciences Academic Excellence and Outstanding Service Award Recipient:

Lis-Marie Alvarado

A little information about our award recipient:

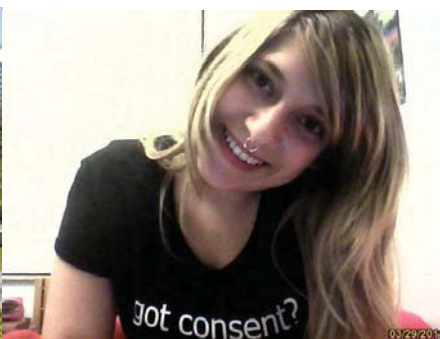
Lis-Marie is the membership education coordinator and women's organizer with WeCount! in Homestead, FL where they organize immigrants for their rights through direct-action, advocacy, and cultural preservation. She is also a coordinator/facilitator with Seed305, an alternative political education school that uses popular education to create social consciousness and action in Florida

with a focus on gender. In addition, Lis-Marie volunteers and supports many other local, national, and international grassroots organizations such as PowerU, Coalition of Immokalee Workers, and the National Latina Institute for Reproductive Health and different academic honor societies. She is also the founder and host of Madre Tierra (Mother Earth) radio show, which airs music and people from cultures that respect the earth on FIU student radio.

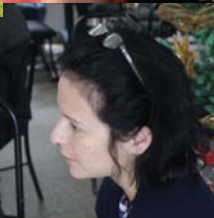
Women's Studies Undergraduate Student Achievements



Maria Barbaran (Sociology/ Women's Studies, European Studies Certificate, Portuguese Minor). She participated in the Vagina Monologues and AIDS Walk Miami and did an internship with Planned Parenthood of Florida.



Chelsea Klaiber (Journalism/Women's Studies). Chelsea is a Peer Educator for the Victim Advocacy Center and she teamed up with the FIU Women's Center to help out with Take Back the Week.



Nataly Cajamarca (left) (Sociology/Women's Studies) Provides community service to the North Miami Beach Public Library.

Alecia Vasciannie (Nursing, Women's Studies Certificate) Awarded an Academic Excellence Scholarship.

2010-2011 WS INTERNS

The following is a list of students and the sites or projects they worked on where they gained practical application experience and opportunities outside of classroom learning.

Fall 2010

Natalia Ortiz, Women's Park
Site supervisor: Lisa Fernandez
Worked with park manager on the "In the Company of Women" Award event.

Spring 2011

Jennifer Fuentes, Alternative to Violence Project
Site supervisor: Dr. Dawn Addy
Worked closely with women of the Homestead Correctional Institute; Designed a program to teach inmates about alternatives to violence.

Erika Gomez, XX Radio
Site Supervisor: Dr. Laurie Shrage

Natalia Ortiz, Women's Park
Site supervisor: Lisa Fernandez
Worked with park manager on the "In the Company of Women" Award event.

Adriana Bittar (Advertising and Women's Studies Cert). Currently employed with a cosmetics company that donates money to the prevention and resources for helping young women who battle with domestic violence and abuse in relationships.



Maria Murriel (Religious Studies, Women's Studies Certificate, and Journalism Minor). Maria was awarded the Elaine Gordon Scholarship for the 2010-2011 Academic Year.

WOMEN'S STUDIES ALUMNI ACCOMPLISHMENTS

zoila

Clark, Zoila (Spanish Ph.D/Women's Studies Certificate, 2010) recently published a book about Latin American feminism: "La sexualidad femenina: reconceptualización surrealista y postmoderna por Cristina Escofet e Isabel Allende". UP of America, October 16th 2010. It comes out in English next year. She writes: "I would not have been able to do it without the graduate courses I took at the Women Studies Center at Florida International University." This year she is organizing the 1st International Hispanic Conference of the Day of the Dead: / "Monsters, Ghosts, Devils, & Orishas in Latin American & Peninsular Literature, Film, and Music" between FIU and FMU.



jaclyn

Heyen, Jaclyn (Music Technology/Women's studies Certificate, 2010) Jaclyn Heyen is the technical director at Deep Listening Institute in Kingston, NY. She works on the Adaptive Use Musical Instruments Project which has been presented at the Guelph Jazz Festival, Music Therapy National Conference, and NJIT and received a grant for training therapist, teachers and staff how to use AUMI from US Artists. She has also started a new multi-media work called BlueRoad which are video/audio recordings of her process and rides on her Harley. Recently she co-founded We Be Three Media in the Hudson Valley.

ivette

Duarte, Ivette (Anthropology/Sociology/Women's Studies Certificate/Psychology minor, 2011) was awarded the 2011 Grant-in-Aid, offered by Equal Opportunity Programs (FIU) and took Spring 2011 off to finish her Master's Degree in Higher Education Administration which she finished. She is now certified to administer and interpret the Myers-Briggs Personality Type Indicator and to administer and interpret the Strong Interest Inventory.

joanna

Vasquez, Joanna (Psychology/Women's Studies, 2007) is a Special Education Teacher in Baltimore, MD and has a Master's from College of Notre Dame and Certificate from Johns Hopkins.

christina

Lalama, Christina (Psychology/ Women's Studies) is a Licensed Mental Health Counselor at Family Counseling Services of Greater Miami. She is also the Program Coordinator for the Sexual Violence Prevention Program. In addition, she is the President of the Miami-Dade Chapter of the Florida Association for Play Therapy.





stephanie

Lozada, Stephanie (Psychology/Women's Studies, 2010) graduated with a double major in Psychology and Women's Studies in December 2010. After that, she has been working in her parent's business and saving money to open up her own jewelry business. She has come up with a business plan and has talked to investors, as well as researched business expenses and other business related information. She looks forward to becoming a business owner and thinks she will be very successful.

kelly

Blanchard, Kelly (Women's Studies/Political Science, 2005) currently resides in Arlington, VA where she is a Family Services Assistant-Home Visitor for the Fairfax County Public Schools' Early Head Start program. She provides in-home parent and early childhood development education to low-income, at-risk families in hopes of ensuring "Every Child Ready to Learn" when kindergarten begins. She is a 2013 Human Development, Master's of Science candidate at VA Tech, studying Adult Learning and Human Resource Development.

francesca

Menes, Francesca (Political Science/Women's studies/National Security Studies Certificate/Philosophy minor, 2008) is a Community Organizer with the Florida Immigrant Coalition (FLIC). Her primary responsibilities are coordinating the Florida Wage Theft Task Force and building the capacity of FLIC's Afro-Caribbean member organizations. For 2 years, she was the coordinator of a national network of organizations fighting for the designation of Haiti for Temporary Protected Status. Additionally, she is the FLIC representative for the Haitian-American Grassroots Coalition and the National Black Immigrant Network (BIN). She is also a member on the Board of Directors of South Florida Jobs with Justice and was recently appointed by Miami-Dade County Commissioner Sally A. Heyman for a 4 year term on the Commission for Women.



kristen

Rosen, Kristen (Psychology/Women's Studies, 2005) completed her Master of Public Health degree at FIU in Spring 2010 and is currently working as a study coordinator in the Department of Psychiatry at University of Texas Health Science Center at San Antonio.

christina

Mainville, Christina (Psychology/Women's Studies Certificate, 2010) is currently working as a Psychosocial Rehabilitation Counselor at Fellowship House. She is also working on her Masters in Social Work at Barry University.

student activities & achievements

The Women Studies Student Association (WSSA) at FIU had another productive year. Below are just some of the events and activities that WSSA hosted or participated in.



Fall 2010

Movie Screenings: Throughout the academic year, WSSA hosted movie nights with Women's Studies Professor Maya Boutaghou who provided us with insight and answered questions about each film. Whether it was a female director or a women's issue, all films somehow revolved around women. Screenings were held twice a month and some of the films included: *Bordertown*, *Mississippi Masala*, *Not Without my Daughter*, *Persepolis* and *Agora* among several other great films.

Screening of *Business of Being Born with a Midwife:*

WSSA had the opportunity to speak to a midwife after watching the *Business of Being Born*. The film interlaces intimate birth stories with surprising historical, political and scientific insights and shocking statistics about the current maternity care system in the U.S. After the film we had a Q & A.



At the Susan G. Komen Breast Cancer Walk



WSSA visited **Miami Maternity Center**. We got to see the entire facility which consists of a clinic to do patient check-ups, the labor rooms and the center's garden.



Lupe learning from midwife Jamarra.

We also visited the volunteered the **Miami Maternity Center**, participated in the **Susan G. Komen Breast Cancer Walk**, and volunteered for **Farmworker's Association in Homestead**.

Spring 2011

Death of a Bride Info Session: WSSA walked the FIU campus in wedding gowns to promote College Brides Walk, a march to raise awareness about domestic violence, with its founder Josie Ashton. Together we passed out flyers and informed the FIU community about the College Brides Walk and about domestic violence in our community. WSSA also participated in the first annual **College Brides Walk** on February 11, 2011.



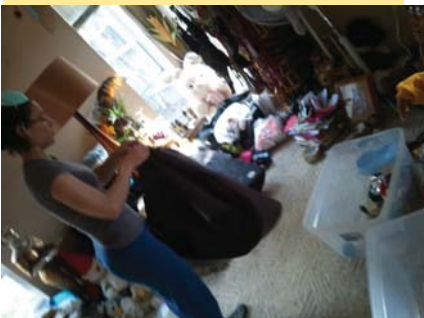
Death of a Bride Info Session at FIU.



At the College Brides Walk in February.



An Evening with Eve Ensler: WSSA had the opportunity to meet the author of the *Vagina Monologues* at Books & Books in Coral Gables.



The Rios Project. Cleaning up.

WSSA also participated in the **AIDS Walk, Take Back the Week** (a spin off of Take Back the Night in previous years), and organized a community service project for victims of domestic violence, which they endearingly named "**The Rios Project.**"

student activities & achievements

2011 VAGINA MONOLOGUES

2011 V-DAY PRODUCTION TEAM

Director: Adriana Rodriguez
Producer: Gabriele Swingler
Organizer: Guadalupe Juarez
Technical Crew: Ladies of WSSA

2011 BENEFICIARIES:

Total proceeds of WSSA's 2011 production of the Vagina Monologues : \$3300.
V-Day \$750
FIU Victim Advocacy Center \$750
The Lodge House \$750
The Rios Project \$1050

SPECIAL THANKS

A sincere thank you to everyone who believed in this event and helped make it a reality for another spectacular year. A thank you as always to the Women's Studies Center for the ongoing support, nurturing, and fierceness they provide year after year: Dr. Laurie Shrage, Paula Powell and Christi Navarro.

Thank you to the wonderful women of the 2011 cast for the grace, attitude, and humor they have poured into this year's show. Their dedication to this production as well as

their hunger for justice only compliment the talent they display on stage. The respect and care they have given to each monologue is a beautiful reflection of the V-Day movement which continues forward because of women like these.

Last but certainly not least, thanks to all of you vagina warriors out there. Thank you to all the men and women who fight against rape and female genital mutilation. Thank you to everyone who supports ending gender violence in war-torn and under-served areas of the world. Thank you to friends and colleagues who believe that being women does not have to mean paying a terrible price for the right to our bodies. Truly, we thank all of you audience and supporters for wanting to make our city, our school and our homes a vagina-friendly place.

MONOLOGUES

Introduction: Abby Araya, Claudia Camas, Esra Erdogan
Hair: Guadalupe Juarez
The Wear and Say Lists: Abby Araya, Claudia Camas, Esra Erdogan
The Flood: Carolina Perez
Vagina Workshop: Abby Araya
Vagina Happy Fact: Esra Erdogan
Because He Liked to Look At It: Sara Conklin
Not-So-Happy Fact: Esra Erdogan
My Angry Vagina: Sara Conklin, Carolina Perez, Natalie Levy
My Vagina Was My Village: Odette Barrientos
Say It: Claudia Camas, Guadalupe Juarez, Adriana Rodriguez
Reclaiming Cunt: Julie Ann Haase
A six-year-old-girl was asked: Gabriele Swingler
The Woman Who Loved to Make Vaginas Happy: Natalie Levy
I Was There In The Room: Julie Ann Haase
Narrator: Adriana Rodriguez
2011 Spotlight Monologue: Myriam: Gabriele Swingler

Viva Vaginas!



student activities & achievements



2010-2011 Executive Board

President – Michelle Perez
Vice President – Jacqueline Nusz
Treasurer – Sarah Otero
Secretary – Angelo Santa-Lucia
CSO Representative – Chaundra Whitehead
Conference Chair – LaToya Eaves

Women, Sexuality, and Gender Student Association

During planning meetings in Summer 2010, the members of WSGSA decided to change their official name from the Women's Studies Graduate Student Association to Women, Sexuality, and Gender Student Association. In doing so, WSGSA sought to openly support broader perspectives of scholarly and personal interests through naming the study of sexuality and gender issues as integral aspects of what we do.

2010-2011 WSGSA Events

October 2010

- WSGSA members attended the Wynwood Art Walk and participated in a night of culture in support of local artists.
- WSGSA co-sponsored and attended Dr. Aurora Morcillo's book release - *The Seduction of Modern Spain: The Female Body and the Francoist Body Politic*.

November 2010

- WSGSA collaborated with Department of History Graduate Student Association for a lecture- "Family and Academia, Balancing Personal and the Professional"
- WSGSA presented their 10th annual conference, Expanding Horizons, in support of the organization's new focus on women, sexuality, and gender issues.

February 2011

- WSGSA Collaborated with SAGGSA for a professional development presentation by Dr. Matthew Marr – "How to get Published".

March 2011

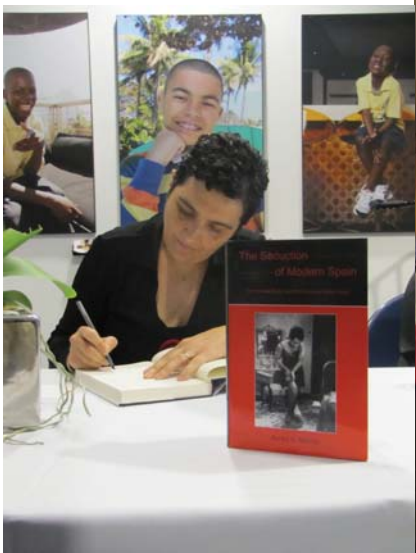
- WSGSA members volunteered with WSSA's production of *The Vagina Monologues*
- Chaundra Whitehead, Paula de la Cruz-Fernandez, and LaToya Eaves made presentations at the Annual Graduate Scholarly Forum, sponsored by the Graduate Student Funding Committee/SGA and part of Graduate Student Appreciation Week. LaToya Eaves won an award for her presentation based on high evaluator feedback.

April 2011

- WSGSA co-sponsored a Grads Keller with the Modern Language and College of Education's graduate student organizations as part of Graduate Student Appreciation Week.



Above: WSGSA students with Lilly Ledbetter (second left) at her lecture, "The Lilly Ledbetter Fair Pay Act" on October 17th. **Top Right:** LaToya and Chaundra volunteer at WSSA's production of the Vagina Monologues. **Right:** WSGSA members (left to right), Chaundra Whitehead, Paula de la Cruz Fernandez, and LaToya Eaves at the WS Gala in March. **Below:** WSGSA out to support Dr. Aurora Morcillo at the book signing of her latest book, *The Seduction of Modern Spain*.



student activities & achievements

Expanding Horizons

The 10th Annual Women, Sexuality, and Gender Student Conference
A Presentation of Student Research on Women's, Sexuality, and Gender Issues
Monday, November 15, 2010



Some snapshots from the 2010 WSGSA conference. The theme of the conference, "Expanding Horizons" was to compliment the association's name change to Women, Sexuality, and Gender Studies Association.

2010 CONFERENCE PRESENTATIONS

GENDER AND TECHNOLOGY

The Impact of Sexualized Media Messages about Women, and its Relationship to Violence and Learning: A Review of Literature, Christina M. Lantigua, English

On Porn Categories: Latinas in the U.S. Porn Industry, Elisa Medina-Rivera, Latin American and Caribbean Studies

Transgressing Boundaries: Deconstructing Gender, Sexuality, Architecture, and Social Institutions through OMA's Patio Villa, Andrew Santa Lucia, FIU Alumnus; Angelo Santa Lucia, History

Girl Spotting: The Performance of Female Identity in the Virtual Gaming Community of World of Warcraft, Connie Viamonte, Global and Sociocultural Studies

GENDER REDISCOVERY

Elizabeth Gurley Flynn and Frances Willard, Reclaiming Women in American History, Amal Ardito, Women's Studies

The Disappearance of the Female Oriate in Afro-Cuban Lucumi Tradition, Maria Concordia, Latin American and Caribbean Studies

Hot'bff the Press!: The Presentation of Women Athletes in Media, Nicole Mixson-Perez, Global and Sociocultural Studies

INSTITUTIONALIZING WOMEN

Young Women & the MENA: Sexuality and Reproductive Health Challenges in Contemporary Morocco, Christi Navarro, Public Health

Narratives of Experiences Teaching in a Woman's Prison, Chaundra Whitehead, Adult Education and Human Resource Development

MIGRATION AND TRANSNATIONALISM

Daughter of Fortune: Challenging Marital Traditions in North and Latin America during the Gold Rush Era, Lucia Baez, Global and

Sociocultural Studies

Negotiating Gender in Motion: Bengali Transnational Extended Families' Influence on Migrants' Spousal Relations, Mayurakshi Chaudhuri, Global and Sociocultural Studies

Romance Tourism: Love and Travel, Julia Meszaros, Global and Sociocultural Studies

A QUEER IDEA

"Nothing in Law Here to Make it a Crime": Miami Renegotiates "Sex" & "Gender", Julio Capo, History

Missed Connections: Queer Black Women, Rurality, and the South, LaToya E. Eaves, Global and Sociocultural Studies

Dominance and Submission in Adult Relationships, Carolyn Meeker, Adult Education and Human Resource Development

Breaking Binaries & the Demographic Continuum, Jackal Tanelorn, Global and Sociocultural Studies

POSTER PRESENTATIONS PARTICIPANTS

Exploring College Women's HPV and HPV Vaccination Attitudes and Beliefs, Ruth Gonzalez, Psychology; Diana Garcia, FIU Alumnus

From Princesses to Frag Dolls: A Review of Women in Gaming, Elisa Melendez, Global and Sociocultural Studies

Description of Hispanic College Men's Knowledge Towards HPV and HPV Vaccination, Jennifer Sanchez, Psychology

HIV and STD Sexual Risk Differences by Gender and Ethnicity Among Migrant Workers, Nancy Shehadeh, Public Health

The Re-Construction of Race, Gender, and Sexuality Through Performance in Post-Colonial London, Synatra Smith, Global and Sociocultural Studies

Women's Studies Advisory Board & Fundraising Activities

The FIU Women's Studies Center Board of Advisors continued to increase its support of the program during its fifth year. Together, these distinguished women contributed greatly to the success and growth of Women's Studies. The Board was established in Fall 2003. The term of membership is two years and the members of the Women's Studies Board of Advisors assume the following responsibilities:

- ♦ Provide advice to the Women's Studies Center, makes linkages to individuals and business contacts in the region, nationally, and internationally, helps develop strategic and long range planning, provides community perspectives and perceptions.
- ♦ Actively seek funding for Women's Studies by participating in solicitation, donor prospecting, generating and facilitating contacts, attending ongoing development activities and events, and cultivating others.
- ♦ Provide financial support through donations and helps obtain donations. Members of the Founding Board will make an initial annual donation of \$1,000 annually (i.e., to give or get donations).
- ♦ Take time to become informed about the Women's Studies Center, and promotes the center through daily contact. May assist with public sector lobbying. Helps project the Center programs regionally and nationally.
- ♦ Attend board meetings; is available for consultation by appointment, by phone, or email on a pre-notified basis.
- ♦ Cultivate and recommend qualified people who have the potential to be future members of the Board.

2010-2011 WOMEN'S STUDIES BOARD OF ADVISORS & FRIENDS OF THE BOARD

Mary Lou Pfeiffer (Chair) served on the Advisory Board in the College of Arts and Sciences at FIU and the Board for the FIU Center for Spirituality as well as the Women's Studies Board of Advisors. She was the contributor of the Helen J. Dunnick Endowment to teach American Indian Studies at FIU. She received a LL.M. in Intercultural Human Rights from St. Thomas University School of Law and a Master's Degree in Religious Studies from FIU. She is the owner and operator of Pfeiffer Originals art glass studio, President and partner in Caressa-me, an aromatherapy company, and a recipient of the FIU Alumni Torch Award.

Marjorie H. Adler is Human Resources Director for the City of Coral Gables (2004-present). Previously, she was Chief Personnel Officer of Human Resources for the Miami-Dade County Public Schools (2003-2004) and for the school district of Philadelphia (PA) (1997-2002). She has extensive management experience in the private sector as well. Her areas of expertise include labor relations and recruitment strategies, organization development, and risk management. Previously a 40-year resi-

dent of Philadelphia, she was very active in the wider community, particularly in women's issues and cultural affairs.

Carol Alexander is Founder and President of Carol Alexander, C.P.A., PA, a public accounting firm serving the South Florida business community, providing income tax planning and preparation as well as business evaluations. She serves on the boards of several professional and not-for-profit organizations. She also served two years as Club President of the Rotary Club of Miami Sundown. Among her personal interests are fitness, music and art.

Maria Anderson is the Vice Mayor & Commissioner, City of Coral Gables, FL. She is a board member of the Urban Environment League and a representative for the Coral Gables Chamber of Commerce. She spearheaded a successful community visioning process for the revitalization of downtown Coral Gables, co-sponsored with the UM School of Architecture.

Gayle Ann Bainbridge has made a career as an insurance agent in Coral Gables after her graduation

from FIU in 1975 with a Bachelor of Arts in English. She currently is Vice President of Elliott, McKiever & Stowe, Inc., insurance company. She serves on the Boards of the FIU Alumni Association, UM Friends of Music, and was Chairman of the Coral Gables Chamber of Commerce. Ms. Bainbridge was the 2006 recipient of the Thelma Gibson Excellence Award for Leadership from the Miami-Dade Women's Chamber of Commerce. Her hobbies include traveling, gardening and reading.

Elizabeth Baker is a lawyer with Baker & Cronig, LLP (family, real estate, banking and business law). She has been continuously certified by the Florida Bar in Marital and Family Law. She has been actively involved in Safespace Foundation, a private charity which supports the Miami-Dade County shelters for battered women and their children, for over 25 years. In 2006, she was recognized by the Florida Association for Women Lawyers, Miami-Dade County chapter, with the Mattie Belle Davis Award. Her personal interests include the study of Shakers, a utopian religious sect, and collecting vintage costume jewelry.

Annie Betancourt epitomizes the consummate change agent. She is a graduate of University of Miami and attended the Senior Executive Program at Harvard's Kennedy School of Government. Also, Ms. Betancourt is a former member of the Florida House of Representatives (1994-2002) and Democratic nominee for Florida's 25th Congressional District. Her experience allowed her to work across diverse political, social, cultural and economic lines. The time she spent in the Florida Legislature was highly productive because she championed laws that foster job opportunities and economic development, promoted changes that facilitate access to higher education through scholarships and fought public corruption in several fronts along with law enforcement agencies. In 2002, as the Democratic nominee for the new 25th Congressional District in Florida, Annie was not afraid to address thorny issues that had impacts at the national and international levels, including a revision to current U.S. policy on Cuba. Betancourt has overcome adversities herself such as breast cancer and losing her husband. Today she lives a happy life in Coral Gables with her daughter Rynne.

Lynda Esserman is a Women's Studies major and benefactor. She was the hostess of the Spring 2008 Women's Studies gala.



Board members Marjorie Adler and Margaret McCaffery.

Ann (Annie) Goodrich retired from FIU recently but is still active with Women's Studies and at the University. She received numerous awards during her many years of service, including the Outstanding Employee of the Year Award from FIU in 1988 and 1995 and the FIU United Way Volunteer of the Year award in 1996. She was the University of Miami Medical School Woman of the Year in 1990 for her outstanding efforts in building the Ronald McDonald House at Jackson Memorial Hospital. The FIU Executive Council in 1997 named an award in her honor, the Ann H. Goodrich Volunteer of the Year Award.

Evelyn Langlieb Greer is an attorney with Hogan, Greer & Shapiro, P.A., and was formerly elected as the Miami-Dade County School Board Member from South Miami-Dade in 2004. She was the founding mayor of the Village of Pinecrest from 1996-present. Ms. Greer was also President of Greer Properties, Inc., a Director of City National Bank of Florida, N.A. from 1998-present, a Trustee of Barnard College, Columbia University, NY, from 1995-2004, the Vice Chair for the Board of Visitors, Columbia Law School from 1996-present, Director of Our Kids, Inc., the Miami-Dade foster care umbrella organization, and a Director of the Miami Performing Arts Center.

Margaret McCaffery was born in Cuba and left in the early 60s, settling down in New York City. Her last job was as Gender focal point at the United Nations. When she moved to Miami, she joined Soroptimist International (SI) - an NGO with whom she had



Yesim Darici with Senior Vice President for External Relations, Sandra Levy-Gonzalez, at WS wine-tasting.

worked with at the UN. During a Soroptimist meeting in 2007, Margaret came across a play called "Body & Sold," based on interviews of sexually exploited American children. The play surprised her and made her purchase the rights with the idea of staging it in Miami. However, the play was only produced thanks to the help of FIU Professors Aurora Morcillo and Laurie Shrage, who introduced her to Phillip Church, FIU's Theater Director. The play was performed at FIU on January 11, 2010, to observe the National Day of Awareness about Trafficking. Margaret arranged to have a public forum on Trafficking before the play. Next stop for "Body & Sold" was the Kennedy Center in Washington, D.C., on January 11, 2011, with the same FIU actors joining those of McKinley Tech High School. This summer, Phillip Church staged "Body & Sold" in England, with FIU student performers joining those of Southampton Solent University and Kingston University, London. My supporting role has been one of contacting local Soroptimist clubs in Alexandria, VA., and in Kingston, London, gently suggesting to them finding speakers for the public fora and helping provide accommodations for the students. At the end, FIU Dean Brian Schriener, CARTA, worked miracles and found ways of shouldering the travel expenses. The experience of the FIU students about "Body & Sold" changed from first reading the play as "just another drama assignment", (as I was told when I attended the play at Kennedy Center), to them becoming spokespersons against Human Trafficking. Phillip Church inspired the students to research this modern form of slavery, so with their knowledge, idealism, vision and energy they could play a major role in ef-

fecting social change. Margaret's contact with the FIU drama students inspired her to reach out to the Women Studies' students, and to encourage them to apply to our annual Soroptimist scholarship - awarded to students who provide the primary source of financial support for their families. However, the applications received from FIU were not complete, and this year's award went to a UM student, who also received a laptop from co-sponsor Jackson Hewitt Tax Service.

Maria Millheiser is a benefactor and Women's Studies alumna. Her early career was in nursing. After raising a family, she returned to FIU to complete her undergraduate degree in 2006. She is committed to helping other women gain the knowledge they need to grow and thrive, as well as to protect themselves.

Diana Parker is Director of Office Brokerage at Cushman & Wakefield of Florida, Inc. Cushman & Wakefield is the world's largest privately held real estate services firm. It delivers integrated solutions by actively advising, and managing on behalf of Landlords, tenants, and investors through every stage of the real estate process.

Pat Klock Parker, Broker-Salesperson, has been with The Klock-Parker Real Estate Group at Coldwell Banker since 1977. She was a top Real Estate Broker-Agent, selling homes in Coral Gables, Coconut Grove, Pinecrest, South Miami and East Kendall. She was a charter member of the Master Broker's Advisory Board of the top 200 agents in Dade County and the International President's Elite top 5% of Real Estate Agents in the Country. She was a past Board of Directors member of the Miami Choral Society and past parent board member of Carrollton School of the Sacred Heart. She and her husband are actively involved at Epiphany Parish.

Carolina Rendeiro is Founder and CEO of Business Centers International in Coral Gables and Brickell, a concierge-type service that provides customized workspaces, offices, and lobby and conference rooms that create a luxurious, high tech, executive business environment. She is the Chairman-elect of the Coral Gables Chamber of Commerce.

Suzanna M. Rose is the Director of the School of Integrated Sciences and Humanity (SISH) and Professor of Psychology & Women's Studies in the College of Arts & Sciences at FIU. She previously served as Chair of Psychology and as Director of

Women's Studies at FIU. Prior to coming to FIU, she was Professor of Psychology and Director of Women's Studies at the University of Missouri-St. Louis. Dr. Rose has published extensively on issues related to women and gender, including professional networks, career development, leadership, and personal relationships. Dr. Rose has been a member of eight editorial boards for journals in psychology and women's studies and also served on APA grant panels. More than thirty universities nationally and internationally have consulted with her concerning strategies for recruiting and retaining women faculty in science and engineering.

Joyce Shaw Peterson is Associate Dean of the College of Arts and Sciences at the Biscayne Bay Campus. She is a long-term friend of Women's Studies, having served on the committee that recommended the creation of a Women's Studies Program for FIU. At the end of the summer she will be stepping down from her administrative position and embarking on a sabbatical. She looks forward to returning to full time teaching and research in the Department of History and frequently offering Women's Studies History courses.

Katy Sorenson has been representing District 8 since 1994, has been an outspoken advocate for her

community and all of Miami-Dade County. Commissioner Sorenson has worked diligently to enhance the quality of life for South Miami-Dade through wise economic and growth management policies, crime prevention initiatives, and protection of the region's environmental resources. She has also been a staunch advocate for human rights, a champion of regional cooperation, a leader in child welfare issues, and a promoter of the arts. Commissioner Sorenson is the Chairwoman of the Budget, Planning, and Sustainability Committee, Vice Chair of the State Intergovernmental Affairs Subcommittee, and is a member of the Housing & Community Development, Recreation, Culture & Tourism, and Transit, Infrastructure & Roads committees of the Board of County Commissioners.

Helen Venero has been in the scientific instrumentation industry for 29 years. She currently is president of VTI Corporation, based in Hialeah, Florida, a small company that designs, manufactures and markets scientific instruments all over the world. Venero's educational background reflects her many interests over the years: Spanish literature, social work, and business. The importance of entrepreneurial skills and the support and mentoring of women in business has been of great interest.

THANK YOU, WOMEN'S STUDIES DONORS

Women's Studies donations fund scholarships, student travel to professional conferences, and outreach activities. The Friends' donations were greatly appreciated. Below are the friends we received donations from for the 2010-2011 Academic Year.

Dawn Addy
 Marjorie Adler
 Glenda Belote
 Yesim Darici
 Asia Eaton
 Gloria Emerson
 Catherine Fahringer
 Howard Futterman
 Rosa Henriques
 Joan Hill
 Marilyn Hoder-Salmon
 Suzanne Koptur

Janet McAliley
 Margaret McCaffery
 Maria Perez
 Joyce Peterson
 Mary Lou Pfeiffer
 Paula E. Powell
 Rosario Roman
 Suzanna Rose
 Laurie Shrage
 Dionne Stephens
 Nancy Van Den Bergh

FALL 2010 WOMEN'S STUDIES EVENTS

SEPTEMBER

- 22 **Miami-Dade County Commission on the Status of Women Meeting**

OCTOBER

- 13 **"Emergence, Evolution and Nature"**
Lecture by Urusla Goodenough, Professor, Biology, Washington University
- Lecture by Lilly Ledbetter**
- 17 *Co-sponsored by the American Association of University Women (AAUW) & Women, Sexuality, Gender Studies Association (WSGSA)*
- 29 **"The Seduction of Modern Spain: The Female Body and the Francoist Body Politic"**
Book signing by Aurora Morcillo, Associate Professor, History & Women's Studies

NOVEMBER

- 15 **"The Secret Confessions of Anne Shakespeare"**
Lecture by Arliss Ryan, Author
- "Same-sex Marriage in a Global Frame"**
- 16 Tuesday Times Roundtable by Laurie Shrage, Director, Women's Studies/Professor, Philosophy



Top left: Members of the MDC Commission on the Status of Women: Viviana Jordan, Tiesha Taylor, Maria Roberts, Anita McGruder, and Grace O'Donnell. **Bottom left:** Dr. Dawn Addy, Mary Whitehead, and Dr. Shrage with Lilly Ledbetter. **Top Right:** Laurie Shrage with Meri-Jane Rochelson at the Lilly Ledbetter event. **Bottom Right:** Suzanna Rose and Lilly Ledbetter.

WOMEN IN MOTION: FITNESS, SPORT, AND THE FEMALE FIGURE at the Frost Art Museum

Can women achieve fitness and athletic prowess while conforming to the social norms of femininity? This exhibition explores the images of physically active women produced by governments, fitness advocates, advertisers, and artists in Europe and the United States during the first half of the twentieth century. Drawn from The Wolfsonian's collection, the exhibition incorporates a variety of media, from posters and magazines to decorative and fine art. Join us for the exhibition opening in the Wolfsonian Teaching Gallery at the Frost Art Museum. The exhibition is co-curated by FIU faculty members Laurie Shrage and Dionne Stephens.



Fit Versus Feminine: Exhibition Explores Paradox

Reprinted with permission from *ePropoganda* (The Wolfsonian-FIU), January 2011.

How do we view the bodies of women who are tall and strong and fast—do we interpret them in a positive way, or as not appropriately feminine? If women athletes do not conform to traditional norms of femininity, what are the consequences? Do successful female athletes enjoy the rewards often bestowed on male athletes, and does the success of women in sports translate into success for women in other social spheres? These are some of the questions posed by the exhibit *Women in Motion: Fitness, Sport, and the Female Figure*, according to co-curator Laurie Shrage, professor of Philosophy and director of the Women's Studies Program at FIU. The exhibit, drawn from The Wolfsonian's collection, was on view in The Wolfsonian Teaching Gallery at the Frost Art Museum on the Modesto A. Maidique Campus at Florida International University from January 26 through April 24, 2011. Dionne Stephens, assistant professor of Psychology and African and African Diaspora Studies, also co-curated the exhibit, as did Jon Mogul, The Wolfsonian's coordinator of academic programs. Additional assistance was provided by Christi Navarro, a graduate assistant at the Women's Studies Program, who coordinated aspects of the exhibit and continues to work on public programming.

The materials on view include posters, magazines, prints, books, and ceramics produced by governments, fitness advocates, advertisers, and artists in Europe and the United States during the first half of the twentieth century. "Many of the images invite the viewer to focus on the sexual and feminine appeal of the athletes, rather than on their athletic skills or activities," explains Shrage. Both curators emphasize that issues raised by the historic material in the exhibit are relevant to today's society. "Professional and college sports are tremendously influential in terms of how particular groups in our society are perceived—this is true for women; for African, Jewish, and Asian Americans; for

Latino/as; and for lesbians and gay men," Shrage says. Stephens offers a contemporary parallel: "Anna Kornikova is one of the highest paid female athletes in terms of endorsements, but she's not the most successful. Women's bodies are so central to their success. This is not something new. It's been going on for generations."

In addition to exploring ambivalence related to women's physical activity, the exhibit also conveys the idea of physical fitness as a social obligation, as well as an individual good. *Women in Motion* includes political propaganda celebrating "female fitness in relation to national objectives, such as reproducing and expanding the population," Shrage says.

Shrage and Stephens spent several months working on the exhibit with the guidance of Mogul. It was the first curatorial experience for both professors. "This was very exciting for me. There aren't a lot of opportunities like this for university faculty to engage with a museum collection. It is quite rare," notes Stephens. Both professors will integrate the exhibition into their teaching this semester. "I hope the exhibit will help students make connections between the objects on view and broader social issues, and also make connections between what they learn in the classroom and how it relates to our world," says Stephens. She will teach two class sessions of her course *Psychology of Women* at the Frost and the exhibit will be tied to a course assignment; Shrage will incorporate the exhibit into an assignment for her online course *Gay and Lesbian Across Societies*. In addition, during the exhibition the curators will organize talks, panels, and films—for information on public programming related to *Women in Motion*, check the Women's Studies Center website, which will list the programs as they are scheduled.

SPRING 2011 WOMEN'S STUDIES EVENTS

JANUARY

- 25 **"Trajectories of Development in Transition Economies since the Fall of the Berlin Wall"**
Lecture by Pasquale Tridico, Assistant Professor of Economics, University of Roma Tre & 2010-11 Fulbright Scholar, New York University
- 26 **"Women in Motion: Fitness, Sport, and the Female Figure" - Exhibit Opening**
Co-sponsored with the Wolfsonian-FIU Museum
- 28 **"Outside the Frame: Gender, Mourning and Loss in Process Photography"**
MEUCE Lecture by Maria Zarzycka, Assistant Professor, Gender Studies, Utrecht University

FEBRUARY

- 3 **"Trafficking in Women: A Global Challenge in a Regional Context"**
Lecture by Emek Ucarer, Associate Professor and Chair, Dept. of International Relations, Bucknell University
Co-sponsored with the Miami-Florida European Union Council of Excellence
- 8 **"A Life's Work: Eleanor Galt - Florida's First Female Physician"**
Lecture by Prof. Emeritus, Dr. David Lee
- 10 **Documentary Film: "Playing Unfair: The Media Image of the Female Athlete"**
Followed by panel discussion - Moderator: Cecile Houry, Honors College
- 10 **"Housed Under Glass: A Story of Desire, Repression, Loss & Healing"**
Lecture by Maria Luisa Ortega Hernandez, Author & Associate Professor, Community College of Philadelphia
Co-Sponsored by LACC and Modern Languages
- 11 **Visit with delegation of Iraqi Women Leaders**
Co-sponsored with the Miami Council for International Visitors and the Middle East Studies Center (SIPA)

MARCH

- 3 **"In a Woman's Body: Contemporary Representation of Women in Sports"**
Lecture by Dionne Stephens, Associate Professor, Psychology
Co-sponsored with The Wolfsonian-FIU Museum
- 8 **"The Bulletin de l'Union des Femmes Coloniales (BUFC): Early Feminism at the Service of the Belgian Colonial Ordering of Things in the Congo"**
Lecture by Jean M. Rahier, Associate Professor and Director, AADS
Co-sponsored by African & African Diaspora Studies
- 29 **"Is Lingerie Football Bad for Women?"**
Panel Discussion - Moderator: Laurie Shrage, Director, Women's Studies/Professor, Philosophy



Above: Cecile Houry participates in a panel discussion about the Lingerie Football League at the Frost Museum, with Ken Jessell, Chief Financial Officer (CFO), FIU. Right: Ph.D. student (Social Work) and beach volleyball player Julie Grochowski gives her perspective on body image of female athletes at the "Playing Unfair" film and panel discussion in February.



Left: Delegation of Moroccan Women Leaders. Mrs. Amina Benomar Ghissassi is the head of the office directly supporting the Director General of Local Authorities and is tasked with increasing women's participation in local governance and has played a strong role changing in electoral law to increase the number of seats for women. Mrs. Khaldi manages the El Youssoufia District Public Library in Rabat. Mrs. Rajae Rouijel serves as the Chief of the Division of Library Collection Development at The National Library of Morocco. Ms. Saber is the main Agadir correspondent for French-language daily *Aujourd'hui le Maroc* and an active participant in the local network of women NGOs. Ms. Naima Zitan is the founder of an independent theater troupe called 'Theater Aquarium' which quickly became a social theater in 1994. In the early 2000s, she produced successful plays defending the action plan for women and later the 'Moudawana.'



Photos from the Women in Motion Exhibit at the Wolfsonian Teaching Gallery.

2011 SPRING GALA

This year, in conjunction with the School of Music, the 5th Annual Women's Studies Spring Gala focused on *Latin Women in Music & History*. Lyric Soprano, Alexandra Marie, will performed several selections from different countries in Latin America.

Women's Studies Center

School of Integrated Science and Humanity

The Women's Studies Center and the FIU School of Music cordially invite you to

"Latin Women in Music and History"

A Recital and Lecture by Alexandra Marie



Community Outreach & Extra-Curricular Activities



Gala reception prior to the performance at the Herbert and Nicole Wertheim Performing Arts Center . The reception as attended by Women's Studies staff, affiliated faculty, and WSGSA members.



Top left: Alexandra Marie performing one of her solos. She performed such selections as: •“Júrame,” “Alma Mía,” and “What a Difference a Day Makes” (México), “En este Silencio” (Cuba), “Olas y Arenas” (Puerto Rico), “O Abre Alas” (Brazil), “Fina Estampa” and “La Flor de la Canela” (Perú), “Argentine Women” (Argentina), “De España Vengo,” “El Niño Judío,” and « Don’t Cry for me Argentina”, from the Opera “Evita.” *Top right:* Dr. Laurie Shrage welcoming the audience to the gala performance. *Bottom:* Dr. Aurora Morcillo introducing Alexandra Marie .



INTERNATIONAL PROGRAMS

GENDER & WOMEN'S STUDIES ACROSS CULTURES INTERNATIONAL CONSORTIUM

The Women's Studies Center has a strong commitment to international education. In 2005, the Gender and Women's Studies Across Cultures International Consortium was launched and includes the following institutions: Universidad de Granada in Spain; Sidi Mohamed Ben Abdellah University in Fez, Morocco; Universidad Nacional de Colombia, and FIU. The primary organizers of the Consortium are:

Dr. Margarita María Birriel Salcedo, Professor of Modern History, Moderna, Universidad de Granada, Spain.

Dr. Fatima Sadiqi, Professor of Linguistics and Gender Studies, University of Fez, Morocco, and President of Isis Center for Women and Development

Dr. Souad Slaoui, Associate Professor of Linguistics, Universite Sidi Mohamed Ben Abdellah, Morocco.

Dr. Ángela Inés Robledo Palomeque, Associate Professor, Universidad Nacional de Colombia

Dr. Aurora Morcillo, Associate Professor of History and Women's Studies, FIU

Dr. Ana Maria Bidegain, Associate Professor of Religious Studies, FIU



Dr. Patil hosts visitors from Miami Council for International Visitors Program Officer.

Gemma

Joint European Master's Degree
in Women's and Gender Studies

In addition to the Women's Studies Across Cultures International Consortium, the Women's Studies Center is part of the GEMMA Master's degree in Women's and Gender Studies in the European Union. This is the first Erasmus Mundus Master's in Women's and Gender Studies in Europe. GEMMA is an interdisciplinary program that provides high quality academic education and professional competencies for personnel working or intending to work in the areas of Women's Studies, Gender Studies and Equal Opportunities across Europe.



GEMMA scholar, Jasmina Lukic talking to Dr. Addy's Intro to WS class last summer.

There are eight universities in this European consortium:

- KOZEP-EUROPAI EGYETEM (CENTRAL EUROPEAN UNIVERSITY), Hungary
- UNIVERSITÀ DI BOLOGNA, Italy
- UNIVERSIDAD DE GRANADA, Spain
- UNIVERSIDAD DE OVIEDO, Spain
- UNIVERSITEIT UTRECHT, The Netherlands
- UNIWERSYTET ŁÓDZKI, Poland
- FAKULTETA ZA PODIPLOMSKE HUMANISTIČNE STUDIJE - INSTITUTUM - STUDIORUM HUMANITATIS, Slovenia
- UNIVERSITY OF HULL, England

Partners of the GEMMA Consortium in GEMMA World include:

Prof. Dra. Norma Blazquez Graf, Feminist Research Program, Center of Interdisciplinary Research on Sciences and Humanities, *National Autonomous University of Mexico (UNAM), Mexico.*

Prof. Dra. Nora Domínguez, Interdisciplinary Institute of Gender Studies, *University of Buenos Aires, Argentina.*

Prof. Dra. Mary E. Hawkesworth, Women's and Gender Studies Department, *Rutgers, The State University of New Jersey, USA.*

Prof. Dra. Aurora Morcillo, Women's Studies Center, *Florida International University, USA.*

Prof. Lucero Quiroga, Center for Gender Studies, *Technological Institute of Santo Domingo, Dominican Republic.*

GEMMA World makes it possible for European students of the GEMMA program to visit non-European research and higher education institutions. The students receive a scholarship of 3,100 euros to spend a short research or study period (up to 3 months) in one of these prestigious third country institutions during the 4th semester of the program. **For more information on the GEMMA program, please see:** <http://www.ugr.es/~gemma/index.php>.

WOMEN'S STUDIES FACULTY



WS CORE FACULTY

LAURIE SHRAGE

Director, Women's Studies Center Professor ,
Philosophy and Women's Studies

DAWN E. ADDY

Director, Center for Labor Research & Studies;
Professor, Education and Women's Studies

FERIAL MAYA BOUTAGHOU

Assistant Professor, Women's Studies and
Modern Languages

AURORA MORCILLO

Professor, Women's Studies and History

VRUSHALI PATIL

Assistant Professor, Women's Studies and Global
& Sociocultural Studies

SUZANNA ROSE

Director, School of Integrated Science & Humanity
(SISH); Professor, Psychology and Women's
Studies

NEW FACULTY MEMBER: MAYA BOUTAGHOU

Dr. Boutaghou is an Assistant Professor in Modern Languages and Women Studies. From 2008 to 2010, she was an Andrew W. Mellon Post-doctoral Fellow at University of California Los Angeles at the Center for Cultures in Transnational Perspective, in Women's Studies and Comparative Literature. She completed her dissertation in Comparative Literature at the University of Limoges, France exploring the link between the emergence of the novel and the construction of national and cultural identity in four major colonized areas—Australia, Bengal, Egypt, and Mexico—at the end of the 19th century. She has published on both Francophone and Anglophone postcolonial female writers such as Assia Djebar, Anita Desai, and Ananda Devi. She is working on a book focused on first women intellectuals in Egypt, India, Mauritius, and Algeria: *A Poetics of the Transcultural Subject*.

WOMEN'S STUDIES ELECTIONS & FACULTY COMMITTEES

FACULTY ADVISORY COMMITTEE:

Alexandra Cornelius Diallo, History (chair)
Whitney Bauman, Religious Studies
Lynn Barrett, Creative Writing (BBC)
Meri-Jane Rochelson, English (BBC)
Ana Maria Bidegain, Religious Studies
Aurora Morcillo, Women's Studies/History
Pascale Becel, Modern Languages
Tatiana Kostadinova, Political Science
Caroline Faria, Global and Sociocultural Studies

PERSONNEL COMMITTEE:

Sarah Mahler, Global and Sociocultural Studies (chair)
Aurora Morcillo, Women's Studies/History
Ophelia Weeks, Biology

CURRICULUM COMMITTEE:

Vrushali Patil, Women's Studies/GSS (chair)
Dawn Addy, Labor Center
Maya Boutaghou, Women's Studies/Modern Languages

NOMINATING COMMITTEE:

Maya Boutaghou, Women's Studies/Modern Languages (chair)
Cristina Eguizabal, LACC
Rebecca Salokar, Political Science

AFFILIATED FACULTY MEMBERS

Clair Apodaca, Assoc. Professor, Politics & Int'l Relations
Maria Aysa-Lastra, Asst. Professor, GSS
Joan Baker, Assoc. Professor, English
Lynne Barrett, Professor, English
Whitney Bauman, Asst. Professor, Religious Studies
Pascale Bécel, Assoc. Professor & Chair, Modern Languages
Michelle Beer, Assoc. Professor, Philosophy
Ana María Bidegain, Assoc. Professor, Religious Studies
Steven Ryan Blevins, Asst. Professor, English
Kristine Burns, Assoc. Professor, Architecture and the Arts
Cynthia Chinelly, Associate Director, Writing Program and Lecturer, English
Cyra Akila Choudhury, Asst. Professor, Law
Ellen Cohn, Assoc. Professor, Criminal Justice
Alexandra Cornelius-Diallo, Asst. Professor, AADS
Carol Damian, Professor and Director, The Frost Art Museum
Yesim Darici, Assoc. Professor, Physics
Irma de Alonso, Professor, Economics
Debra Dean, Asst. Professor
Denise Duhamel, Assoc. Professor, English/Creative Writing
Cristina Eguizabal, Director, LACC
Joyce Elam, Professor, Business Administration
Juliet S. Erazo, Asst. Professor, Global & Sociocultural Studies
Asia Eaton, Visiting Scholar, Psychology
Caroline Faria, Asst. Professor, Global & Sociocultural Studies
Rebecca Friedman, Asst. Professor, History/European Stud.
Jose Gabilondo, Assoc. Professor, College of Law
Marin Gillis, Assoc. Professor and Director, Integrated Ethics & Medical Humanities, Medicine
Hugh Gladwin, Assoc. Professor, Global & Sociocultural Studies
Maria Asuncion Gomez, Assoc. Professor, Modern Languages
Aya Gruber, Asst. Professor, Law
Christine E. Gudorf, Professor, Religious Studies
Kimberly Harrison, Assoc. Professor, English
Marilyn Hoder-Salmon, Lecturer, English
Cecile Houry, Director of Student Programs, Honors College
Gail Hollander, Assoc. Professor, Global & Sociocultural Studies
Tometro Hopkins, Assoc. Professor, English
Sherry Johnson, Assoc. Professor, History
Tara Kai, Adjunct Professor, English
Jack Kleban, Adjunct Professor, Business
Suzanne Koptur, Professor, Biological Sciences
Tatiana Kostadinova, Asst. Professor, PIR
Abraham D. Lavender, Professor, Global & Sociocultural Studies
Mary J. Levitt, Professor, Psychology
Felice Lifshitz, Professor, History
Maria del Mar Logrono, Asst. Professor, History
Oscar Loynaz, Interim Director, University Health Services
Ana Luszczynska, Asst. Professor, English
Sarah Mahler, Assoc. Professor, Global & Sociocultural Studies
Peggy Maisel, Assoc. Professor, Law
Jennifer J. Matey, Asst. Professor, Philosophy
Kathleen McCormack, Professor, English
Marilyn J. Montgomery, Assoc. Professor, Educational Psych.
Michaela Moura-Kocoglu, Adjunct, Women's Studies
Aisha Musa, Asst. Professor, Religious Studies
Glenda Musoba, Asst. Professor, Ed. Leadership & Policy Studies
Joseph F. Patrouch, Assoc. Professor, History
Valerie L. Patterson, Assoc. Professor, Public Administration
Linnea Pearson, Adjunct, Religious Studies
Joyce Peterson, Associate Dean of Arts & Sciences, History
Mary Lou Pfeiffer, Instructor, The Honors College
Bianca Premo, Assoc. Professor, Department of History
Patricia Price, Assoc. Professor, Global & Sociocultural Studies
Ana Roca, Professor, Modern Languages
Meri-Jane Rochelson, Professor, English
Heather D. Russell, Assoc. Professor, English
Juan Saiz, Professor, Criminal Justice
Rebecca Mae Salokar, Assoc. Professor, Politics & Int'l Relations
Renee Silverman, Asst. Professor, Modern Languages
Linda A. Spears-Bunton, Assoc. Professor, Education
Dionne P. Stephens, Asst. Professor, Psychology/AADS
Judith Stiehm, Professor, Political Science
Andrew Strycharski, Asst. Professor, English
John Stuart, Professor, Provost Office, Architecture
James M. Sutton, Assoc. Professor, English
Paige Telan, Adjunct, Psychology
Juan Torres-Pou, Assoc. Professor, Modern Languages
Nan Van Den Bergh, Assoc. Professor, Social Work
Gisela Vega, Associate Director, Housing & Residential Life
Chantalle Verna, Asst. Professor, History and Int'l Relations
Mercedes Vigon, Assistant Director, Int'l Media Center
Ophelia Weeks, Assoc. Professor
Donna Weir-Soley, Asst. Professor, English
Barbara Weitz, Instructor, English
Kirsten Wood, Assoc. Professor, History

New Women's Studies Requirements (effective Fall 2011)

Bachelor of Arts in Women's Studies

I. Introductory Courses (select one course)

- WST 3015 Introduction to Women's Studies
- WST 3641 Gay and Lesbian Across Societies
- WST 3105 Gender Issues Across the Globe

II. Depth Courses (select one course)

- WST 4272 History of Women and Gender in the Modern Middle East
- WST 4614 Gender & Sport in American Society
- WST 4905 Independent Study
- WST 4940 Internship
- WST 4930 Special Topics
- WST 4931 Women in Leadership
- WST 4252 Border Crossing: Race and Gender in Historical and Transnational Perspective

III. Breadth Courses (Social Science and Humanities Courses)

7 courses in Women's Studies or from approved list of courses offered. Breadth courses must be chosen from at least 3 different disciplines (i.e., History, Anthropology, Art and Art History, Economics, English, Humanities, International Relations, Labor Studies, Modern Languages, Music, Philosophy, Political Science, Geography, Psychology, Religion, Sociology, Architecture, Business, Criminal Justice, and Social Work). For course options, please see our current list of approved courses on our website:

<http://casgroup.fiu.edu/wstudies/> under "Academics."

IV. Capstone (one course)

- WST 4504 Feminist Theory

Undergraduate Certificate in Women's Studies

A student may acquire the Certificate in Women's Studies by fulfilling the following requirements:

Core I Requirement (3 credits)

- WST 4504 Feminist Theory

Core II Requirement (6 credits)

Choose two of the following courses or any other undergraduate level WST course:

- WST 3015 Introduction to Women's Studies
- WST 3105 Gender Issues Across the Globe
- WST 3641 Gay and Lesbian Across Societies
- WST 4252 Border Crossing: Race and Gender in Historical and Transnational Perspective
- WST 4272 History of Women and Gender in the Modern Middle East
- WST 4614 Gender & Sport in American Society
- WST 4931 Women in Leadership
- WST 4905 Independent Study
- WST 4930 Special Topics
- WST 4940 Internship

Electives: Choose from approved list of courses offered (9 credits).

For course options, please see our current list of approved courses on our website:

<http://casgroup.fiu.edu/wstudies/> under "Academics."

Graduate Certificate in Women's Studies

Certificate candidates must complete a total of 15 credit hours at the **5000 level or higher**. 6 credit hours from the core + 9 credit hours from the list of graduate level electives = 15 credit hours:

Core I Requirement (3 credits)

WST 5507 Feminist Theory

Core II Requirement (3 credits)

Choose one of the following courses or any other graduate level WST course:

WST 5253 Border Crossing: Race and Gender in Historical and Transnational Perspective

WST 5935 Special Topics in Women's Studies

WST 5946 Women's Studies Internship

WST 5905 Independent Study

WST 5936 Women in Leadership

Graduate Level Electives (9 credits)

Choose from approved list of graduate level Women's Studies electives. For more options, please see our current full list of approved courses on our website: [http://casgroup.fiu.edu/wstudies/under "Academics"](http://casgroup.fiu.edu/wstudies/underAcademics).

New Queer Studies Certificate at FIU

The certificate in Queer Studies is relevant and beneficial for students in all areas of the humanities and social sciences, and for students planning to go into law, medicine, health, politics, business, or any other profession in which interpersonal skills are necessary and diverse communities are served. Given the growing recognition of the rights of gay individuals, and the rejection of discrimination based upon sexuality—from the recent repeal of the military ban on open lesbian and gay service (DADT), the movement toward marriage inclusiveness in several states, and calls for the repeal of the Federal Defense of Marriage Act (DOMA), to addressing bullying of LGBTIQ peoples on college campuses, to the recognition of more than “two” genders in many cultures around the world, and the recognition of multiple sexualities throughout history and across cultures—this certificate will enable students to better understand the complexity of non-normative sexualities in a global context. Understanding sexuality and its many manifestations is crucial in navigating issues on a local, national, and global scale. The Certificate in Queer Studies will give students at FIU an important advantage as humane and inclusive global citizens.

The Certificate will complement the growing interest in addressing issues relevant to the South Florida queer community. One example of the vibrancy of the Miami LGBTIQ community is the annual Miami International Gay and Lesbian Film Festival, which includes a number of FIU student, faculty and staff volunteers. Now in its thirteenth year, the film festival attracts participants and viewers from all over the world. The Certificate in Queer Studies will enable FIU undergraduates an opportunity

to enroll in a course of study that examines critically the relationship between queer sexual and gender identities, experiences, cultures and communities in a wide range of global socio-cultural and political contexts across time. The Certificate will empower students to learn through a rigorous study of the experiences of queer individuals and communities globally from historical, literary, sociological, theological, psychological and anthropological perspectives. Working across disciplinary fields, the program will encourage students to investigate how non-normative or minority sexual identities intersect with other categories of identity, such as race, gender, class, nation, ethnicity, and disability. We believe the Certificate in Queer Studies will truly move FIU Worlds Ahead.



Professor Steven Blevins

For more information contact Professor Steven Blevins, Faculty Coordinator for the Queer Studies Certificate.

ENROLLMENT SUMMARY

(Fall 2010 – Summer 2011)

A total of 3,053 students were enrolled in the 75 undergraduate and 13 graduate level courses offered by the Women's Studies Center for the Academic Year 2010-2011 (Fall 2010 – Summer 2011). By July 2011, there were 32 students majoring in Women's Studies, 16 second majors, and 11 students pursuing a certificate. A total of 17 students earned a B.A. in Women's Studies and 5 students earned a Women's Studies certificate.

FALL 2010 COURSES			
COURSE #	COURSE NAME	INSTRUCTOR	ENROLLMENT
FALL 2010 Modesto Maidique Campus - Undergraduate			
WST 3641	Gay/Lesbian in the U.S.	Vega	32
WST 4504	Feminist Theory	Boutaghou	58
WST 4905	WST Independent Study	Shrage	2
WST 4940	Women's Studies Internship	Shrage	1
AML 3415	Am Lit: Rehearsing Feminism	Hoder-Salmon	28
AML 4606	19th Cen. African Am. Literature	Russel	46
CCJ 3666	Victimology	Cohn	75
CCJ 4663	Women, Crime & Crim. Justice	Vincent-Robinson	74
ENL 4370	Virginia Woolf & Her Circle	Marcus	42
LIT 4930	Gender & Sexuality in Renaissance Europe	Strycharski	30
LIT 4930	Queer Textualities: Lesbian, Gay, Bisexual & Transgender Literature	Blevins	35
LBS 4210	Women and Work	Addy	10
PHM 4123	Philosophy of Feminism	Shrage	31
REL 4361	Women in Islam	Musa	33
SYD 3804	Sociology of Gender	Mizrach	55
SYG 4060	Sociology of Sexuality	Lineberger	42
FALL 2010 Modesto Maidique Campus - Graduate			
WST 5507	Feminist Theory	Boutaghou	1
WST 5905	WST Independent Study	Shrage	1
LBS 5215	Women in the Workplace	Addy	5
FALL 2010 Biscayne Bay Campus - Undergraduate			
WST 3641	Gay/Lesbian in the U.S.	Owles	31
AML 4624	African American Women Writers	Weir	35
ENL 4254	Late Victorian Fiction	Rochelson	33
SOP 3742	Psychology of Women	Stephens	82
FALL 2010 Broward Pines Center – Undergraduate			
WST 3015	Intro to Women's Studies	Moura-Kocoglu	18
FALL 2010 Online Courses - Undergraduate			
WST 3015	Introduction to Women's Studies	Kai	69
ECS3254	Women, Men, & Work in USA	Alonso	33
ECS 3021	Women, Culture, & Economic Development	Alonso	31
MAN 4102	Managing Diversity	Kleban	104
REL 3162	Healers & Medium	Pfeiffer	38
REL 3145	Women & Religion	Maarif	24
REL 3171	Sex & Religion	Maarif	42
REL 3520	Saints, Witches, & Cathedrals	Maarif	19
SOP 3742	Psychology of Women	Stephens	70

SPRING 2011 COURSES			
COURSE #	COURSE NAME	INSTRUCTOR	ENROLLMENT
<i>SPRING 2011 Modesto Maidique Campus- Undergraduate</i>			
WST 3015	Introduction to Women's Studies	Addy	46
WST 3641	Gay/Lesbian Across Societies	Loynaz	36
WST 4504	Feminist Theory	Patil	13
WST 4930	Special Topics: Representation of Homo-eroticism in Arab Literature & Culture	Boutaghrou	15
WST 4930/HIS 4315	Special Topics: Gendered History of the Body	Morcillo	9/9
WST 4931	Women & Leadership	Eaton	12
WST 4940	Women's Studies Internship	Shrage	3
AML 4300	Major American Writers: Chopin, Wharton, Cather	Hoder-Salmon	76
CCJ 3666	Victimology	Cohn	76
INR 4404	International Protection of Human rights	Yesiltas	44
LAH 4721	History of Women in Latin America	Uribe	31
LBS 4154	Workers & Diversity	Addy	12
LIT 3384	Caribbean Women Writers	Arostegui	37
POS 4072	Women in Politics	Depalo	51
REL 3145	Women & Religion	Rowan	42
REL 3593	Women in the Early Church	Mcdaniel	29
REL 4364	Quran: Gender & Jihad	Musa	27
SOP 3742	Psychology of Women	Stephens	83
SYG 4060	Sociology of Sexuality	Lineberger	44
SYD 3804	Sociology of Gender	Lineberger	46
<i>SPRING 2011 Modesto Maidique Campus - Graduate</i>			
WST 5935	Special Topics: Representation of Homo-eroticism in Arab Literature & Culture	Boutaghrou	1
EUH 5935	Special Topics: Gendered History of the Body	Morcillo	3
WST 5936	Women in Leadership	Eaton	2
WST 5905	WST Independent Study	Shrage	1
ANG 6303	Comparative Feminisms	Faria	1
LAH 5905	Readings in Latin American History: Women, Family, & State	Szuchman	7
LBS 5155	Workplace Diversity	Addy	4
<i>SPRING 2011 Biscayne Bay Campus - Undergraduate</i>			
WST 3641	Gay/Lesbian in the U.S.	Owles	33
LIT 3674	Literature of the Jewish Immigration Experience	Rochelson	34
LIT 4536	Multi-Cultural Women Working Class Literature	Weir	25
<i>SPRING 2011 Online Courses - Undergraduate</i>			
WST 3015	Introduction to Women's Studies	Kai	67
WST 3641	Gay & Lesbian Across Societies	Shrage	33
AML 4624	African American Women Writers	Weir	45
CCJ 6665	Victimology & System	Cohn	29

SUMMER 2011 COURSES			
COURSE #	COURSE NAME	INSTRUCTOR	ENROLLMENT
Summer 2011 Modesto Maidique Campus - Undergraduate			
WST 3015	Introduction to Women's Studies – Summer B	Blumenfeld	34
WST 3105	Gender Issues Across the Globe—Summer B	Moura-Kocoglu	31
WST 3641	Gay/Lesbian in the Across Societies - Summer B	Loynaz	35
WST 4905	Women's Studies Independent Study – Summer C	Shrage	1
WST 4930/HIS 4315	Special Topics: Gendered History of the Body—Summer A	Morcillo	8/13
POS 4072	Women in Politics– Summer C	Depalo	46
SOP 4774	Female Sexuality—Summer A	Coffman	99
Summer 2011 Modesto Maidique Campus - Graduate			
WST 5905	WST Independent Study	Shrage	1
SOW 5109	Crisis in the Lives of Women– Summer C	Martin	29
EDH 6050	Women in Higher Education-Summer A	Blanchard	9
Summer 2011 Biscayne Bay Campus - Undergraduate			
SOP 3472	Psychology of Women	Telan	88
Summer 2011 Online Courses - Undergraduate			
WST 3015	Intro. To Women's Studies—Summer C	Kai	44
WST 3641	Gay & Lesbian Across Societies—Summer A	Shrage	31
AFA 4372	Race, Gender, & Sexuality in Hip Hop	Stephens	43
ECP 3254	Women, Men, & Work in USA—Summer A	Alonso	34
ECS 3021	Women, Culture, & Economic Development-Summer A	Alonso	34
MAN 4102	Managing Diversity-Summer A	Kleban	49
REL 3145	Women & Religion—Summer A	Gudorf	32
REL 3162	Healers & Mediums—Summer B	Pfeiffer	59
REL 3171	Sex & Religion—Summer B	Maarif	59
SOP 3742	Psychology of Women—Summer C	Stephens	64

2010-2011 ENROLLMENT SUMMARY

	<i>Number of Courses</i>		<i>Enrollment</i>
	Regular	Online	
FALL 2010 Summary			
Undergraduate	21	9	1177
Graduate	3	0	7
Fall 2010 Total	24	9	1184
SPRING 2011 Summary			
Undergraduate	23	4	1007
Graduate	7	0	19
Spring 2011 Total	30	4	1026
SUMMER 2011 Summary			
Undergraduate	8	10	804
Graduate	3	0	39
Summer 2011 Total	11	10	843
GRAND TOTAL	65	23	3053



At the awards luncheon for Elaine Gordon Scholarship Recipient (left to right): Elaine' Gordon's son, Brian Gadinsky; 2011-2012 Elaine Gordon Scholarship winner Chelsea Klaiber; the first Elaine Gordon scholar, Maria Ortiz (2001-2002); Elaine Gordon's daughter and granddaughter Pam and Brooke Gadinsky.

Women's Studies Center

Florida International University
11200 SW 8th Street
Modesto Maidique Campus, DM 212
Miami, Florida 33199

(305) 348-2408
wstudies@fiu.edu
<http://casgroup.fiu.edu/wstudies>