



Women's Studies Center  
FLORIDA INTERNATIONAL UNIVERSITY

2008-2009

# Annual Report







# Contents

**WOMEN'S STUDIES CENTER  
2008-2009 ANNUAL REPORT**

**DIRECTOR** LAURIE SHRAGE

**ASSOC. DIRECTOR** AURORA MORCILLO

**COPY EDITOR** VRUSHALI PATIL

**DESIGNER** CHRISTI NAVARRO

**CONTRIBUTING EDITORS**  
LEAH BLUMENFELD  
AURORA MORCILLO  
CHRISTI NAVARRO  
VRUSHALI PATIL  
PAULA POWELL  
LAURIE SHRAGE



## Women's Studies Faculty & Staff Accomplishments

- 2 Director's Summary of Accomplishments
- 3 Associate Director's Report
- 4 New Women's Studies Center Staff
- 6 Women's Studies Faculty Achievements

## Student Activities & Achievements

- 16 2008-2009 Graduates
- 18 Women's Studies Alumni Accomplishments
- 20 200 Scholarship Winner
- 22 8th Annual Women's Studies Student Conference
- 26 *Making Waves* Journal
- 28 The Vagina Monologues
- 30 Women's Studies Internships
- 32 Women's Studies Student Association (WSSA)
- 34 Women's Studies Graduate Student Association (WSGSA)



## Community Outreach & Extra-Curricular Activities

- 37 Women's Studies Board of Advisors, 2008-2009
- 39 Friends of the Women's Studies Board of Advisors
- 40 Roberta Fox, In Memoriam
- 41 Women's Studies Donors
- 44 Women of Distinction Lecture Series
- 46 Women's Studies Events
- 48 2009 Spring Gala

## International Programs

- 51 Gender & Women's Studies Across Cultures International Consortium
- 56 GEMMA: Master's Degree in Women's and Gender Studies

## Women's Studies Faculty

- 58 Women's Studies Core Faculty & Committees
- 59 Women's Studies Affiliated Faculty

## Women's Studies Course Summaries

- 60 New Women's Studies Courses
- 61 Enrollment Summary





# DIRECTOR'S SUMMARY OF ACCOMPLISHMENTS



By Laurie Shrage, PhD.

I began my term as Director of Women's Studies in August 2008, and am delighted to have joined such a strong and active program. For me, the main highlight of this year has been getting to know our faculty, students, advisory board, alumni, and staff members, as well as many other terrific colleagues at FIU.

My main goal for the year was to preserve the many fine traditions and groups that were started with our first director, Marilyn Hoder-Salmon, and expanded under the leadership of Suzanna Rose, and our interim directors Meri-Jane Rochelson and Aurora Morcillo. This included organizing our annual Women of Distinction Lecture Series; supporting our student organizations and their events (especially, the annual student conference and the Vagina Monologues performance); working with our Advisory Board members who provide role models for our students and connect us to the Miami community; implementing our new bylaws and holding committee elections; planning and holding our spring gala; supporting the women's book club; and building relationships with our partner institutions in the Women Across Cultures Consortium.

After Beverly Thompson, a WS visiting professor, left for

a permanent position, we sought and obtained approval to conduct a search for a new WS tenure-track faculty member. We organized a joint search with a number of programs (Political Science, Anthropology, Criminal Justice, and Modern Languages). Professor Morcillo chaired the search committee, which succeeded in hiring Dr. Maya Boutaghou, who will join us in the Fall of 2010, when she completes a research fellowship at UCLA. Dr. Boutaghou will be a great addition to our faculty, bringing expertise in post-colonial studies and women writers in North Africa. With the departure of Wilma Dagdag to Biology, we also conducted a search for a new administrative assistant. We were fortunate to hire Paula Powell, who comes to FIU with much previous administrative experience, as well as experience in print journalism and radio. We also hired two fabulous Graduate Assistants, Leah Blumenfeld and Christi Navarro, who have made important contributions all year to our Center. Leah will soon complete her PhD in Latin American Politics, and Christi is working on a PhD in Public Health. With the new academic year, Dawn Addy will hold a joint appointment with Women's Studies and the Labor Center. Dr. Addy brings extensive expertise on women and work, and the history of women workers' organizations.

We added many new affiliated faculty members to our program, and now have approximately 80 faculty members who teach courses that address gender issues in the social and natural sciences, and humanities. These faculty are also publishing scholarship on women and gender issues, and we were able to highlight some of this work in our

*"It is privilege to be part of such a lively intellectual and cultural community..."*

Women of Distinction series this year, with book author events that included Professors Vrushali Patil, Kathleen Martin, and Meri-Jane Rochelson.

We expanded our internship opportunities for students this year, by making contacts with many community organizations. We also created a new internship opportunity on our campus by launching XX Radio, directed by Claudia Santos, which will provide students with the opportunity to learn the skills of interviewing, broadcasting, recording and editing, and researching topics and people, while adding feminist voices to our local FM campus radio station. In addition, we hosted two international Women's Studies graduate students this past



summer, from Slovenia and Poland.

One of our biggest challenges right now is to find the funding to support our students and extra-curricular programming. We are extremely grateful to our donors and friends for their past and continued generous support, which has enabled us to offer scholarships, support student travel, and host public lectures. One of my main goals for the upcoming year will be to increase our fundraising efforts so that we can offer paid internship opportunities for our students, almost all of whom need to work to stay in school. We have also agreed to host the next meeting of our consortium institutions (which includes universities in Granada, Fez, and Bogata) in the fall of 2010 and will need to raise money for this event.

I am grateful for the extensive support and warm welcome that I have received during my first year at FIU. It is a privilege to be part of such a lively intellectual and cultural community, both on and off campus. It is also a privilege to have the opportunity to contribute to the lives of our students, while addressing the problems that women face in their diverse families, cultures, and communities.

## ASSOCIATE DIRECTOR'S REPORT

By Aurora G. Morcillo, PhD.

This has been a year of changes for the Women's Studies Center. We welcomed Dr. Laurie Shrage as our new director. She brought with her many new ideas and perspectives that have been gradually integrated into the center. Despite take over during a time of severe budget cuts at the university, Laurie has helped the center to stay optimistic and to focus on the many positive developments for women on our campus, in our community, and in the larger world.

My role this year has been to help Dr. Shrage in her transition, and to continue supporting the programs I helped develop in my position of Interim Director. I chaired the search committee for an assistant professor position in Women's studies. The departments involved in our search included: Modern Languages, Criminal Justice, Political Science/International Relations and Anthropology.

We received a large pool of candidates and interviewed three who visited our campus. We successfully hired a

promising scholar, Dr. Maya Boutaghou who holds a PhD in Comparative literature from the University of Limoges and is currently working on a postdoctoral appointment at UCLA under the auspices of the Mellon Foundation.

I assisted Dr. Shrage in the planning of several Women's Studies events including: our Spring Gala (celebrated in our very own Frost Museum), our women of distinction series, and the women's studies student conference (organized by our Graduate Student Association).

As the exiting Interim director I introduced Dr. Shrage to some of our Board of donors. Finally, I

assisted Dr. Shrage in the organization of the Consortium meeting in Fez, Morocco.

As this academic year comes to a close, I am happy to see our student enrollments growing along with increased faculty involvement. During these difficult economic times, the need to support women's rights and access to education has never been greater. FIU has grown to meet these challenges.

I want to thank everyone for all the support I have received from everyone in the last eight years of service to Women's Studies, and renew my support to our program and its new leadership.



# NEW WOMEN'S STUDIES STAFF

*In the 2008-2009 academic year, the Women's Studies Center said goodbye to our long time Administrative Assistant, Wilma Dagdag, and Graduate Assistant, Marianna Carlucci. In the Fall, we welcomed our two new Graduate Assistants, Leah Blumenfeld and Christi Navarro. In December, our new Administrative Assistant, Paula Powell joined our staff.*

## WILMA DAGDAG

### WS Administrative Assistant, 2000-2008



"I was in DM 212 for a short period of eight years. I had arrived in Miami from the Philippines two months before starting at FIU. Those long eight years went so quickly, because working in Women's Studies was like home to me. Drs. Rose, Morcillo, and Shrage were great people to work with, along with our WS faculty affiliates, the donors, the Board of Advisors, graduate assistants and, of course, the WS students. I enjoyed working on events--the book events, gala, conferences, and the like. I have learned a great deal working here. I was so amazed to see how big the program grew from when I joined until I left. Also, I took some FIU classes after work hours: two graduate courses under Health Policy and Management and some IT classes (mind you I got A in all them, I wonder how. At this moment, I am not taking classes, but will surely come back to my studies when I figure out the career path I will take. Now I am in the Biological Sciences Department, a new home to me. In the community, I hope to serve in the prison ministry. May the Lord bless you as I have been blessed."

## PAULA E. POWELL

### Administrative Assistant

From Kingston, Jamaica she was formerly the Administrative Assistant to the Senior Vice President of Finance and Corporate Planning at Air Jamaica Ltd., and Executive Assistant to the General Manager, Marketing (N.A.) and Local Sales, at Wray and Nephew Ltd., distillers and distributors of world famous Appleton rums. Just prior to immigrating to Florida in 1998, Paula worked as a freelance writer at the Gleaner and Sunday Herald newspapers for eight years.

In Florida, her work experience has been focused in the Education field, having worked for over eight years at a private college prior to working with FIU. Paula continues her keen interest in women's issues and current events by producing REAL TALK, REAL ISSUES, a community-service radio program, in her spare time.





## **LEAH BLUMENFELD**

### **Graduate Assistant**

Leah Hutton Blumenfeld is a Doctoral Candidate in the Department of Politics and International Relations. She is working on a dissertation examining the international war on drugs and police reform in the Dominican Republic and expects to graduate during the 2009-2010 year. She has a Bachelor's degree in Spanish Literature from Harvard University and a Master's degree in International Studies from the University of Connecticut. Leah joined the Women's Studies Center as a Graduate Assistant in August 2008 after four years as a Teaching Assistant in PIR where she worked with Dr. Judith Stiehm in several WS courses. She has enjoyed advising students and teaching the Introduction to Women's Studies course. She plans to teach at the university level after completing her degree, or work with a government organization. Leah is a recently-appointed member of the Miami-Dade County Commission for Women. When not on campus, she can often be found teaching Pilates, practicing yoga, taking ballet classes, and spending time with her husband Jamie.



## **CHRISTI M. NAVARRO**

### **Graduate Assistant**

Christi is originally from St. Croix, U.S. Virgin Islands. After completing her B.S. in Biological Sciences at FIU, she started her career teaching Biology and Anatomy at the high school level. After seven years of teaching, she returned to FIU as the managing editor for the Journal of Latin American & Caribbean Anthropology during its tenure at the university. Following the journal, Christi served as a coordinator in the Student Affairs department and an adjunct instructor for the Honors College and Undergraduate Studies.

In Spring 2008, Christi completed her Graduate Certificate in Women's Studies. In Fall 2008, she started the Ph.D. program in the Robert Stempel College of Public Health with a McKnight Doctoral Fellowship. Her main research interests are focused on women's health issues, especially in the areas of sexual health education and maternal health. She is a graduate advisor in the Women's Studies Center and the current president of the Women's Studies Graduate Student Association (WSGSA).

## BOOK PUBLICATIONS

**Rochelson, Meri-Jane.** (2008). *A Jew in the Public Arena: The Career of Israel Zangwill*. Wayne State University Press.

**Shrage, Laurie, (ed.).** (2009). *You've Changed: Sex Reassignment and Personal Identity*. Oxford University Press.

**Prugl, Elisabeth.** (in press). *Transforming Patriarchy: Agriculture and Rural Development in the European Union*. University of Michigan Press.

**Prugl, Elisabeth** and Markus Thiel (eds.). (in press). *Diversity and the European Union*. London: Palgrave.

## BOOK CHAPTERS

**Addy, Dawn.** (2009). "Breaking Free: the Power of Experiential Learning as it Impacts the Development of Self-efficacy in Incarcerated Female Adult Learners." In *Empowering Women Through Literacy: Views from Experience*, (pp. 259-270). Edited by Mev Miller, Kathleen P. King. Charlotte, NC: Information Age Publishing.

**Prugl, Elisabeth** and Birgit Locher . (2009). "Gender and European Integration." In *European Integration Theory*. Edited by Antje Wiener and Thomas Diez. Oxford University Press.

**Rochelson, Meri-Jane.** (2009). "Zionism, Territorialism, Race, and Nation in the Thought and Politics of Israel Zangwill." In *'The Jew' in Edwardian Culture: Between the East End and East Africa*. Edited by Eitan Bar-Yosef and Nadia Valman, (pp. 144-160). London: Palgrave.

**Rose, S.M.** (In press, 2009). The protest as teaching technique for promoting feminist activism. In Licona,

A.C. (Ed.). *Feminist pedagogy: A retrospective for the NWSA Journal*, Baltimore: Johns Hopkins University Press. [Reprinting of 1989 article].

**Salokar, Rebecca.** (2008). "Florida: Defining and Redefining Citizen and Community." In George E. Connor and Christopher W. Hammons, eds., *The Constitutionalism of American States*, (pp. 269-286). University of Missouri Press.

**Shrage, Laurie J.** (2009)"Sex and Miscibility." In Laurie J. Shrage (ed.), *You've Changed:*





*Sex Reassignment and Personal Identity*. (pp. 175-193). New York: Oxford University Press.

**Stephens, D. P.**, Phillips, L. D. & Few, A. L. (Invited Chapter-2009). Examining African American female adolescent sexuality within mainstream Hip Hop culture using a womanist-ecological model of human development (pp. 160- 174). In S. Loyd, A. L. Few and K. Allen (Eds.) *Handbook of Feminist Theory, Methods and Praxis in Family Studies*. Newbury Park, CA: Sage Publications.

Phillips, L. D., Reddik- Morgan, K. & **Stephens, D. P.** (2008). Women can be empowered by rap music (139- 142). In K. Burns (Ed.) *Rap Music and Culture- Current Controversies*. New York, NY: Greenhaven Press.

### JOURNAL PUBLICATIONS

**Barrett, Lynne.** Memoir: Hand Clinic, *Willows Wept Review* (online literary journal), Winter 2009 Issue, Dec. 2008.

**Barrett, Lynne.** "Texaco on Biscayne" (short story), *Saw Palm*, Vol. 3, Spring 2009, pp. 91-98.

**Harrison, Kimberly.** (Spring 2009). Response to Jennifer Stayton's "Hell's Belles: Representations of Gender Identity in William Faulkner's *The Unvanquished*." *Concordia English Journal*.

Khorsand Rosa, R., and **S. Koptur.** (2009). Preliminary observations



**VRUSHALI PATIL**

and analyses of pollination in *Coccothrinax argentata*: do insects play a role? *Palms*, 53 (2): 75-83.

**Lavender, Abraham.** (February 2009). "Blacks in Early Miami Beach: A Portrait From the City's First Census in 1920." *Tequesta (Florida History Journal)*.

**Morcillo, Aurora.** (November 2008). "Uno, Dos, Tres, Cuatro. Women Modern Docile Bodies" in Andrew McFarland and Boria Majumdar eds. *Sport in Society*, 11 (6): 673 - 684.

**Patil, Vrushali.** (2008). Contending Masculinities: The Gendered (Re) negotiation of Colonial Hierarchy in the United

Nations Debates on Decolonization. *Theory and Society* 38(2): 195.

**Patrouch, Joseph F.** (2008). The Coronations of Queen María: Reaching Beyond Religious Divisions in Prague, Frankfurt am Main, and Bratislava, 1562-1563. *Kosmas. Czechoslovak and Central European Journal* 21, 9-21.

**Prugl, Elisabeth.** (May 2009). Does Gender Mainstreaming Work? Feminist Engagements with the German Agricultural State. *International Feminist Journal of Politics* 11: 2, 174-195.

**Prugl, Elisabeth.** (Forthcoming, Winter 2010). Feminism and the Postmodern State: Gender Mainstreaming in European Rural

Development. *Signs: Journal of Women in Culture and Society* 32, 2.

Lewis, R. J., Derlega, V. J., Brown, D., **Rose, S.**, & Henson, J.M. (In press, 2009). Sexual minority stress, depressive symptoms, and sexual orientation conflict: Focus on the experiences of bisexuals. *Journal of Social and Clinical Psychology*.

**Shrage, Laurie.** (June 2008). Commentator on "A Sensible Anti-Porn Feminism," by A. Eaton, Symposia on Gender, Race, and Philosophy, 4, Winter.

Thomas, T. L., & **Stephens, D. P.** (2009). Young women speak: Why we seek health care and what we need from

our providers. *Journal of the Florida Medical Association*, 108, 18-26.

Valdés, James J. and **Weeks, Ophelia I.** (2009) Estradiol and Lithium Chloride Specifically Alter NMDA Receptor Subunit NR1 mRNA and Excitotoxicity in Primary Cultures, *Brain Res* 1268:1-12, May 1, 2009.

### CURATORIAL

**Damian, Carol.** Director and Chief Curator, Frost Museum of Art, FIU, November 2008.

### BOOK REVIEWS & OTHER PUBLICATIONS

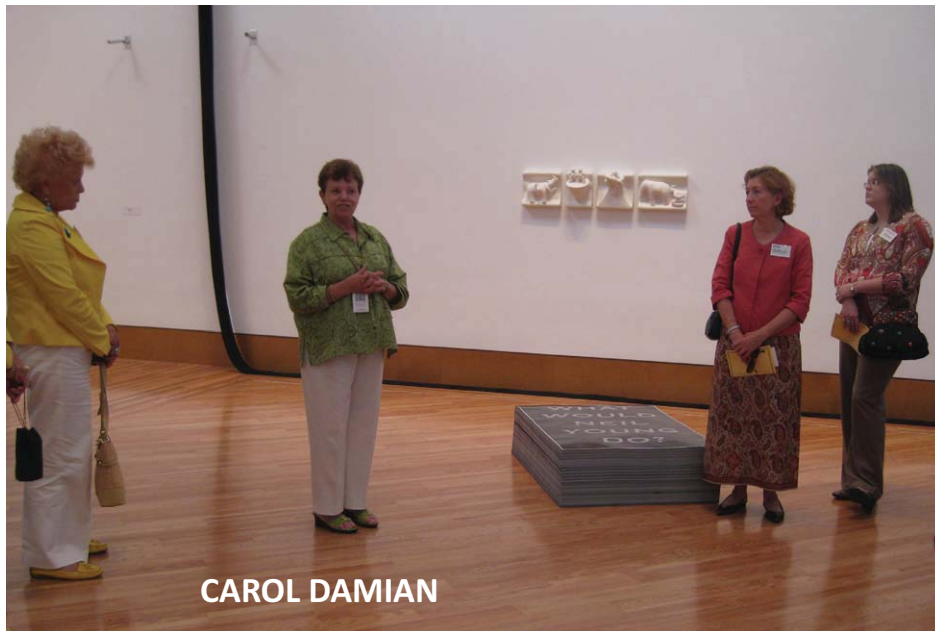
**Lifshitz, Felice.** Anna M. Silvas, Macrina the Younger, Philosopher of God, *The Medieval Review*.

**Prugl, Elisabeth.** The Price of Gender Equality. *Politics and Gender* 5 (March 2009): 111-121.

**Prugl, Elisabeth.** Women's Citizenship and Political Rights. *Journal of Women, Politics & Policy* 29, 3 (2008): 435-438.

**Rochelson, Meri-Jane.** *The Jewess in Nineteenth-Century British Literature and Culture*, by Nadia Valman. *Journal of British Studies* 47 (July 2008): 707-9.

Hospital, M. & **Rose, S. M.** (2008). Exploding Stereotypes and Moving Forward: LGBT Research has a New Look. Review of *Handbook of Counseling and Psychotherapy with Lesbian, Gay, Bisexual, and Transgender Clients*, (2nd Ed.) and *Sexual Orientation*



CAROL DAMIAN



*and Mental Health: Examining Identity and Development in Lesbian, Gay, and Bisexual People. Sex Roles*, 58 (11-12), 891-893.

## **RECOGNITION**

**Kathleen R. Martin** (2008). Recipient, A. B. Thomas Award for best book on Latin America from the Southeastern Council of Latin American Studies (SECOLAS), for recent book: *Discarded Pages: Araceli Cab Cumi, Maya Poet and Politician*.

**Rose, Suzanna**. Appointed as Distinguished Reviewer, Psychology of Women Quarterly, 2009.

**Stephens, D.P.** Blackboard Greenhouse Exemplary Course Award for SOP 3742: Online Psychology of Women, August 2008. Blackboard Inc. & Blackboard Learning Systems.

**Stiehm, Judith**. (2008). Recipient, Frank J. Goodnow Award for significant contributions to the political science profession and the American Political Science Association at the 2008 Awards Ceremony, Thursday, August 28, in conjunction with the APSA Annual Meeting in Boston.

**Stiehm, Judith**. 2008 FIU Faculty Award for Excellence in Research.

**Stuart, John**. (2009). Recipient, Silver Medal for Non-Fiction, Florida Book Awards 2008 for *The New Deal in South Florida: Design, Policy and Community Building*,

1933-1940, edited by John A. Stuart & John F. Stack, Jr., University of Florida Press.

**Van Den Bergh**. Social Worker of the Year, State of Florida, Society of Social Work Leaders in Health Care, June 2008. This award was presented at the annual NASW Florida Chapter conference based on creative and innovative health care practice with at risk populations.

**Ophelia, Weeks**. "Best in Class" feature in Miami Herald for Merit – Teaching/Service Efforts, and spearheading QBIC, FIU.

## **FUNDING/GRANTS**

**Harrison, Kimberly**. "Using Nontraditional Means to Meet Traditional Aims in First-Year Writing Classes." Grant to assist in assessing our hybrid first-year writing courses. Co-author/investigator, Mike Creeden, Council of Writing Program Administrators, Summer 2009-March 2010 (\$1,700).

**Rose, Suzanna**. (PI). "Parents as Teachers." The Children's Trust, 8/1/08-7/31/09, (\$290,275).

## **CONFERENCE PAPERS**

**Aysa-Lastra, Maria**. Dimensions of Stigma, Sexual Behavior and HIV transmission knowledge among an urban college population in South Florida, Cultures in Context: HIV and Substance Abuse Research in the Southeast. The impact of race, gender, age, sexual orientation, religion and the rural/urban divide



**DIONNE STEPHENS**

in the southeastern United States. Meharry University, June 12-13, 2008.

**Barrett, Lynne**. Panel "Book Arts, Book Making, Chapbooks and DIY Publishing," Gulf Coast Association of Creative Writing Teachers Annual Conference, University of South Alabama, Fairhope, AL, April 3, 2009.

**Barrett, Lynne**. "The Map of Cinderella," Southwest Florida Romance Writers, Naples, FL Feb. 28, 2009.

**Barrett, Lynne**. Three Presentations on Fiction, Florida Gulf Coast University Sanibel Writers Conference, Big Arts Center, Sanibel, FL—Nov. 6-8, 2008.

**Bauman, Whitney**. Discussant, Women's Studies Student Conference, Women's Studies Center, FIU, March 2009.

**Blumenfeld, Leah**. "Applying Just War Theory to the War on Drugs." International Ethics in Times of

Insecurity: A Mini Conference, Florida International University, February 20, 2009.

**Harrison, Kimberly.**

"Preparing TAs: Stasis, Squalls, or Sea Change?" Conference on College Composition and Communication, March 2009.

**Harrison, Kimberly.**

"Professional Identities: When Writing TAs are Not English Majors." Council of Writing Program Administrator, July 2009.

**Lifshitz, Felice.** Chair and Commentator, "Bound Feet,

Veiled Heads and Corseted Waists: Chastity Belts and the Tropes of Female Containment," American Historical Association, 2009.

**McCormack, Kathleen.** "On the Rural Road: George Eliot, William Cobbett, and Edith Simcox," Nineteenth Century Studies Association Conference, University of Wisconsin, March 2009.

**McCormack, Kathleen.** "George Eliot and the Culture of the Spa," Conference of the North American Victorian Studies Association, Yale

University, November 2008.

**Bares, B. and Onorato, S. M.** Women who lead: Developing partnerships between student affairs and academic affairs. Paper presented at the National Meeting of the National Association of Student Personnel Administrators, March 2009.

**Patil, Vrushali.** "Tourism, Diaspora, and the Realignment of Race and Gender Difference in Contemporary Globalization: Examining India's new tourism promotion campaign from a Transnational



**LINNEA PEARSON**



Feminist Perspective." FIU Women's Studies Consortium. Presented at the annual meeting in Fez, Morocco, July 2009.

**Patil, Vrushali.** Discussant, Women's Studies Student Conference, Women's Studies Center, FIU, March 2009.

**Patrouch, Joseph F.** "Girlish Devotions: The Piety of Habsburg Archduchesses in the Late Sixteenth Century," American Historical Association/American Catholic Historical Association, New York City, January 2009.

**Pearson, Linnea.** "Women as Healers" in honor of Women's History Month, March 2009.

**Prugl, Elisabeth** and Karen Erickson. "Women in ISA Governance," Annual Conference of the International Studies Association, New York, February 16-18, 2009.

**Prugl, Elisabeth.** Chair and discussant, "Researching Global Politics with a Feminist Ethic," Annual Conference of the International Studies Association, New York, February 16-18, 2009.

**Prugl, Elisabeth.** Discussant, "Interrogating Global Governance from a Feminist Constructivist Perspective," Annual Conference of the International Studies Association, New York, February 16-18, 2009.

**Rose, S.M.,** Dean, K.E., & Boyer, M. "Can You Dismantle the Master's House from Within? Being a Feminist Administrator in Higher

Education." Association for Women in Psychology, Newport, RI, March 2009.

**Rose, S.M.** "Enjoying the Returns: Women's Friendships after 50." International Congress of Psychology, Berlin, July 2009.

**Rochelson, Meri-Jane.** "The 'Greener' in the Fiction of Israel Zangwill and Abraham Cahan." Presented at the annual meeting of the Nineteenth Century Studies Association, Milwaukee, WI, March 2009.

**Rochelson, Meri-Jane.** "The 'Melting Pot,' the 'Cockpit,' and 'The Principle of Nationalities': Zangwill's Theater of War and Peace." Presented at the annual meeting of the Association for Jewish Studies, Washington, DC, December 2008.

**Stephens, D. P.** "The influence of parental skin color messaging on emerging adult Hispanic women's self identity." Paper presented for the Southwest Council of Latin American Studies Annual Conference. Santo Domingo, Dominican Republic, March 2009.

**Stephens, D. P.,** Aguilar, E., & Hernandez, A. "Emerging adult Hispanic women's beliefs about skin color's values." Paper Presentation for the Anything but Safe: Sex, Sexuality, and Gender Conference. University of South Florida- Tampa, FL, March 2009.

Few, A. L., & **Stephens, D. P.** "African American female adolescent sexuality through an ecological-womanist lens." Paper

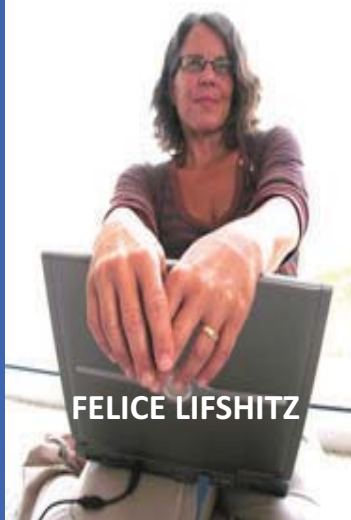
presented at the 2008 Institute for Society, Culture, and Environment Summit, Societal and Individual Transformation: Building Cross-National Research Capacity in Human Development. Riva San Vitale, Switzerland, September 2008.

**Stephens, D. P.** "Beyond the Bells and Whistles: Exemplary courses and best practices for Psychology of Women." Paper presented at BbWorld- Black Board Greenhouse Annual Conference. Las Vegas, NV, July 2008.

**Stephens, D. P. & Phillips, L. D.** "Womanist approach to understanding African American women's sexuality in mainstream Hip Hop culture." Paper presented at the Globalizing Hip Hop Conference: Personhood, Policy & Place. FIU African & African Diaspora Studies and the Wolfsonian Museum Educational Program. Miami, FL, May 2008.

**Van Den Bergh, Nan.** "Strengthening Self Awareness Skill Development Through Creativity." Proposal accepted for presentation at the Association of Baccalaureate Social Work Program Director's Annual Meeting, Phoenix, AZ, March 2009.

**Van Den Bergh, Nan** "Social Workers' Contributions to Breast Cancer Best Practices." Presented at the Council on Social Work Education Annual Program Meeting, Philadelphia, PA, October 29-November 2, 2008.



**Van Den Bergh, Nan**  
 "Providing Culturally Competent Health Care Services for Women Partnering with Women." Presented at the South Florida Cancer Control Collaborative conference on Health Across Cultures, Nova Southeastern University, September 20, 2008.

**Van Den Bergh, Nan**  
 "Removing Barriers to Care for Women Partnering with Women." Presented at the Florida International University Breast Cancer Symposium, September 2, 2008

**Van Den Bergh, Nan.**  
 "Enhancing Self Awareness Through Creativity." Presented at the NASW Florida Chapter annual conference, June 5-7 2008, Boca Raton, Florida

James J. Valdés and **Ophelia I. Weeks.** "Viability of estrogen and lithium-treated primary brain cell cultures with glutamate insult." 39<sup>th</sup> American Association of Anatomists annual meeting, New Orleans, LA, April 21, 2009.

#### **INVITED ADDRESSES**

**Addy, Dawn.** Midwest/Southern School for Women Workers, "Issues for Young Workers: Reaching Out," St. Louis, MO. July 2008.

**Barrett, Lynne.** Reading. Gulf Coast Association of Creative Writing Teachers, University of South Alabama, Baldwin Campus, Fairhope, AL, April 3, 2009.

**Barrett, Lynne.** "Plot and the Tale," Presentation as Visiting Writer, Broward College, Pembroke Pines, FL, March 16, 2009.

**Barrett, Lynne.** Revision Process Workshop, F.I.U. Hutchinson Island Writers Conference, Hutchinson Island, FL, Oct. 22-25, 2008.

**Barrett, Lynne.** Reading. FIU Hutchinson Island Writers Conference, Oct. 25, 2008.

**Barrett, Lynne.** Reading. All Souls Alive, reading with Diane Abu-Jaber, Lorna Owen, All Souls Episcopal Church, Miami Beach FL Oct. 30, 2008.

**Barrett, Lynne.** Reading. Florida Gulf Coast University Sanibel Island Writers Conference, Big Arts Center, Sanibel, Nov. 9, 2008.

**Barrett, Lynne.** "Plot, the Heart of Your Story," six-day workshop International Women's Writing Guild Conference, Skidmore College, Saratoga Springs, NY, June 13-20, 2008.

**Barrett, Lynne.** Reading. "The Noir Side of the Sun," A Write Out Loud Reading, Florida Center for the Literary Arts, Miami, FL May 22, 2008.

**Barrett, Lynne.** Reading. Open Doors Reading: An Evening of Poetry and Storytelling, Open Doors (co-sponsored by the Florida Center for the Literary Arts), Miami, FL, May 20, 2008.

**Lifshitz, Felice.** "Gendered Transmissions: Women, Men and Christian Culture in Early Carolingian Francia," Wissenschaftskolleg zu Berlin, January 2009, and University of North Carolina-Chapel Hill, February 2009.

**Morcillo, Aurora.** "La Historia del Franquismo desde el otro lado del Atlantico" Invited Presentation Universidad Complutense de Madrid, December 6, 2008.

**Morcillo, Aurora.** "Imaginario de Género: estereotipos y



discurso Franquista" Jornadas Mujeres Bajo la dictadura Franquista, Fundación Pablo Iglesias, Madrid, December 2-3, 2008.

**Morcillo, Aurora.** "The Orient Within. Women's Self-empowering Acts under Francoism" Chaired by Professor Paul Preston, Cañada Blanch Centre, London School of Economics, December 10, 2008.

**Patrouch, Joseph F.** "Mutter-Tochter-Reich: Kaiserin Maria und Erzherzogin Elizabeth, 1554-1570" [Mother-Daughter-Empire: Empress Maria and Archduchess Elizabeth, 1554-1570], Friedrich-Meinecke-Institut, Freie Universität Berlin, February 2009.

**Pearson, Linnea.** "Letting Your Light Shine in the Darkness." Baccalaureate Graduate Address at Florida State University. December 2008.

**Prugl, Elisabeth.** "Mainstreaming Gender in the Postmodern State: Rural Development in Bavaria and Saxony-Anhalt," Humboldt University, Berlin, June 26, 2008.

**Rochelson, Meri-Jane.** Women's Studies in the Women of Distinction Series: *A Jew in the Public Arena: The Career of Israel Zangwill*. The Wolfsonian-FIU, Miami Beach, January 2009.

**Rochelson, Meri-Jane.** "The Melting Pot: A Centennial Look Back at Israel Zangwill's Play." The Harry and Marjorie Tobias Lecture, Fall 2008 Jewish Heritage Lecture

Series. The George L. Mosse/Laurence A. Weinstein Center for Jewish Studies, University of Wisconsin-Madison, November 2008.

**Rose, Suzanna.** "Strategies for Women in Leadership: Warming the Chilly Climate." Keynote Address, Women's Leadership Conference, Florida Atlantic University, March 2009.

**Shrage, Laurie.** "The Idea of a Sexual Orientation and Its Relation to Sex Identity," Keynote Speaker, Sexual Selves Conference, University of Illinois, Urbana-Champaign, May 2, 2009.

**Shrage, Laurie.** Speaker, Society for Women in Philosophy Distinguished Woman Philosopher 2008 panel. American Philosophical Association Conference, Philadelphia, PA., December 28, 2008.

**Shrage, Laurie.** "Does the Government Need to Know Your Sex?" Speaker, Political Philosophy Podcast Symposium, Public Reason: a blog for political philosophers, October 2008.

**Stephens, D.** "Dime Pieces for Dollars: Hip Hop music videos' influence on the commercialization of black womanhood." Invited address for the Dorothy F. Schmidt College of Arts and Letters' Black Music & Commercialism Symposium. Florida Atlantic University, Boca Raton FL, February 2009.

**Stephens, D.** "Freaks, Gold Diggers, Divas & Dykes: Framing black female sexual risk outcomes." Invited address for the Department of African American Studies Research Seminar Series. The University of Houston, Houston, TX, February 2009.

**Stephens, D.** "The socio historical construction of African American womanhood in Hip Hop culture and its impact on sexual identity." Invited address for the Sexuality Studies Program Lecture Series-Department of Women's Studies, and Department of Sociology. York University, Toronto, ON, November 2008.

**Stephens, D.** "Tuning In, Turning it On: Constructions of women's bodies across the media." Invited Speaker for Love Your Body Day hosted by the National Organization of Women- Florida International University Chapter. Florida International University, Miami, FL October 2008.



**LYNNE BARRETT**



SUZANNA ROSE

**Weeks, Ophelia.** "Taking the reins in the Sciences." Invited panelist, Women Who Lead Conference, FIU, Miami, FL, March 27, 2009.

**Weeks, Ophelia Inez.** "QBIC: An Interdisciplinary and Quantitative Program in the Biological Sciences Department at Florida International University." MIT Biology Dept HHMI Seminar Series, Boston, MA, November 24, 2008.

#### EDITORIAL BOARDS

**Barrett, Lynne.** Editor, *The Florida Book Review*.

**Lifshitz, Felice.** General Editor for two special issues of the *Medieval Feminist Forum: MFF* 44.2 (Feminist Approaches to Medieval Visual Culture) and *MFF* 45.1 (Giving Credit Where Credit is Due (Sketching a Trajectory of Feminist

Medieval Studies)).

**Patil, Vrushali.** Reviewer, *Gender and Society*.

**Patrouch, Joseph.** Editorial Board Member, Austrian History Yearbook (Cambridge University Press). <http://journals.cambridge.org/action/displayJournal?jid=AHY>.

**Patrouch, Joseph.** Editorial Board Member and Early Modern Book Review Editor, HABSURG (H-Net)<http://www.h-net.org/~habsweb/>.

**Prugl, Elisabeth.** Associate Section Editor, Feminist Theory and Gender Studies Section, *International Studies Association Compendium Project*.

**Prugl, Elisabeth.** Editorial Board Member, *Politics and Gender*, the Journal of the APSA's Women and Politics Research Section.

**Rose, Suzanna.** *Sex Roles*, Editorial Board Member, reviewed 4 manuscripts in 2008-09.

**Rose, Suzanna.** Editorial Board for the International Journal for Women and Gender Research, 2007-present.

**Rose, Suzanna.** Editorial Board, Women's Forum

(Research Journal, Univ. of Sindh, Pakistan), 2007-present.

#### FILMS/MEDIA

**Stephens, D.** Interview with Njeri Santana for Urbanplaydates.com [live call-in online radio urban parenting issues program], broadcast on Blog Talk Radio, October, 16, 2008. Topic: Parents responding to images of African American women in Hip Hop culture.

**Stephens, D.** Interview with Paula Powell for Real Talk, Real Issues [live call-in radio minority issues program] broadcast on WMBM Radio AM 1490, October 11, 2008. Topic: The impact of negative images of African American women on their relationships with Black men.

#### NATIONAL SERVICE

**Patrouch, Joseph.** Elected to the Executive Committee of the Society for Austrian and Habsburg History.

**Rochelson, Meri-Jane.** Division Coordinator, Modern Jewish Literature, Association for Jewish Studies, Spring 2009.

**Rochelson, Meri-Jane.** President, Nineteenth Century Studies Association. Elected to second term in March 2009.

**Shrage, Laurie.** American Philosophical Association Ombudsperson for Nondiscrimination, 2008-2011.

**Shrage, Laurie.** Member, APA Committee for the Defense of the Professional Rights of Philosophers.

**Weeks, Ophelia.** Nominated by AAA's President Elect Kathy Jones to serve a three-year term as a member of the Henry Gray/Elsevier Distinguished Educator Award Committee (2009-2012), beginning April 2009.

**Weeks, Ophelia.** Member, Lippincott Williams Wilkins/AAA Education Research Scholarship committee (2007-2009).

**Weeks, Ophelia.** Chair, Lippincott Williams Wilkins/AAA Education Research Scholarship committee (2008-2009).

### **COMMUNITY SERVICES**

**Addy, Dawn.** Director, Center for Labor Research and Studies (CLR&S) Coalition for Working Women, 2007-2009. This group focuses on workplace rights and health and safety issues as they impact women.

**Addy, Dawn.** *A Portrait of Women in Miami-Dade*, collaborative research project with the Women's Fund of Miami-Dade County, 2007-present.

**Addy, Dawn.** *Women Confronting Conflict*, Working with Miami Alternatives to Violence Project (AVP), women in the South Florida Department of Corrections, and leading students and volunteers, ongoing.

**Barrett, Lynne.** Member, WS Faculty Advisory Committee (elected April 2009).

**Harrison, Kimberly.** Advisory Board, Center for Excellence in Writing, 2008-present.

**Harrison, Kimberly.** SACs Quality Enhancement Team Member, Spring 2008-present.

**Onorato, S.** Chair, Women in Student Affairs current research committee, March 2008 – present.

**Patil, Vrushali.** Women's Studies Department Representative, College of Arts and Sciences, Promoting Undergraduate Research Initiative, FIU, 2009.

**Pearson, Linnea.** Honored by the Zen Village Holistic Wellness Institute for her contributions to the work of the Institute headed by Zen Master Chufei Tsai. Heart for Humanity programs, Coconut Grove, September 2008.

**Pearson, Linnea.** Multi-Faith-Faith Prayer Service in celebration of the Inauguration of President Barack Obama at the Universal Truth Center in Miami Gardens in November. The event was attended by over 300 people of many faiths.

**Rochelson, Meri-Jane.** Associate Chair, Department of English, FIU, 2008-2009.

**Rochelson, Meri-Jane.** Advisory Committee member, Women's Studies Center, FIU. Elected Spring 2009.

**Rose, Suzanna.** Vice President, Miami-Dade Women's History Coalition, 2006-2009.

**Weeks, Ophelia.** Audience with President of the Republic of Liberia, Mrs. Ellen Johnson Sirleaf, in Monrovia, Liberia discussed issues on education in Liberia, with emphasis on the Medical School and medical students at A.M. Dogliotti School of Medicine, January 2, 2009.

**Weeks, Ophelia.** Member, Women's Studies Advisory Committee. Spring '07-present.

**Weeks, Ophelia.** Member, Women Studies Program Personnel Committee, Spring 2009.



**OPHELIA WEEKS**



## 2008-2009 WOMEN'S STUDIES GRADUATES (Summer 2008 - Summer 2009)

### Bachelor of Arts

Alexandra Burke  
Lisa Corey  
Jessica Doherty  
Maria Everman  
Janniree Gutierrez  
Ileana Hernandez  
Tiffany Herrero  
Araceli Leyva  
Marlene Long  
Andrea Lopez  
Lissette Matos  
Vanessa Negron  
Frances Ortiz  
Gabriela Raccah  
Susan Rainsberger  
Louise Reiter  
Maria Rivera  
Brittany Robinson  
Lynsey Sczechowicz  
Kimberley Thomas

### Undergraduate Certificate

Monica Duran  
Tiffany Cruz  
Alexandra Schneider  
Karen Loria  
Tiffany Muniz  
Jaclyn Heyen  
Danielle King  
Stephany Perez  
Cristina Caviedes  
Meliza Frias  
Tiffany Fajardo

### Graduate Certificate

Catherine Torres  
Genevieve Nrenzah



**Cruz, Tiffany.** (Sociology/Anthro./Women's Studies Certificate, Spring 2009). Tiffany received her undergraduate certificate in Women's Studies in Spring 2009. She plans to explore rehabilitation models used in treating substance abuse among adolescent females. Tiffany says about the Women's Studies Center:

*My time involved with the Women Studies program has allowed me to approach tasks with a sympathetic eye and a broadened perspective. My experience was nothing short of marvelous. The faculty and staff were all incredibly knowledgeable, attentive, and diligent in their pursuits to satisfy student's needs. In particular, I would like to recognize Dr. Lois West for her wonderfully effective classroom instruction and an open-door policy towards her students. She is truly a wonderful asset to the FIU community.*

**Hicks, Crystal** (Women's Studies/Sociology/Anthro., Spring 2008).

*I accidentally got into Women's Studies. This is not to say that it is not something that I was already passionate about, but it wasn't planned. I give all credit to Dr. Aurora Morcillo. I took her Introduction to Women's Studies class and felt like I was finally understood. I learned that I didn't have to be what was expected of me, and I could do anything and everything that I wanted. She is still one of my first sources of advice and I love her entirely. I also have to give praise to Dr. Dionne Stephens for the inspiration she gave me in her Psychology of Women class. She opened my eyes to the way that the world, both men and women, see and use women. She has been a great source for all of my research interests. The Women's Studies Center is one in which you feel accepted, not judged....understood. Everyone wants the best from you, and nothing less. I believe that we have a hand in changing the world. I plan to empower adolescent girls, and am working on designing a pre - and pro-college program for inner city high school girls.*



**Rainsberger, Susan** (Women's Studies, Psychology & English, Summer 2009).

*The Women's Studies Center at Florida International University is what I believe all education programs should be like. The program is very diverse and thorough in covering a plethora of social, cultural, educational, political, philosophical, theoretical, psychological, artistic, and religious topics. Being allotted the freedom of interdisciplinary study is what has turned me on the most about Women's Studies. There is often a misconception about Women's Studies and Feminism that has been challenging to confront in the workplace. However, the Women's Studies Center at FIU prepared me to face this challenge and have full confidence in transitioning my academic experience to the workplace. In June of 2009, I was offered a position with the Non-Violence Project USA, a local nonprofit organization, as the Executive Assistant. I've already received a promotion to become the Chief Administrative Officer, where I am charged with managing Human Resources, Public Relations and Media, Web Development, Volunteer Programming, and Marketing development. As a social service organization, we empower and prepare young men and women, who are confronted with a system of inequity, to be independent and responsible adults, inevitably deterring them from becoming a part of the cycle of poverty, violence and drugs. Outside of work, I have taken a recent interest in new age philosophy and spirituality and the sociopolitical impact on the ego. In my future, I plan to go back to school to complete graduate work, and to continue pursuing career opportunities that will further broaden my horizons and have a meaningful impact.*

## WOMEN'S STUDIES ALUMNI ACCOMPLISHMENTS

### tiffany

**Tiffany Herrero** (Women's Studies/Psychology, 2008). During Fall 2008, Tiffany humbly accepted her Phi Beta Kappa membership and graduated Magna Cum Laude after completing double majors in Psychology and Women's Studies. She was also recognized for her achievements and dedication to the Women's Studies Center at the 2009 College of Arts & Sciences Awards Ceremony. She is hoping to attend graduate school as soon as she settles in the DC area. Above all, her greatest achievement is raising her daughter, Sophia, in the spirit of sisterhood and embracing the philosophies which will eternally pave a foundation full of opportunity and equality for all women.



### taquesha

**Taquesha Brannon** (English/Women's Studies Certificate, 2006). Tequesha graduated Cum Laude with her B.A. in English from FIU in 2006. She is currently working on her Master's degree in Afro-American Studies with a concentration in Sociology at UCLA. She had a very successful first year in graduate school and has maintained a 3.9 grade point average. She is also enjoying her experience in Los Angeles. She won tickets to the 2009 Grammy Awards and walked the red carpet. Tequesha plans to enroll in a Ph.D. program after she graduates with her M.A. in 2010.



### chonti

**Valenzuela, Chonti** (Women's Studies/International Relations/Asian Studies, 2006). Chonti graduated with her M.A. in Women's Studies from George Washington University on May 16, 2009. She recently got engaged on Valentine's Day this year. She is currently trying to decide what Ph.D. program to pursue at GWU.





## zoila

**Zoila Yovanna Clark** (Spanish (Ph.D.)/Women's Studies Graduate Certificate 2009). Zoila defended her dissertation, "Reconceptualizing Female Sexuality in the Texts of Cristina Escofet and Isabel Allende: A Surrealist and Postmodern Approach" / "Propuestas para una reconceptualización surrealista y postmoderna de la sexualidad femenina en los textos de Cristina Escofet e Isabel Allende," on May 18<sup>th</sup>, 2009. Zoila has several publications in the field of Women's Studies including: "The Bird that Came out of the Cage: A Foucaultian Feminist Approach to Kate Chopin's *The Awakening*" (*Journal of Cultural Research*), "Entrevista a Cristina Escofet: Mujer, filosofía y nuevos paradigmas entre la razón y la intuición" (*Hispanet Journal*), "Cristina Escofet: por un feminismo caleidoscópico en Arquetipos, modelos para desarmar" (*Alba de América*), and "Eco-feminismo en la narrativa de María Luisa Bombal" (*Delaware Review of Latin American Studies*).

## felicidad

**Felicidad Garcia** (English/Women's Studies Certificate, 2005). Felicidad recently returned from 2 years in Peace Corps service in Cambodia. While in the Peace Corps, she had the pleasure of teaching English at a rural high school in Tany Village in the Kampot Province, and led HIV/AIDS workshops at the local brothel and orphanage. She was also a presenter at CamTESOL Conference 2008/09 and had the pleasure of traveling to Malaysia, Singapore, Laos, and Vietnam during her time off. She's happy to be back home among family, friends, and *frijoles negros* (black beans). Felicidad is currently working at FIU and she is completing pre-requisites for the Master's program in Speech and Language Pathology.



## student activities & achievements

### 200 SCHOLARSHIP: A SOCIETY OF PROFESSIONAL WOMEN, INC. 2009 Scholarship Winner

*Lis-Marie Alvarado*

The 200 Scholarship was donated by A Society of Professional Women, Inc., an organization of Dade County women from different professions. The group established this scholarship program for women students at FIU who demonstrate a strong ability and financial need. The award recognizes that women face multiple barriers to furthering their education. This scholarship is intended to help women students focus their attention mainly on education and career goals. The selection is managed by the Women's Studies Center. Lis-Marie Alvarado is the fourth recipient of this scholarship in the award amount of \$1,500.

Lis-Marie is an immigrant from Nicaragua. She is pursuing a double major in Sociology/Anthropology

and International Relations, a minor in Communications, and certificates in Latin American Studies and Women's Studies. Her goal is not only to increase her educational and job opportunities, but to also continue the fight for a reevaluation of traditional views of women's role in society and to continue a life of social-justice activism. Lis-Marie is also the host of "Madre Tierra," a Sunday radio program on FIU's Radiate 88.1 FM station. She is also the artist of the poster which will be featured on the cover of the Women's Studies student journal, *Making Waves*, Vol. 8.



Listen to  
The Sounds of  
Cultures that  
Respect  
The Earth

**MADRE TIERRA**  
Radiate FM



**Sundays**  
1-4pm EST

**88.1 95.3 96.9 FM**

**Online at WRCP.org**

**Myspace.com/Showmadretierra**



## student activities & achievements

### 2009 Women's Studies Student Conference

The theme for the 8<sup>th</sup> Annual Women's Studies Student Conference was "Seas of Change: Women and Gendered Bodies Riding the Waves." The event was sponsored and organized by the Women's Studies Graduate Student Association (WSGSA) and the Women's Studies Center. The all-day conference was a success with over 200 students, faculty, staff, and guests in attendance. Presenter panels included: Health & Gendered Bodies, Challenging Masculine Domains in Culture & the Arts, Women & Work, and Women, Sexual Objectification, & Physical Attractiveness. Students also displayed their artwork at the conference.

The WSGSA Distinguished Guest Lecture, Women on the Verge of a Political Breakthrough: Maitena Burundarena's Feminist Comic Strips, was given by Dr. Gema Pérez-Sánchez, of the University of Miami. The conference concluded with a special guest performance of Heather Raffo's "9 Parts of Desire" by the University of Miami cast, directed by Patricia Nolan.

### Conference Program

#### HEALTH & GENDERED BODIES,

Discussant: Dr. Laurie Shrage, *Women's Studies & Philosophy*

**Virgins, Modest Maidens, & Modern Women: The Hymen Discourse,** Kerstin Espinoza, *Sociology/Anthropology, History, & Women's Studies*

**Sexualized Medicine: The Medical Analysis of Prostitution in 19th Century Rio de Janeiro,** Camille Rivera Quebec, *Latin American & Caribbean Studies*

**Gender Differences in Addiction,** Tiffany Yeomans, *Women's Studies, Sociology, & African and African Diaspora Studies*

**Interrogating the Western Birthing Experience: A Feminist Perspective,** Christi M. Navarro, *Public Health & Women's Studies*

#### CHALLENGING MASCULINE DOMAINS IN CULTURE & THE ARTS,

Discussant: Dr. Whitney Bauman, *Religious Studies*

**Young Catholic Women Studies Organizations, 1950-1966,** Joseph Holbrook, *History*

**The Function of the Sacred Feminine in Shakespeare's Romances,** Ambar Meneses, *Psychology & English*

**I'm in the Band: A Study of the American Rock Feminine,** Elisa Meléndez, *Women's Studies Alumnus*

Performance: "Gotta Love Judy," Jaclyn Heyen, *Music Technology*

#### WOMEN, SEXUAL OBJECTIFICATION, & PHYSICAL ATTRACTIVENESS,

Discussant: Dr. Vrushali Patil, *Women's Studies & Sociology/Anthropology*

**Emerging Adult Hispanic Women's Beliefs About Skin Color's Values,** Alexandria Hernandez, *Psychology*

**Reflecting the Spirituality of the Vagina & the Decline for its Fortunes in Nzema Religious and Popular Thinking,** Genevieve Nrenzah, *Religious Studies & Women's Studies*

**The Scent of a Woman: A Content Analysis of Perfume Ads Executed Towards Women Based on Goffman's Gender Stereotypes,** Alessandra Rosa, *Sociology/Anthropology*

**Hypersexualization of Race & Gender: Portrayals of Latinas in American Film,** Maria Lopez-Boada, *Women's Studies*

**WOMEN & WORK,** Discussant: Dr. Aurora Morcillo, *Women's Studies & History*

**Uncovering the Uncovered: Feminism & "Working" Women,** Melanie Austin, *English & Women's Studies*

**The Influence of Parents' Work History on Female Leaders' Work-Related Attitudes,** Veronica Averhart, *Industrial/Organization Psychology*

**Perceptions of the Emancipated Woman: Stories from the Rebels,** Anne Braseby, *Sociology*

**Innovation & Gender: Technology-Based Music Therapy Developments,** Jaclyn Heyen, *Music Technology*

**African American Women's Domestic Work & Resistance Strategies in Literature & History, 1886-1926,** Ava Purkiss, *African & African Diaspora Studies*

#### STUDENT ART DISPLAYS

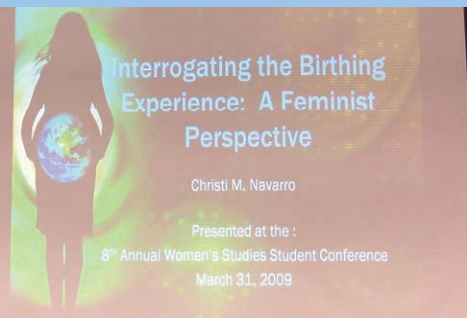
"Femininity" by Wendy X. Ordóñez, *Art Education*

"Memorias de una Viajera Enamorada" by Alessandra Rosa, *Sociology/Anthropology*

"Gemini" by Michelle Perez, *History & Women's Studies*

"Madre Tierra" by Lis-Marie Alvarado, *International Relations, Women's Studies*

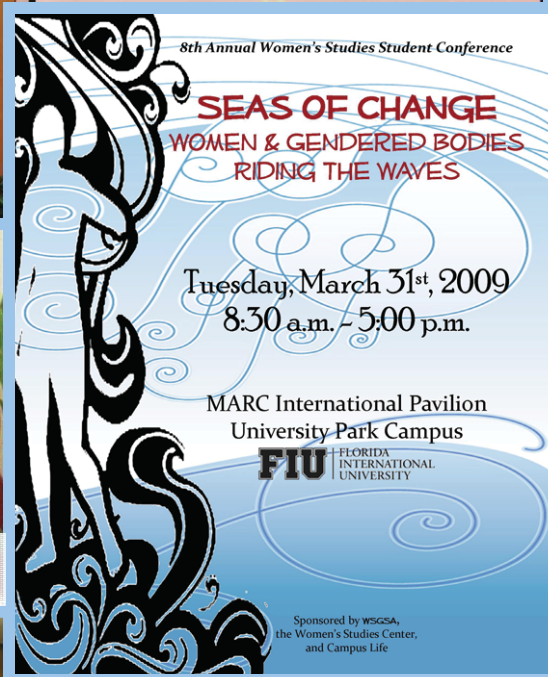
**Christi Navarro**



**Camille Rivera Quebec**



**María López-Boada**



**Melanie Austin**







**Elisa Melendez**



**Alessandra Rosa**



**Dr. Whitney Bauman**



**Jennifer Sheran & Ambar Meneses**



**Tiffany & Hashim Yeomans-Benford**



**Veronica Averhart**





Ava Purkiss

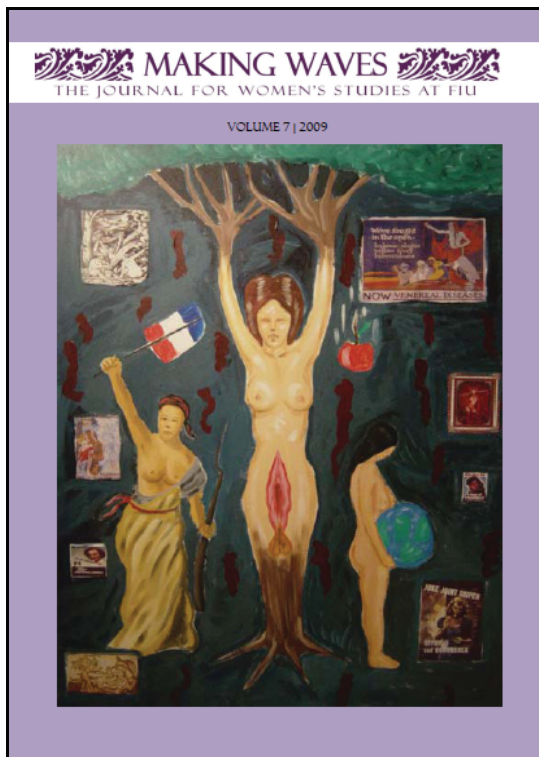
Jaclyn Heyen, Anne Brasby, & Dr. Aurora Morcillo

Dr. Laurie Shrager

All-day Student Art Displays

Dr. Gema Perez-Sanchez

## student activities & achievements



## MAKING WAVES

By Christi M. Navarro, Editor

*Making Waves* has gone through some other important changes for the 2008-2009 academic year: a new look! In addition to the new look, the journal, in an effort to "go green," we will be printing less copies and providing the full journal issue on the Women's Studies Center website. The online version of the journal will allow the articles to be accessed by our students and faculty for discussions in Women's Studies and other courses.

This year, we were fortunate to publish two issues of *Making Waves*. Volume 7, which came out in Spring 2009, is a collection of essays, artwork, and poetry from both undergraduate and graduate students who write on women and gender studies topics. I would like to thank WSGSA for raising funds for the printing of the journal.

Most of the essays and artwork found in Volume 8 of *Making Waves* are from the 8<sup>th</sup> Annual Women's Studies Student Conference, "Seas of Change: Women and Gendered Bodies Riding the Waves." The very talented associate editor, Susan Rainsberger, did an outstanding job on this edition of the journal during her summer internship with the Women's Studies Center. I would like to personally thank her for her dedication to *Making Waves*.

## MAKING WAVES, vol. 7

### EDITOR

CHRISTI M NAVARRO

### SPONSORS

WOMEN'S STUDIES GRADUATE STUDENT ASSOC.  
WOMEN'S STUDIES CENTER

### Student Essays

Reinterpreting the Anita Bryant Story: How Massive Resistance Politicized the Gay Rights Movement in the United States, *Julio Capó*

D'Aragona's Actualized Woman: A Dramatic Interpretation, *Britney Lipton*

The Social Importance of Looking Good: Media Images and Self-Objectification in Women, *Christi M. Navarro*

Indigenous Religious Belief and Practice in the Ghanaian Pentecostalism: The Mame Wata Healing Churches of the Half Assini, *Genevieve Nrenzah*

The Black Market: America's Exploitation of the Black Female Body, *Tiffany Yeomans*

Stereotypes of Women in Music Videos, *Guadalupe Zelaya*

### Student Art

*Gemini*, *Michelle Perez*

*Perhaps You Could and Blue Worry*, *Kim Yantis*

### Student Poetry

*Beauty Beneath*, *Tiffany Yeomans*

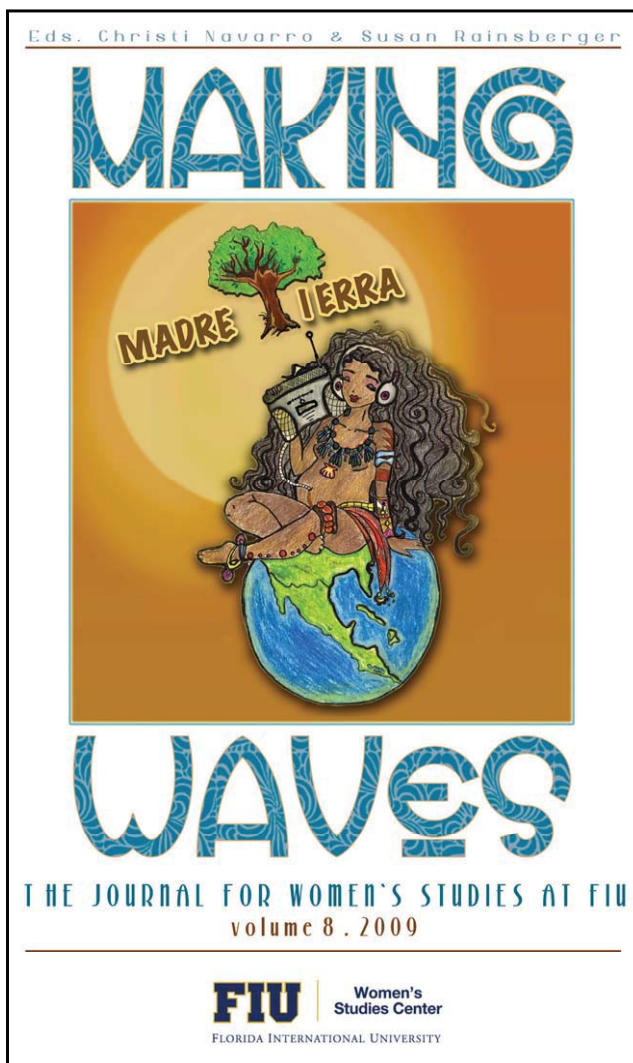
*Hurricane in the Quiet*, *Larissa Porta*

### WSGSA Distinguished Faculty Interview

Interview with Dr. Maria Logroño, *Paula de la Cruz- Fernández*

*As an illustration of the soul of the Women's Studies Center at FIU, Making Waves not only creates opportunity for students to express themselves and their views of the world, it reflects the diversity and creativity that Women's Studies envisions.*

- Susan Rainsberger, Associate Editor vol. 8



## MAKING WAVES, vol. 8

### EDITORS

SUSAN RAINSBERGER  
CHRISTI M NAVARRO

### SPONSOR

WOMEN'S STUDIES CENTER

### Student Essays

The Function of the Sacred Feminine in Shakespeare's Romances, *Ambar Meneses*

Virgins, Modest Maidens, and Modern Women: The Hymen Discourse, *Kerstin Espinoza*

Women's Sociopolitical Fertility in America (1900-1940): Eugenics and Female Reproductive Control, *Susan Rainsberger*

Uncovering the Uncovered: Feminism and "Working" Women, *Melanie Austin*

Interrogating the Birthing Experience: A Feminist Perspective on Women's Choice in Childbirth, *Christi Navarro*

African American Women's Domestic Work and Resistance Strategies (1886-1926), *Ava Purkiss*

The Influence of Parents' Work History On Female Leaders' Work-related Attitude, *Veronica Averhart*

Women Innovators: Technology-Based Music Therapy, *Jaclyn Heyen*

I'm In the Band: A Study of the American Rock Feminine, *Elisa Melendez*

### Student Art

Femininity, *Wendy Ordóñez*

Essentially the Kind of Sense, *Nathan Delinois*

Flames to Dust, *Alessandra Rosa*

Deconstruction, *Alessandra Rosa*

Madre Tierra, *Lis-Marie Alvarado*

### Distinguished Faculty Interview

Dr. Andrew Strycharski, Susan Rainsberger



## student activities & achievements

# 2009 Vagina Monologues

*The Vagina Monologues* is a unique annual event that not only touches the minds and hearts of those who come see it, but also touches those whose lives have been affected by violence and turn to our chosen beneficiaries for help. It is a play that fosters conversations and allows us to contribute to building a nonviolent culture, while healing the wounds already created.

The Vagina Monologues at Florida International University is a growing tradition for the Women's Studies Student Association. WSSA's third annual production of *The Vagina Monologues* was a huge success; the students performed to almost sold-out crowds on February 13, 14, and 15. They raised \$6,130 to support V-Day campaigns to stop violence against women and girls worldwide, and to support FIU's Victim Advocacy Center and the Women's Studies Center. In fact, the 2009 production raised more money than previous years and was able to benefit a new local charity, Kristi House's CSEC Project.

The entire cast gave outstanding performances, and received standing ovations and much applause. As the fourth year approaches, WSSA will strive to make a bigger difference and find new ways of contributing to the community.

*“It was really an amazing and rewarding journey for everyone and we hope to continue influencing the lives of women in a positive way.”*

– Guadalupe Juarez, WSSA Secretary

### 2009 CAST & MONOLOGUES

Hair – *Alexandra Schneider*  
 The “Wear and Say” Lists – *Ambar Meneses, Gabriele Swinger, & Natalie Levy*  
 The Flood – *Jessica Katz*  
 The Vagina Workshop – *Veronique Nydam*  
 Vagina Happy Fact – *Lis-Marie Alvarado*  
 Because He Liked to Look At It – *Bree Smith*  
 Not-So-Happy Fact – *Lis-Marie Alvarado*  
 My Angry Vagina – *Christine Vera*  
 My Vagina Was My Village – *Adriana Rodriguez*  
 The Little Coochi Snorcher That Could – *Natalie Levy*

Outrageous Vagina Fact – *Lis-Marie Alvarado*  
 Reclaiming Cunt – *Karen Pangantihon*  
 A six-year-old girl was asked... – *Begoña Saiz*  
 The Woman Who Loved to Make Vaginas Happy – *Karen Pangantihon*  
 I Was There In the Room – *Vanessa Santana*  
 2009 Spotlight – *Adriana Rodriguez*  
 Narrator - *Ayesha Naseer*

### 2009 VDAY PRODUCTION TEAM

Director: *Guadalupe Juarez*  
 Assistant Director/Stage Manager: *Leonna Murray*  
 Producer: *María López-Boada*





# WOMEN'S STUDIES

Each of the following students worked at different sites or on projects where they gained practical application and opportunities outside of classroom learning.

<u>Intern</u>	<u>Internship Site</u>	<u>Site Supervisor</u>
<b>Spring 2009</b>		
Desiree Llopiz	Women's Center	Suzanne Onorato
<b>Summer 2009</b>		
Amal Ardito	XX Radio	Claudia Santos
Maria Cueva	Telemundo	Eugenia Perez
Eloisa Granado	Planned Parenthood	Emily Caponetti
Susan Rainsberger	Making Waves	Christi Navarro
Vanessa Santana	Break Away	Alternative Breaks





# INTERNSHIPS

## XX RADIO

During the summer of 2009, "XX Radio" was born. Amal Ardito and Chaundra Whitehead were the students enrolled in the radio internship course. They worked on all aspects of producing a radio show: researched issues, searched for guests, scheduled interviews, as well as hosted them. Claudia Santos directed the show. During the summer they were able to interview 13 guests, among them Mayor Cindy Lerner, Professor Jose Gabilondo (Associate Dean, College of Law), Professor Seth Bramson, Florida Historian, among others.



From Left to Right: Chaundra Whitehead (intern), Mayor Cindy Lerner (Pinecrest), Claudia Santos (XX Radio Director), and Amal Ardito (intern).

XX Radio will be launched in the fall 2009 on the student-run station, FIU Radiate, FM 95. 3 (stay tuned for an announcement about the day/time). "XX Radio" will provide a

forum for discussion of women and gender issues, with intelligent, insightful perspectives, and will invite the Dade County community to participate in the discussion.



## CLAUDIA SANTOS

Claudia has been working as an independent producer and filmmaker for the past decade. She has honed her craft by producing, directing and hosting academic and commercial videos in Brazil and in the United States. As an independent filmmaker, she produced and hosted the Brazilian segments for the Latin American series "Successful Women in Latin America". In the United States she continued her independent film work: At Cornell University, she produced videos for the International Student Programming Board, and she hosted and produced student videos such as "Latinos at Cornell". Claudia also worked at The Discovery Channel, Time-Warner (Pegasys), and Univision as well as various production houses. In 2008 she finished a Master degree in Intercultural/ International Education at Florida International University. For the past year she has been teaching at the Florida Film Institute, and she is now directing "XX Radio Show" for the Women's Studies Center at FIU- a show about people on the cutting edge of gender issues. Through film, radio, and video she wants to create a dialogue for our universal shared experiences.

## student activities & achievements



**October.** Celebration of Feminism for Women's Empowerment Week. Passerbys took a quiz composed of historical facts on the women's movement. The ramen display shows how many Cup Noodles one could buy for the price of one month's supply of birth control. We had several boards documenting the contribution of the women's movement.



**November.** Clothing drive for the Lotus House Women's Shelter.

**December.** Toy Drive for Kristi House (<http://kristihouse.org>). Every year Kristi House holds a Christmas party for its clients, and for the last two years we have donated toys for the children attending this event.



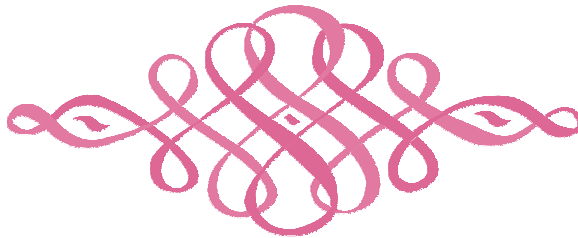
# Women's Studies Student Association

**January.** Film screening of Sundance favorite *Until The Violence Stops*, which chronicled how Eve Ensler's hit Broadway solo show *The Vagina Monologues* grew into V-Day, an international grassroots movement.

**February.** Teach-in on The Democratic Republic of Congo - V-Day's 2009 Spotlight Campaign focuses on the women and girls of the Democratic Republic of Congo (DRC). The atrocities being perpetrated against women and girls in the DRC are nothing less than a femicide - the systematic destruction of the Congolese female population. We gave a lecture put together by The Enough Project, V-Day and STAND (A Student Anti-Genocide Coalition) on the situation in the DRC.



Adriana Rodriguez performing her monologue piece on the DRC at the Congo Teach-in.



## THE VAGINA MONOLOGUES.

The total amount raised was \$6130. WSSA divided the proceeds between four organizations: FIU's Women's Studies, FIU's Victim Advocacy Center, Kristi House's CSEC Project, and the V-DAY campaign. V-DAY received 10% of the proceeds (\$610 dollars) and the other three received \$1840.



Lupe and Grettel selling vagina pops to fundraise for The Vagina Monologues at the screening of "Until the Violence Stops."



## student activities & achievements



By Christi Navarro

2008-2009 WSGSA Vice-President

### WSGSA had an extremely productive academic year!

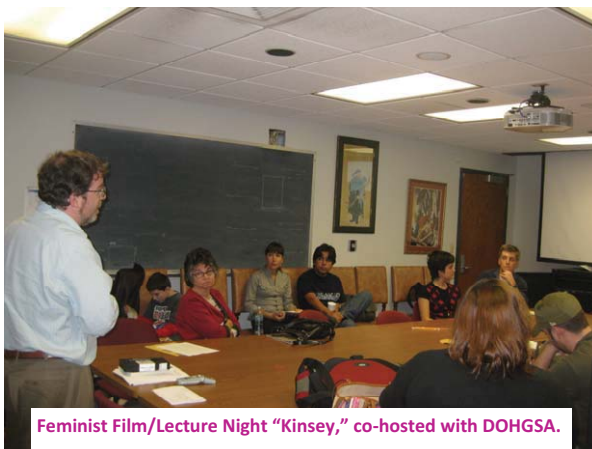
In the Fall semester, we coordinated a Feminist Film night series which included films like "Kinsey," "Boys Don't Cry," and "Made in LA." Our writing group also met to assist WSGSA and other graduate students with their writing assignments. We also collaborated with other FIU organizations and their events: Women's Studies Center (Women of Distinction series), Graduate Student Organization (GradsKellar), and DOHGSA ("Kinsey" film night).

Spring semester was the busiest semester we've ever had! In the early part of the semester, we coordinated a very successful clothing drive for the Lotus House Women's Shelter ([www.lotushouseshelter.org](http://www.lotushouseshelter.org)) and collaborated with WSSA in the Vagina Monologues production. In the latter part of the summer, we organized the 8<sup>th</sup> Annual Women's Studies Student

Conference which was attended by over 200 FIU students, faculty, staff, and guests. In partnership with the University of Miami, we invited Dr. Gema Perez-Sanchez as a visiting lecturer and the cast of Heather Raffo's "9 Parts of Desire" to perform at the conference. We hope to continue our outreach to the University of Miami Women's Studies department in the future.

As a result of the amazing achievements above, WSGSA was able to raise almost \$3,000 in special allocations money from the Council for Student Organizations (CSO). This money was used to fund the entire student conference and the printing of the *Making Waves* Journal (Vol. 7).

I would like to thank our departing WSGSA President, Paula de la Cruz-Fernández for her devotion to WSGSA this year. I would also like to thank the Women's Studies intern, Susan Rainsberger, for WSGSA's long awaited logo (above). We look forward to an even more productive 2009-2010 Academic Year!



Feminist Film/Lecture Night "Kinsey," co-hosted with DOHGSA.



WSGSA hosted Fall GradsKellar (left to right): Ashley Matiero, Jennifer Sheran, Paula de la Cruz-Fernandez, and Julio Capo.

Paula and new WSGSA member, Jessica Allison.



WSGSA board receiving recognition award from the Women's Studies Center at the Spring Gala.



**WSGSA**  
women's studies graduate student association

**PROJECT: EMPTY HANGER**  
WSGSA Clothing Drive

You can help homeless women and their children by donating essential necessities.

WSGSA is collecting new and gently used clothing for the women of the Lotus House Women's Shelter. Please help us provide support to the Lotus House's work to empower women and children most in need to become whole again. For more info, visit: <http://lotushouseshelter.org>

**February 9 - March 9**

On Friday, March 13, we'll distribute your donations.

Paula & Christi on their way to Lotus House to drop off a truck-load of donations!



Attentive at the conference! (left to right): Ashley Matiero, Christi Navarro, Camille Rivera, and Kerstin Espinoza



UM's "9 Parts of Desire" cast performing select monologues.





## Community Outreach & Extra-Curricular Activities







## WOMEN'S STUDIES BOARD OF ADVISORS 2008-2009

*The Florida International University  
Women's Studies Center Board of  
Advisors continued to increase its  
support of the program during its  
fourth year. Together, these  
distinguished women contributed  
greatly to the success and growth of  
Women's Studies.*

**Mary Lou Pfeiffer** served on the Advisory Board in the College of Arts and Sciences at FIU and the Board for the FIU Center for Spirituality as well as the Women's Studies Board of Advisors. She was the contributor of the Helen J. Dunnick Endowment to teach American Indian Studies at FIU. She received a LL.M. in Intercultural Human Rights from St. Thomas University School of Law and a Master's Degree in Religious Studies from FIU. She is the owner and operator of Pfeiffer Originals art glass studio, President and partner in Caressa-me, an aromatherapy company, and a recipient of the FIU Alumni Torch Award.

**Marjorie H. Adler** is Human Resources Director for the City of Coral Gables (2004-present). Previously, she was Chief Personnel Officer of Human Resources for the Miami-Dade County Public Schools (2003-2004) and for the school district of Philadelphia (PA) (1997-2002). She

has extensive management experience in the private sector as well. Her areas of expertise include labor relations and recruitment strategies, organization development, and risk management. Previously a 40-year resident of Philadelphia, she was very active in the wider community, particularly in women's issues and cultural affairs.

**Carol Alexander** is Founder and President of Carol Alexander, C.P.A., PA, a public accounting firm serving the South Florida business community, providing income tax planning and preparation as well as business evaluations. She serves on the boards of several professional and not-for-profit organizations. She also served two years as Club President of the Rotary Club of Miami Sundown. Among her personal interests are fitness, music and art.

**Maria Anderson**, Vice Mayor & Commissioner, City of Coral Gables, FL. Ms. Anderson is a Board Member of the Urban Environment League and a Commission Representative for the Coral Gables Chamber of Commerce. She spearheaded a successful community visioning process for the revitalization of downtown Coral Gables, co-sponsored with the University of Miami School of Architecture.

**Elizabeth Baker** is a lawyer with Baker & Cronig, LLP (family, real estate, banking and business law). She has been continuously certified by the Florida Bar in Marital and Family Law. She has been actively involved in Safespace Foundation, a private charity which supports the Miami-Dade County shelters for battered women and their children, for over 25 years. In 2006, she was recognized by the Florida Association for Women Lawyers, Miami-Dade County chapter, with the Mattie Belle Davis Award. Her personal interests include the study of Shakers, a utopian religious sect, and collecting vintage costume jewelry.

**Glenda (Rusty) Belote, Ph.D.** is the retired Associate Dean of Undergraduate Studies at Florida International University. She served for many years on the Women's Studies Faculty Board, the FIU Title IX Committee (concerned with equity in women's sports), and the Women's Center Board (Student Affairs Division). She also developed and taught a popular interdisciplinary course, Gay and Lesbian in the U.S.

**Ann (Annie) Goodrich** retired from FIU recently but is still active with Women's Studies and at the University. She received numerous awards during her many years of service, including the Outstanding Employee of the Year Award from FIU in 1988 and 1995 and the FIU United Way Volunteer of the Year award in 1996. She was the University of Miami Medical School Woman of the Year in 1990 for her outstanding efforts in building the Ronald McDonald House at Jackson Memorial Hospital. The FIU Executive Council in 1997 named an award in her honor, the Ann H. Goodrich Volunteer of the Year Award.

**Lynda Esserman** is a Women's Studies major and benefactor. She was the hostess of the Spring 2008

Women's Studies gala.

**Maria Millheiser** is a benefactor and Women's Studies alumna. Her early career was in nursing. After raising a family, she returned to FIU to complete her undergraduate degree in 2006. She is committed to helping other women gain the knowledge they need to grow and thrive, as well as to protect themselves.

**Pat Klock Parker**, Broker-Salesperson, has been with The Klock-Parker Real Estate Group at Coldwell Banker since 1977. She was a top Real Estate Broker-Agent, selling homes in Coral Gables, Coconut Grove, Pinecrest, South Miami and East Kendall. She was a charter member of the Master Broker's Advisory Board of the top 200 agents in Dade County and the International President's Elite top 5% of Real Estate Agents in the Country. She was a past Board of Directors member of the Miami Choral Society and past parent board member of Carrollton School of the Sacred Heart. She and her husband are actively involved at Epiphany Parish.

**Carolina Rendeiro** is Founder and CEO of Business Centers International in Coral Gables and Brickell, a concierge-type service that provides customized workspaces, offices, and lobby and conference rooms that create a luxurious, high tech, executive business environment. She is the Chairman-elect of the Coral Gables Chamber of Commerce.

**Helen Venero** has been in the scientific instrumentation industry for 29 years. She currently is president of VTI Corporation, based in Hialeah, Florida, a small company that designs, manufactures and markets scientific instruments all over the world. Venero's educational background reflects her many interests over the years: Spanish literature, social work, and business. The importance of entrepreneurial skills and the support and mentoring of women in business has been of great interest.



**Annie Betancourt** epitomizes the consummate change agent. She is a graduate of University of Miami and attended the Senior Executive Program at Harvard's Kennedy School of Government. Also, Ms. Betancourt is a former member of the Florida House of Representatives (1994-2002) and Democratic nominee for Florida's 25<sup>th</sup> Congressional District. Her experience allowed her to work across diverse political, social, cultural and economic lines. The time she spent in the Florida Legislature was highly productive because she championed laws that foster job opportunities and economic development, promoted changes that facilitate access to higher education through scholarships and fought public corruption in several fronts along with law enforcement agencies. In 2002, as the Democratic nominee for the new 25<sup>th</sup> Congressional District in Florida, Annie was not afraid to address thorny issues that had impacts at the national and international levels, including a revision to current U.S. policy on Cuba. Betancourt has overcome adversities herself such as breast cancer and losing her husband. Today she lives a happy life in Coral Gables with her daughter RYANNE. She participated as a panelist in this year's Women Who Lead Conference at FIU.

**Gayle Bainbridge** has made a career as an insurance agent in Coral Gables after her graduation from FIU in 1975 with a Bachelor of Arts in English. She currently is Vice President of Elliott, McKiever & Stowe, Inc., insurance company. She serves on the Boards of the FIU Alumni Association, UM Friends of Music, and was Chairman of the Coral Gables Chamber of Commerce. Ms. Bainbridge was the 2006 recipient of the Thelma Gibson Excellence Award for Leadership from the Miami-Dade Women's Chamber of Commerce. Her hobbies include traveling, gardening and reading.

**Marie Birts** is the South Miami Commissioner and a Women's Studies benefactor.

**Roberta Fox, P.A.**, Chair, Lawyer and Shareholder for the Law Offices of Roberta Fox. Ms. Fox served as Florida State Senator from 1982-1986 and Florida State Representative from 1976-1982. She was a pioneer in family law reform, equal educational opportunity, employment background screening legislation, and changes to the evidence code concerning testimony by young crime victims. She has received the 1973 One of Ten Outstanding Young Women of America Award, the 1986 Florida Women's Lawyers Association's Judge Mattie Belle Davis Award for service, the 1996 Women of Impact VIII Award, and a 2004 Pioneer Award from Miami-Dade County.

**Evelyn Langlieb Greer** is an attorney with Hogan, Greer & Shapiro, P.A., and was elected as the Miami-Dade County School Board Member from South Miami-Dade in 2004. She was the founding mayor of the Village of Pinecrest from 1996-present. Ms. Greer was also President of Greer Properties, Inc., a Director of City National Bank of Florida, N.A. from 1998-present, a Trustee of Barnard College, Columbia University, NY, from 1995-2004, the Vice Chair for the Board of Visitors, Columbia Law School from 1996-present, Director of Our Kids, Inc., the Miami-Dade foster care umbrella organization, and a Director of the Miami Performing Arts Center.

**Diana Parker** is Director of Office Brokerage at Cushman & Wakefield of Florida, Inc. Cushman & Wakefield is the world's largest privately held real estate services firm. It delivers integrated solutions by actively advising, and managing on behalf of Landlords, tenants, and investors through every stage of the real estate process.





## ROBERTA FOX, IN MEMORIAM

Roberta Fox's life exemplified the values at the core of Women's Studies Programs. We learned from her that women can challenge the status quo and male-dominated power structures at the highest levels in our society. As a lawyer (when most women didn't study law), as a legislator (when most women didn't run for office), and as a tireless advocate for the young and poor, Roberta Fox was a model of an engaged and passionate woman leader.

While others had made it around barriers for women, Roberta broke down those barriers, so that other women could come streaming through. Roberta was full of dreams and hopes, and was never stopped by the words, "women just don't do that."

Roberta was a founding member and the first chair of our Women's Studies Advisory Board, and a dear and generous friend to many in our program. She fought for the rights of women and children, not out of bitterness and rancor, but with a sense of joy and humor. It is that spirit that we remember her.

*- Aurora Morcillo, Associate Director, Women's Studies*

*For her obituary in the Miami Herald, please see:*

*<http://www.miamiherald.com/news/obituaries/story/1180483.html>*

"As Founding Chair of the FIU Women's Studies Donor Board of Advisors, Roberta's stature attracted many notable community leaders in 2003-04 to join the Founding Board. The Board under her leadership and with her membership contributed greatly to fundraising and scholarships. Roberta was an inspiration to Board members, faculty, and students alike. Hers was a voice that could not be ignored. Her courage was an inspiration to all. The tales of her years in the legislature in Tallahassee and of her legal work reminded students of both how far women had come and how far there was still to go to attain equal rights. She challenged students to realize their responsibility and role as feminists and activists and motivated them to lobby for the passage of the Equal Rights Amendment during the annual Women's Studies trip to Tallahassee. She will be remembered by FIU Women's Studies, in sisterhood, as a leader, advocate, mentor, and friend."

*- Suzanna Rose, Senior Associate Dean for the Sciences, College of Arts & Sciences*

# WOMEN'S STUDIES DONORS



*The success of the Friends of Women's Studies fund-raising drive enabled our students to acquire valuable educational experiences outside the classroom and lent support to other Women's Studies events. Women's Studies Donations from friends and corporate sponsors funded scholarships, student travel to professional conferences, and outreach activities. The Friends' donations were greatly appreciated. Below are the friends we received donations from for the 2008-2009 Academic Year.*

## ELAINE GORDON SCHOLARSHIP ENDOWMENT

The Elaine Gordon Scholarship Endowment was established in 1999 to honor the life and work of Elaine Gordon (1931-2000). Ms. Gordon was a pioneering feminist elected to the Florida House in 1972 who was a leading advocate on issues involving health care, mental health, children and women's reproductive rights. In 1982, she was one of the first six women inducted into the Florida Women's Hall of Fame in Tallahassee. After

retiring from the legislature in 1994, Ms. Gordon worked for FIU as an Assistant Vice President until 1999.

Seven donors contributed \$6,790.60 to the endowment this year. Their generous contribution makes it possible for one Women's Studies student to receive a scholarship each year. Recent donors are listed on the next page. The Gordon endowment now stands at about \$79,000.



### 2008-2009 ELAINE GORDON SCHOLARSHIP DONORS

*Elizabeth & Seth Gadinsky*

*Brian Gadinsky*

*Adrienne diPrima*

*Meri-Jane Rochelson*

*Kathleen Close*

*Molly Harris*

*Barbara Shulman for the Brian Friedman family*



# FRIENDS OF WOMEN'S STUDIES

Lourdes Acevedo  
Dawn Addy  
David Albury  
Irma Alonso  
María Aysa-Lastra  
Yvonne Bare Montalto  
Doris Bass  
Pascale Becel  
Ana María Bidegain  
Elaine Bloom  
Consuelo Boronat  
Elisabeth Brady  
Natalie Brown  
Deanne Butchey  
Bob Callahan  
Sherwood Cantor  
Carol Cohan  
Paula Cook-Ehrlich  
Serena Cruz  
Ginette Curry  
Nanci Deutsch  
Joyce Elam  
Patricia Elias  
Catherine Fahringer  
Jackie Farah  
Jose Gabilondo  
Paul & Joan Gluck  
Barbara Goldin  
Christine Gudorf  
Molly Harris  
Elizabeth Hernandez  
Susan Himburg

Marilyn Hoder-Salmon  
Tometro Hopkins  
Susan Jay  
Rosa Jones  
Sallye Jude  
Tara Kai  
Nilza Kallos  
Betsy Kaplan  
Suzanne Keeley  
Judy Kilburn  
Joanne Kirchoff  
Suzanne Koptur  
Joanne Koren  
David Lawrence  
Cathy Leff  
Rochelle Levin  
Felice Lifshitz  
Kenneth Lipartito  
Frances MacIntyre  
Margaret McCaffery  
Kathleen McCormack  
Raul Moncarz  
Aurora Morcillo  
Adriana Moreno-Zarate  
Marilyn Nepomechie  
Trudy Novicki  
Suzanne Onorato  
Edith Osman  
Janat Parker  
Vrushali Patil  
Joyce Peterson  
Suzette Pope

Elisabeth Prugl  
Nicol Rae  
Kathy Ramsey  
Jennifer Richards  
Maria Roberts  
Ana Roca  
Meri-Jane Rochelson  
Suzanna Rose  
Cynthia Russo  
Helen Salazar-Realini  
Jose & Danneliz Segrera  
Ana Sejeck  
Laurie Shrage  
Ellen Siegel  
Isabel Sifuentes  
Milenda Sinnreich  
Dionne Stephens  
Judith Stiehm  
Danielle Strickman  
Melissa Tapanes  
Sheila Taplin  
Anitra Thorhaug  
Ann Van Baalen Travis  
Marilyn Udell  
Nan Van den Bergh  
Victoria Villalba  
Diane Volrath  
Bernice Waldman  
Sue Wartzok  
Ophelia Weeks  
Julie & Bob Williamson  
Margaret Yoder



# 2008-2009 CORPORATE GIFTS

## **Coldwell Banker Cares** (*Patricia Parker*)

Publication of *Making Waves Journal*

Domestic Violence Awareness

## **Organics 101 Inc.** - (*Clarisse Bisset, owner*)

In kind Donation of Supplies



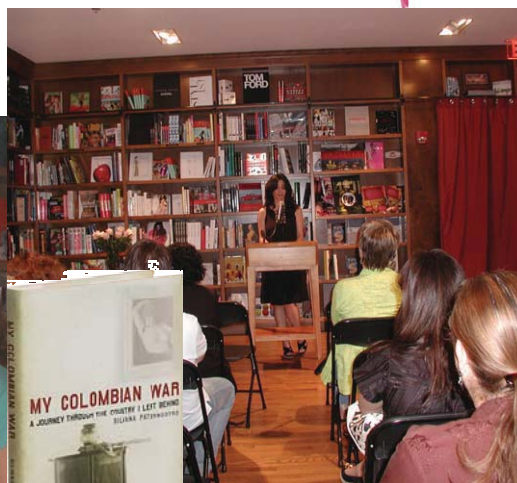
This check was a \$1,000 donation that we received from Coldwell Banker Cares to buy films for our courses on domestic violence and to support the publication of our annual student journal, *Making Waves*. Thank you to our board member Pat Klock Parker for helping us get these funds.

# WOMEN OF DISTINCTION

## LECTURE SERIES



**Florence Shu-Acquaye**  
*Women, The Law and HIV/AIDS in Africa*  
 September 30, 2008



**Silvana Paternostro**  
*My Colombian War*  
 November 7, 2008

**Vrushali Patil**  
*Negotiating Decolonization in the United Nations*  
 &

**Kathleen Martin**  
*Discarded Pages: Araceli Cab Cumi, Maya Poet and Politician*



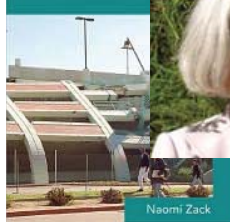
**Meri-Jane Rochelson**

*A Jew in the Public Arena:  
The Career of Israel Zangwill*



Co-sponsored with  
the Wolfsonian-FIU  
and Institute for  
Judaic Studies.  
January 11, 2009

**Ethics for  
Disaster**



**Naomi Zack**  
*Ethics for Disaster*

Co-sponsored with  
Philosophy and  
Political Science  
January 29, 2009

**Olivia A. Scriven**

*"Untold Narratives: The  
Struggle to Educate  
African American  
Women in Science,  
1950-1997"*

Co-sponsored with the  
History Department  
February 27, 2009



**Tatiana  
Butovitsch  
Temm**

*"When You Meet  
the Expectations of  
Women, You  
Exceed the  
Expectations of  
Men"*



Co-sponsored with the FIU's Wolfsonian-FIU,  
European Studies Program, and the FIU/UM's  
European Union Center  
March 26th, 2009



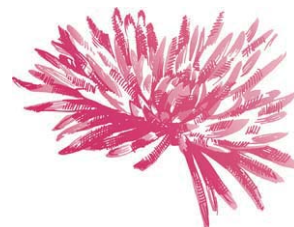
**Linnea Pearson, "Women As Healers"**

Co-sponsored with the Center for the Study of Spirituality  
Mar. 12, 2009





# WOMEN'S STUDIES EVENTS



## **A Conversation with Middle Eastern Women, October 28, 2009**

The Middle East Studies Center/SIPA at FIU hosted a delegation of professional women from the Middle East who will be speaking to us on a wide range of issues affecting democracy and women's empowerment in the region.

Leila Hadjarab (Algeria), Lawyer, Member of Algeria's Rally for Culture and Democracy (RCD) Party National Bureau.

Laurice Chinder (Lebanon), Ministry of the Economy in Tripoli, President of the Lebanese Council for Violence against Women.

Sarah Bou Sleiman (Lebanon), Public Relations Officer on the Women's Committee in the Lebanese Forces (LF) Party.

Asmaa Debbagh Boutarbouch (Morocco), Private Physician, Member of Casablanca's Local Elected Council.

Laila Amili (Morocco), Senior Attaché to the House of Representatives for the Socialist Union of Popular Forces (USFP) Party.

Rasha Hefzi (Saudi Arabia), Public Relations Representative for the German Foundation for Technical Cooperation in Jeddah.

Om Alkhair Al-Saaidi (Yemen), Chief of Social Affairs at the local ministry, Local Council Member for the General People's Congress (GPC) Party in Aden.

Zahra Chagaf (Morocco), Member of the Moroccan Parliament, Member of the Political Bureau of the Popular Movement.

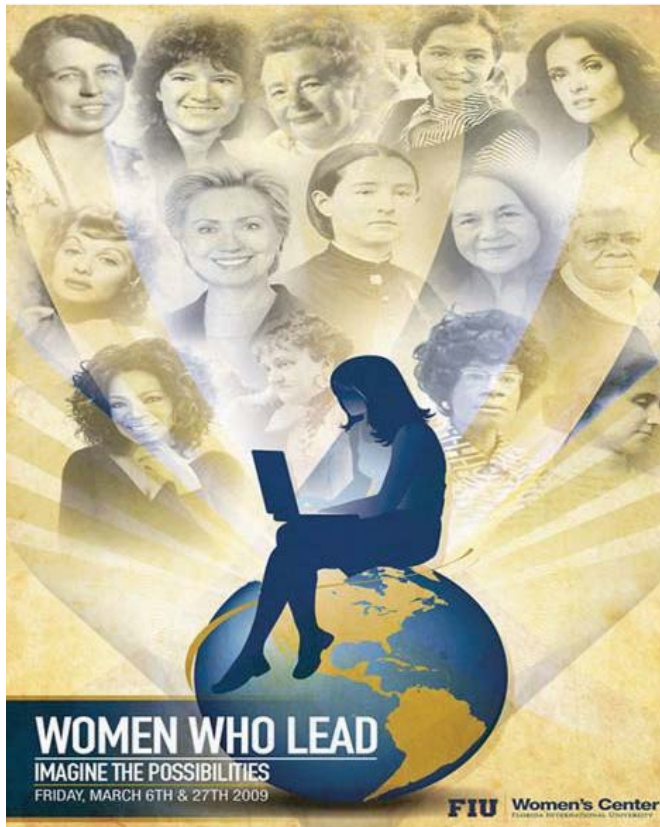


## **Whitney Bauman**

"Women, Nature, and the Liberation of Life"  
Co-sponsored with the Women's Park  
January 21, 2009

## **Kia Lilly Caldwell**

"Transnational Black Feminism in the 21st Century: Perspectives from Brazil"  
Co-sponsored with FIU's African and African Diaspora Studies  
March 6, 2009



## FIU's Women's Center: WOMEN WHO LEAD CONFERENCE

Keynote Speaker: Lindsay Hyde, founder and president of Strong Women, Strong Girls

*Women Who Lead* is a day-long conference designed to further enhance the leadership development of female students at FIU. To accomplish this, the conference has three parts; (1) to promote awareness about the scope of women in leadership in our society today; (2) to assist our female student leaders in developing a strategic plan for their leadership development; and (3) to provide an opportunity for our students to network with women in the community who serve as leaders, and connect them to community resources.

*Co-sponsored with FIU's Women's Center and College of Arts and Sciences.*

The Women's Studies Center hosted a panel called: **"Taking the Reins in Politics and the Sciences"** with (left to right) Annie Betancourt, Laurie Shrage, Ophelia Weeks, and Kania Sanchez.





# SPRING GALA '09

*The Third Annual Women's Studies Spring Gala was held in April at the Frost Art Museum. The event included a tour of the museum with new director Dr. Carol Damian and music by FIU Women's Studies Alumna, Elisa Melendez, and her husband and Evan Lamb. More than 100 people attended the gala and \$2,610 was raised for Women's Studies Scholarships.*

## Community Outreach & Extra-Curricular Activities



CAS Senior Associate Deans Suzanna Rose and Nicol Rae.



Friends of Women's Studies Kay Fahringer and Dotty Waldman.



WS Alumna Elisa Melendez and her husband delight us with their musical selections



Professor Mar Logrono smiles for the camera



WSGSA members Paula de la Cruz Fernandez and Jessica Allison





Bernice Waldman, Friend of Women's Studies



Women's Studies Faculty & Friends take a private tour of the Frost Museum hosted by Museum Director Carol Damian.



Women's Studies Staff Christi Navarro, Leah Blumenfeld, and Paula Powell greet the gala attendees



WS Director Laurie Shrage and Friend of Women's Studies, Maria Roberts.



Associate Director Aurora Morcillo performs an impromptu guitar solo for the audience.



## *WOMEN'S STUDIES*

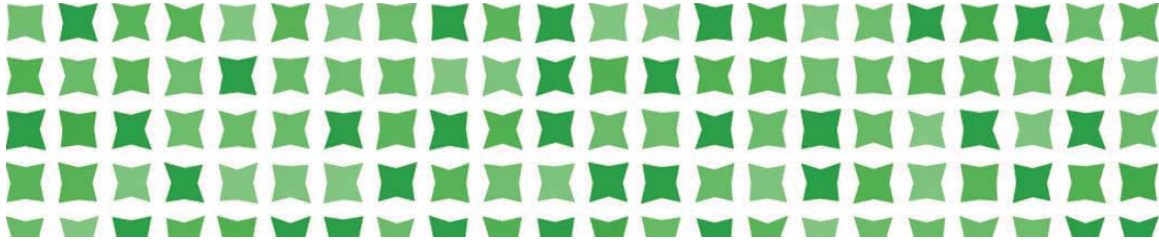
# INTERNATIONAL PROGRAMS



**By Aurora Morcillo**



Aurora Morcillo (FIU), Christi Navarro (FIU), and Angela Robledo (Universidad Nacional de Colombia)



## GENDER & WOMEN'S STUDIES ACROSS CULTURES INTERNATIONAL CONSORTIUM

**The** Women's Studies Center has a strong commitment to international education. In 2005 we launched the Gender and Women's Studies Across Cultures International Consortium which includes: Universidad de Granada, Spain; Sidi Mohamed Ben Abdellah University in Fez; Universidad Nacional de Colombia

and FIU. The second meeting of our consortium took place this year in Morocco.

Six FIU Women's Studies faculty members from the College of Arts & Sciences and one graduate student participated in a conference in Fez, Morocco on "Women, Culture, and Development," from July 9 to July 11. The participants were: Dr. Laurie

Shrage, Director of Women's Studies, Senior Associate Dean for Sciences Suzanna Rose, Professors Aurora Morcillo, Vrushali Patil, Maya Boutaghou, and Dawn Addy, and doctoral student Christi Navarro. The conference was hosted by Sidi Mohamed Ben Abdellah University (<http://www.usmba.ac.ma>) in Fez,

*(Continued on page 52)*



Gender & Women's Studies Across Cultures Consortium (from left to right): Dawn Addy, Vrushali Patil, Angela Robledo, Laurie Shrage, Fatima Sadiqi, Maya Boutaghou, Aurora Morcillo, Suoad Saloui, Christi Navarro, and Marga Birriel (sitting).



*(Continued from page 51)*

and included papers by scholars from a number of countries. Papers were presented in Arabic, French, Spanish, and English, and simultaneous translations were provided at all sessions. Faculty from many universities in Morocco attended the conference, along with pre-college

teachers, social workers, students, and public officials representing the national government, the city of Fez, and several universities.

While in Morocco, five Women's Studies faculty and the student representative also presented a panel on "Interdisciplinary & Transnational Women's Studies" at Al Akhawayn University (<http://www.aui.ma>) in

Ifrane to 75 students and faculty, and met with various administrators at the University on July 8, 2009.

The third meeting of Gender and Women's Studies Across Cultures International Consortium will be hosted by the Women's Studies center at FIU in 2010. Our center will be also launching a website for the consortium and a logo competition.

## RABAT

### Rue de Consuls, Rabat Medina



At the Masoleum for King Mohammed V in Rabat.



Aurora Morcillo with her sister, Emilia Morcillo Gómez.



Women's Studies Center on the roof of Restaurant Le Ziryab.





## IFRANE Al-Akhawayn University



Panel discussion on FIU Women's Studies faculty research at Al-Akhawayn University.



# FEZ

## Femme, Cultures, et Developpement: Perspective Méridionale



Student from University of Fez giving opening prayer.



Left to right: Aurora Morcillo, Suzanna Rose, Suoad Slaoui, Fatima Sadiqi, Laurie Shrage, & Dawn Addy

# Gemma

Joint European Master's Degree  
in Women's and Gender Studies



**In** addition to our Consortium, the Women's Studies center is part of the GEMMA Master's Degree in Women's and Gender Studies in the European Union. This is the first Erasmus Mundus Master in Women's and Gender Studies in Europe. GEMMA is an interdisciplinary program that provides high quality academic education and professional competencies for personnel working or intending to work in the areas of Women's Studies, Gender Studies and Equal Opportunities across Europe. There are eight universities in this European consortium:

- KOZEP-EUROPAI EGYETEM (CENTRAL EUROPEAN UNIVERSITY), Hungary
- UNIVERSITÀ DI BOLOGNA, Italy
- UNIVERSIDAD DE GRANADA, Spain
- UNIVERSIDAD DE OVIEDO, Spain
- UNIVERSITEIT UTRECHT, the Netherlands
- UNIWERSYTET ŁÓDZKI, Poland
- FAKULTETA ZA PODIPLOMSKE HUMANISTICNE STUDIJE - INSTITUTUM - STUDIORUM HUMANITATIS, Slovenia
- UNIVERSITY OF HULL, England

Last Spring (2008), the Women's Studies Center at Florida International University was invited to be part of the Action 3 GEMMA World and successfully joined four other institutions in this global dimension of GEMMA. English and Spanish are the two official languages of instruction of the Master's program.

#### Partners of the GEMMA Consortium in GEMMA World:

**Prof. Dra. Nora Domínguez**, Interdisciplinary Institute of Gender Studies, *University of Buenos Aires, Argentina.*

**Prof. Dra. Aurora Morcillo**, Women's Studies Center, *Florida International University, USA.*

**Prof. Dra. Norma Blazquez Graf**, Feminist Research Program, Center of Interdisciplinary Research on Sciences and Humanities, *National Autonomous University of Mexico (UNAM), Mexico.*

**Prof. Dra. Mary E. Hawkesworth**, Women's and Gender Studies Department, *Rutgers, The State University of New Jersey, USA.*

**Prof. Lucero Quiroga**, Center for Gender Studies, *Technological Institute of Santo Domingo, Dominican Republic.*





*From left to right: Agata Ignaciuk, Professor Aurora Morcillo, and Ana Frank.*

## **GEMMA World**

makes it possible for European students of the GEMMA program to visit non-European research and higher education institutions. The students receive a scholarship of 3,100 euros to spend a short research or study period (up to 3 months) in one of these prestigious third country institutions during the 4<sup>th</sup> semester of the program.

This summer we hosted two students at FIU: **Agata Ignaciuk**, from the Universidad de Granada, Spain has been working on a project entitled "Mujeres, feminismo y el control sobre la reproducción: los debates sobre la anticoncepción y aborto en Polonia e Italia" under the mentorship of professor Laurie Shrage.

**Ana Frank**, from Studiorum Humanitatis, in Slovenia, has been working on a project entitled "Stereotypes and Representations of Minority Women in America and Europe – a comparison" under the mentorship of professor Alexandra Cornelli-Diallo.





# WOMEN'S STUDIES CORE FACULTY



**Laurie Shrage**, Director, Women's Studies Center, and Professor Women's Studies, Philosophy

**Vrushali Patil**, Assistant Professor Women's Studies, Global & Sociocultural Studies

**Dawn E. Addy**, Director, Center for Labor Research & Studies, and Professor Education, Women's Studies

**Suzanna Rose**, Senior Associate Dean for the Sciences, College of Arts & Sciences, and Professor Psychology, Women's Studies

**Aurora Morcillo**, Associate Professor Women's Studies, History



## NEW FACULTY

### **Maya Boutaghou**

Assistant Professor Women's Studies, Modern Languages  
Dr. Boutaghou was hired as a result of the Women's Studies search in the Fall of 2008 and will begin teaching at FIU in 2010.

### **Faculty Search Committee**

Dr. Aurora Morcillo, Chair  
Dr. Ellen Cohn  
Dr. Maria Gomez  
Dr. Kathleen Martin  
Dr. Rebecca Salokar  
Dr. Laurie Shrage

## WOMEN'S STUDIES ELECTIONS & FACULTY COMMITTEES

### **FACULTY ADVISORY COMMITTEE:**

Alexandra Cornelius Diallo (History)  
Claudia Matus (Education)  
Whitney Bauman (Religious Studies)  
Lynn Barrett (BBC/Creative Writing)  
Meri-Jane Rochelson (BBC/English)  
Ana Maria Bidegain (Religious Studies)  
Aurora Morcillo (WST/History)  
Pascale Becel (Modern Languages)  
Tatiana Kostadinova (Political Science)

### **PERSONNEL COMMITTEE:**

Aurora Morcillo (History)  
Ophelia Weeks (Biology)  
Sarah Mahler (GSS)

### **CURRICULUM COMMITTEE:**

Vrushali Patil (WST/GSS)  
Dawn Addy (Labor Center)  
Lara Kriegel (History)

### **NOMINATING COMMITTEE:**

Vrushali Patil (WST/GSS)  
Cristina Eguizabal (LACC)  
Rebecca Salokar (Political Science)

## WOMEN'S STUDIES AFFILIATED FACULTY

<b>Irma de Alonso</b> , Professor, Economics	<b>Kathleen Martín</b> , Associate Professor, Global & Sociocultural Studies
<b>Clair Apodaca</b> , Associate Professor, International Relations	<b>Jennifer Matey</b> , Assistant Professor, Philosophy
<b>Maria Aysa</b> , Assistant Professor, Global & Sociocultural Studies	<b>Claudia Matus</b> , Assistant Professor, Higher Education
<b>Joan Baker</b> , Associate Professor, English	<b>Kathleen McCormack</b> , Professor, English
<b>Ginette Ba-Curry</b> , Adjunct Professor, English	<b>Marilyn Montgomery</b> , Associate Professor, Psychology
<b>Lynne Barrett</b> , Professor, English	<b>Aisha Musa</b> , Assistant Professor, Religious Studies
<b>Whitney Bauman</b> , Assistant Professor, Religious Studies	<b>Glenda Musoba</b> , Assistant Professor, Education
<b>Pascale Becel</b> , Associate Professor & Chair, Modern Languages	<b>Juan Odio</b> , Criminal Justice
<b>Michelle Beer</b> , Associate Professor, Philosophy	<b>Suzanne Onorato</b> , Director, Women's Center
<b>Ana Maria Bidegain</b> , Associate Professor, Religious Studies	<b>Victoria Owles</b> , Associate Director & Instructor, Campus Life and Women's Studies
<b>Kristine Burns</b> , Associate Professor, Music	<b>Anna Pasztor</b> , Professor, Computer Science
<b>Cynthia Chinelly</b> , Lecturer, English	<b>Joseph Patrouch</b> , Associate Professor, History
<b>Cyra Akila Choudhury</b> , Assistant Professor, College of Law	<b>Valerie Patterson</b> , Associate Professor, Public Administration
<b>Ellen Cohn</b> , Associate Professor, Criminal Justice	<b>Linnea Pearson</b> , Adjunct Professor, Religious Studies
<b>Alexandra Diallo</b> , Assistant Professor, History and African & African Diaspora Studies	<b>Joyce Peterson</b> , Associate Dean, Arts & Sciences
<b>Carol Damian</b> , Professor and Director, Art & Art History and the Frost Museum	<b>Mary Lou Pfeiffer</b> , Instructor, Honors College
<b>Denise Duhamel</b> , Associate Professor, English	<b>Sarah Poggione</b> , Assistant Professor, Political Science
<b>Joyce Elam</b> , Professor & Executive Dean, College of Business	<b>Bianca Premo</b> , Associate Professor, History
<b>Cristina Eguizabal</b> , Director, Latin American & Caribbean Center	<b>Patricia Price</b> , Associate Professor, International Relations
<b>Juliet Erazo</b> , Assistant Professor, Global & Sociocultural Studies	<b>Ana Roca</b> , Professor, Modern Languages
<b>Rebecca Friedman</b> , Associate Professor, History & Humanities	<b>Meri-Jane Rochelson</b> , Professor, English
<b>Jose Gabilondo</b> , Associate Professor, College of Law	<b>Heather Russell</b> , Associate Professor, English
<b>Hugh Gladwin</b> , Associate Professor, Global & Sociocultural Studies	<b>Juan Saiz</b> , Visiting Instructor, Criminal Justice
<b>María Asunción Gómez</b> , Associate Professor, Modern Languages	<b>Rebecca Salokar</b> , Associate Professor, Political Science
<b>Christine Gudorf</b> , Professor, Religious Studies	<b>Renee Silverman</b> , Assistant Professor, Modern Languages
<b>Aya Gruber</b> , Assistant Professor, College of Law	<b>Dionne Stephens</b> , Assistant Professor, Psychology and Africa & African Diaspora Studies
<b>Kimberly Harrison</b> , Associate Professor, English	<b>Judith Stiehm</b> , Professor, Political Science
<b>Marilyn Hoder-Salmon</b> , Associate Professor & Founding WS Director, English	<b>John Stuart</b> , Professor, Architecture
<b>Gail Hollander</b> , Associate Professor, Global & Sociocultural Studies	<b>James Sutton</b> , Associate Professor, English
<b>Tometro Hopkins</b> , Associate Professor, English	<b>Paige Telan</b> , Adjunct Professor, Psychology
<b>Sherry Johnson</b> , Associate Professor, History	<b>Juan Torres-Pou</b> , Associate Professor, Modern Languages
<b>Tara Kai</b> , Adjunct Professor, English	<b>Nan Van Den Bergh</b> , Associate Professor, Social Work
<b>Jack Kleban</b> , Adjunct Management, International Business	<b>Gisela Vega</b> , Associate Director, Housing & Residential Life
<b>Suzanne Koptur</b> , Professor, Biological Sciences	<b>Chantelle Verna</b> , Assistant Professor History, International Relations
<b>Tatiana Kostadinova</b> , Assistant Professor, Political Science	<b>Mercedes Vigon</b> , Associate Director, International Media Center, Journalism
<b>Lara Kriegel</b> , Associate Professor, History	<b>Charlyne Walker</b> , Director, Educational Research & Evaluation, College of Arts & Sciences
<b>Abe Lavender</b> , Professor, Global & Sociocultural Studies	<b>Ophelia Weeks</b> , Associate Professor, Biological Sciences
<b>Mary Levitt</b> , Professor, Psychology	<b>Donna Weir-Soley</b> , Associate Professor, English
<b>Felice Lifshitz</b> , Professor, History	<b>Barbara Weitz</b> , Instructor, English
<b>María del Mar Logroño</b> , Assistant Professor, History, Middle East Studies Center (MESC)	<b>Lois West</b> , Associate Professor, Global & Sociocultural Studies
<b>Oscar Loynaz</b> , Interim Director, University Health Services	<b>Kirsten Wood</b> , Associate, Professor History
<b>Ana Luszczyńska</b> , Assistant Professor, English	
<b>Sarah Mahler</b> , Associate Professor, Global & Sociocultural Studies	
<b>Peggy Maisel</b> , Associate Professor, College of Law	

# WOMEN'S STUDIES COURSE SUMMARY

## Latin American Feminist Filmmaking

Dr. David William Foster, Visiting Professor

Spring 2009

The course provides a basic knowledge of principal contemporary examples of feminist filmmaking in Latin America in English. The critical presentation of the films viewed involves an ideological interpretation of the film text, informed specifically by concepts drawn from American and Latin American feminism, including lesbian theorizing about the film as a viable cultural product for the presentation of women's homoerotic issues. The course focuses on subaltern women's groups like nuns, immigrants, prostitutes, proletariat, single mothers, indigenous groups, political prisoners, and the poor. Films to be viewed may include: *Frida* (México), *Xica* (Brasil), *Mecánica celestial* (Venezuelan), *Hasta cierto punto* (Cuba), *La extranjera* (Argentina), *Yo la peor de todas* (Argentina), *De noche vienes*, *Esmeralda* (México), *Que bom te ver viva* (Brazil), *Mujer transparente* (Cuba), *La ciénaga* (Argentina), *De eso no se habla* (Argentina), *Madeinusa* (Peru), *Brincando el charco* (Neo-Rican), *Real Women Have Curves* (Chicana), *A hora da estrela* (Brazilian).

## NEW COURSES

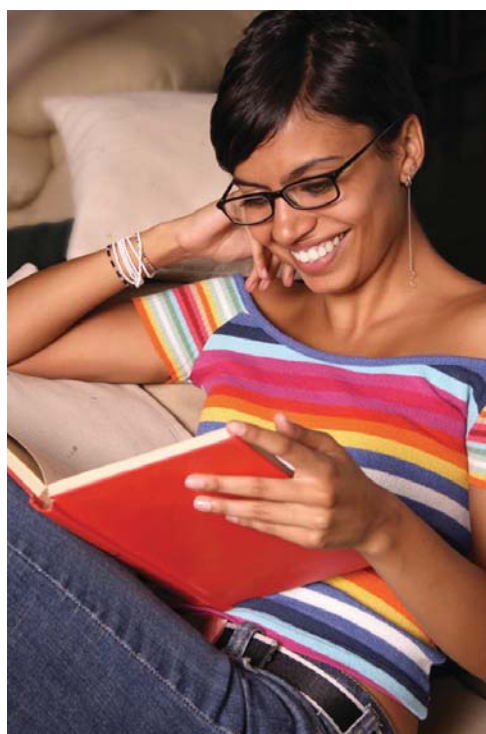
## Race, Gender, Science, & the African-American Experience

Dr. Alexandra Cornelius-Diallo

Spring 2009 - BBC

This course introduces students to the scientific and social constructions of race and gender. Students will explore the ways in which science, race, and gender intersect by learning about the history of the eugenics movement, reproductive and contraceptive technologies, environmental racism, and the case study of the Tuskegee Syphilis experiment. By the end of the course, students will gain knowledge about the ways in which discourses in anthropology, biology, and history have shaped our contemporary understanding of race and racial identity.

This course will consider the ways in which ideas about race and gender, and scientific practices have shaped American and, more specifically, African American men and women's racial identity and well-being. The course will begin with an examination of race as it has been scientifically and socially constructed. Topics will include: the history of racial classification; the construction of racial identities; the social construction of gendered differences; the eugenics movement; reproductive and contraceptive technologies and race; the Tuskegee Syphilis experiment; technology, culture, and black community development; environmental racism; science, stereotypes about black physicality and the world of the black athlete; The Human Genome project; and health, healing, and medicine in African American communities. In addition, the course will examine these issues as they inform and have been informed by transnational social, economic, and cultural forces. While we will consider the ways in which science has been misused, the purpose of the course is not to vilify science. Instead we will end the course with a consideration of the possible ways in which practitioners may use medical and scientific knowledge as a liberatory tool.







# ENROLLMENT SUMMARY

(Summer 2008 - Summer 2009)

A total of 4,505 students were enrolled in the 133 undergraduate and 21 graduate level courses offered by the Women's Studies Center for Summer 2008 and the Academic Year 2008-2009 (Fall 2008 – Summer 2009). There were 48 students majoring in Women's Studies and 43 students pursuing a certificate. By June 2009, 20 students earned a B.A. in Women's Studies and 13 students earned a Women's Studies certificate.

ACADEMIC YEAR 2008-2009 SUMMARY (Including Summer 2008)				
	Number of Courses			Enrollment
	Regular	Online	Off Campus	
<b>SUMMER 2008 Summary</b>				
Undergraduate	14	10	1	797
Graduate	1	0	0	14
<b>Summer 2008 Total</b>	<b>15</b>	<b>10</b>	<b>1</b>	<b>911</b>
<b>FALL 2008 Summary</b>				
Undergraduate	25	11	0	1453
Graduate	9	0	0	73
<b>FALL 2008 Total</b>	<b>34</b>	<b>11</b>	<b>0</b>	<b>1526</b>
<b>SPRING 2009 Summary</b>				
Undergraduate	26	11	0	1541
Graduate	8	0	0	60
<b>SPRING 2009 Total</b>	<b>34</b>	<b>11</b>	<b>0</b>	<b>1601</b>
<b>SUMMER 2009 Summary</b>				
Undergraduate	10	9	1	458
Graduate	2	1	0	6
<b>Summer 2009 Total</b>	<b>12</b>	<b>10</b>	<b>1</b>	<b>464</b>
<b>GRAND TOTAL</b>	<b>110</b>	<b>42</b>	<b>2</b>	<b>4505</b>



# SUMMER 2008

COURSE #	COURSE NAME	INSTRUCTOR	ENROLLMENT	
Summer 2008 University Park Campus - Undergraduate				
WST 3015/IDS 4920	Introduction to Women’s Studies	Kreigel	16/20	
WST 3641	Gay/Lesbian in the U.S.	Vega	27	
WST 3641	Gay/Lesbian in the U.S.	Loynaz	18	
WST 4504	Feminist Theory	West	11	
WST 4930/SYP 3300	Social Movements, Gender, & Justice	Thompson	6/15	
WST 4940	Women’s Studies Internship	Morcillo	2	
ANT 3302	Anthropology of Gender	Martin	50	
SYG 4060	Sociology of Sexuality	West	35	
SPW 4930	Representation of Women in Spanish Lit & Film	Gomez	25	
Summer 2008 University Park Campus - Graduate				
SPW 5781	Representation of Women in Spanish Lit & Film	Gomez	14	
Summer 2008 Biscayne Bay Campus - Undergraduate				
WST 3015/HUM 3325	Introduction to Women’s Studies	Friedman	11/11	
AML 4503	Harlem Renaissance	Weir	26	
CCJ 4663	Women, Crime, & the Criminal Justice System	Vincent	31	
MAN 4102	Managing Diversity	Kleban	40	
SOP 3472	Psychology of Women	Telan	34	
Summer 2008 Online Courses - Undergraduate				
ECP 3254	Women, Men, & Work in the USA	Alonso	47	
ECS 3021	Women, Culture, & Economic Development	Alonso	37	
REL 3145	Women & Religion	Gudorf	30	
REL 3162	Healers & Mediums – Summer A	Pfeiffer	24	
REL 3162	Healers & Mediums – Summer B	Pfeiffer	34	
REL 3171	Sex & Religion – Summer A	Gudorf	18	
REL 3171	Sex & Religion – Summer B	Gudorf	37	
REL 3520	Saints, Witches, & Cathedrals	Gudorf	18	
Summer 2008 Summary		Number of Courses		Enrollment
	Regular	Online	Off Campus	
Undergraduate	14	10	1	797
Graduate	1	0	0	14
Summer 2008 Total	15	10	1	911





COURSE #	COURSE NAME	INSTRUCTOR	ENROLLMENT
<b>FALL 2008 University Park Campus - Undergraduate</b>			
WST 3015	Introduction to Women's Studies	Patil	34
WST 3641	Gay/Lesbian in the U.S.	Loynaz	35
WST 4930/EUH 4286	Gendered History of the Body	Morcillo	17/19
WST 4930/IDS 4920	Women in Technology	Walker	7/39
AML 4606	19C African American Literature	Russell	50
AML 4624	African American Women Writers	Russell	48
HIS 4935	Women & Gender	Logrono	19
LBS 4154	Women & Work	Addy	1
LIT 4930	Renaissance Gender & Sexuality	Strycharski	47
MAN 4102	Managing Diversity	Osborne	63
PHM 4123	Philosophy & Feminism	Beer	34
REL 4364	Quran, Gender, & Jihad	Musa	11
REL 4361	Women in Islam	Musa	33
SYD 3804	Sociology of Gender	West	70
SYG 4060	Sociology of Sexuality	West	96
<b>FALL 2008 University Park Campus - Graduate</b>			
WST 5935/EUH 5935	Gendered History of the Body	Morcillo	5/4
ANG 6473	Diasporas, Migration, & Globalization	Patil	19
EUH 6932	History of Childhood & Youth	Friedman	14
INR 5088	Feminism & International Relations	Prugl	5
LBS 5155	Women in the US Workplace	Addy	3
REL 5365	Adv. Quran, Gender, & Jihad	Musa	4
SPW 5486	Modern Spanish Women Writers	Gomez	13
<b>FALL 2008 Biscayne Bay Campus - Undergraduate</b>			
WST 3641	Gay/Lesbian in the U.S.	Owles	26
AML 4571	African American History 17-19C	Cornelius-Diallo	9
AML 4624	African American Women Writers	Weir-Soley	33
ENL 4254	Late Victorian Fiction	Rochelson	19
ENL 4260	Women Writers	McCormack	21
LIT 4931	Multicultural Working Class Women	Weir-Soley	19
REL 3171	Sex & Religion	Livini	27
SOP 3742	Psychology of Women	Stephens	71
<b>FALL 2008 Biscayne Bay Campus - Graduate</b>			
AMH 5935	African American History 17-19C	Cornelius-Diallo	1
ENL 5505	Late Victorian Literature	Rochelson	5





## FALL 2008 (continued)

<b>FALL 2008 Online Courses - Undergraduate</b>				
WST 3015	Introduction to Women's Studies	Kai		35
MAN 4102	Managing Diversity	Kleban		70
REL 3145	Women & Religion	Gudorf		34
REL 3162	Healers & Mediums	Pfeiffer		50
REL 3171	Sex & Religion	Gudorf		37
SOP 3742	Psychology of Women	Stephens		67
SOP 4774	Female Sexuality	Rose		44
SPC 3711	Gender & Communication	Brown		72
SYG 4060	Sociology of Sexuality	Lavender		126
<b>FALL 2008 Summary</b>		<b>Number of Courses</b>		<b>Enrollment</b>
		Regular	Online	Off Campus
	<b>Undergraduate</b>	25	11	0
	<b>Graduate</b>	9	0	0
	<b>FALL 2008 Total</b>	34	11	0

 <h1>SPRING 2009</h1> 			
<b>COURSE #</b>	<b>COURSE NAME</b>	<b>INSTRUCTOR</b>	<b>ENROLLMENT</b>
<b>SPRING 2009 University Park Campus - Undergraduate</b>			
WST 3015	Introduction to Women's Studies	Patil	35
WST 3015	Introduction to Women's Studies	Blumenfeld	37
WST 3641	Gay/Lesbian in the U.S.	Loynaz	36
WST 4930/PHM 4360	Feminist Theory: Women, Health, Social Movt	Shrage	14/15
WST 4930/SPW 4590	Latin American Feminist Films & Theory	Foster	4/2
WST 4930/IDS 4920	Gender, Identity, & Technology	Walker	2/47
WST 4931	Women & Leadership	Onorato	12
AML 4607	20C African American Literature	Russell	32
AML 4930	Latino/Latina Literature	Luszczynska	44
ENL 4212	Medieval Women's Literature	Baker	50
EUH 4610	Women & Gender in Europe	Kriegel	43
LIT 4192	Major Caribbean Writers: African-Caribbean	Russell	24
LIT 4931	Women's Prose & Film: Narratives of War	Hoder-Salmon	40
MAN 4102	Managing Diversity	Osborne	59
REL 3145	Women & Religion	Rowan	51
REL 4937	Women & the Early Church	McDaniels	15
SYD 3811	Sociology of Women	West	44
SYG 4820	Sociology of Men	West	28

## SPRING 2009 (continued)

SPRING 2009 University Park Campus - Graduate					
WST 5507	Feminist Theory: Women, Health & Social Mvt	Shrage		5	
WST 5936	Women & Leadership	Onorato		4	
WST 5946	Women’s Studies Internship	Shrage		1	
EUH 5935	Women & Gender in Europe	Kriegel		1	
EUH 6933	History of Childhood & Youth	Friedman		13	
FIL 5846	Latin American Feminist Films & Theory	Foster		6	
LBS 5155	Workplace Diversity	Addy		4	
PAD 5435	Administration & the Role of Women	Patterson		26	
SPRING 2009 Biscayne Bay Campus - Undergraduate					
WST 3641	Gay/Lesbian in the U.S.	Owles		24	
AML 4503	Harlem Renaissance	Weir		25	
ENL4251	Victorian Literature	Rochelson		18	
LIT 3674	Literature of the Jewish Immigration Experience	Rochelson		20	
REL 3171	Sex & Religion	Livini		43	
SOP 3742	Psychology of Women	Telan		84	
SYD 4820	Sociology of Men	Lavender		22	
SPRING 2009 Pines Center - Undergraduate					
SOP 3742	Psychology of Women	Bennett-Marley		49	
SPRING 2009 Online Courses - Undergraduate					
WST 3015	Introduction to Women’s Studies	Kai		33	
ECP 3254	Women, Men, & Work in the USA	Alonso		35	
ECS 3021	Women, Culture, & Economic Development	Alonso		34	
MAN 4102	Managing Diversity	Kleban		45	
REL 3145	Women & Religion	Gudorf		32	
REL 3162	Healers & Mediums	Pfeiffer		43	
REL 3171	Sex & Religion	Gudorf		68	
REL 352	Saints, Witches, & Cathedrals	Gudorf		28	
SOP 3742	Psychology of Women	Stephens		89	
SYD 3804	Sociology of Gender	West		88	
SYG 4060	Sociology of Sexuality	Lavender		127	
SPRING 2009 Summary		Number of Courses			Enrollment
		Regular	Online	Off Campus	
Undergraduate		26	11	0	1541
Graduate		8	0	0	60
SPRING 2009 Total		34	11	0	1601

		<h1>SUMMER 2009</h1>			
COURSE #		COURSE NAME		INSTRUCTOR	ENROLLMENT
Summer 2009 University Park Campus - Undergraduate					
WST 3015		Introduction to Women’s Studies – Summer A		Blumenfeld	21
WST 3015/IDS 4920		Introduction to Women’s Studies – Summer B		Kreigel	9/29
WST 3641		Gay/Lesbian in the U.S.		Loynaz	34
WST 4905		Women’s Studies Independent Study – Summer A		Shrage	1
WST 4905		Women’s Studies Independent Study – Summer C		Shrage	1
WST 4940		Women’s Studies Internship		Shrage	5
REL 3145		Women & Religion		Rowan	28
SYD 3804		Sociology of Gender		Martin	46
SYG 4060		Sociology of Sexuality		Javadzadeh	33
Summer 2009 University Park Campus - Graduate					
WST 5905		Women’s Studies Independent Study – Summer A		Shrage	1
WST 5905		Women’s Studies Independent Study – Summer B		Shrage	2
Summer 2009 Biscayne Bay Campus - Undergraduate					
SOP 3472		Psychology of Women		Telan	73
Summer 2009 Online Courses - Undergraduate					
AML 4503		Periods in American Literature		Weir	50
ECP 3254		Women, Men, & Work in the USA		Alonso	33
ECS 3021		Women, Culture, & Economic Development		Alonso	35
MAN 4102		Managing Diversity		Kleban	56
REL 3145		Women & Religion		Maarif	27
REL 3162		Healers & Mediums		Pfeiffer	34
REL 3171		Sex & Religion		Maarif	44
SOP 3742		Psychology of Women		Stephens	81
SYG 4060		Sociology of Sexuality		Lavender	104
Summer 2009 Online Courses - Graduate					
PSY 5939		Psychology of Women		Stephens	3
Summer 2009 Off Campus - Undergraduate					
LIT 4382		Women in Eastern Europe		Weitz	4
Summer 2009 Summary		Number of Courses			Enrollment
		Regular	Online	Off Campus	
Undergraduate		10	9	1	458
Graduate		2	1	0	6
Summer 2009 Total		12	10	1	464







2008-2009

# Women's Studies







FIU Women's Studies  
in Morocco, *page 51*